



Follow our daily news feed at www.digitalyacht.net

NavLink

New Charting app for iPad

Use your iPhone or iPad to explore, plan and navigate your boating trips in real time and in high resolution using the latest digital vector marine charts. Compatible with Digital Yacht NMEA to Wireless products for an integrated and supported solution. Charting available for UK and US. European coverage available soon as an in app purchase. See inside for more information.



DIGITAL UPDATE MARCH 2014

In this issue

Digital Yacht showroom display at Dekker Watersport
GPS150USB DualNav positioning sensor
WL60 WiFi antenna
NavLink Apple app
MUX 100 NMEA data combiner



DIGITAL YACHT BUILD NEW CUSTOMER EXPERIENCE AT DEKKER WATERSPORT'S AMSTERDAM SUPERSTORE

Digital Yacht have built a new display of their latest marine electronic products at Dekker's Amsterdam superstore. This joint venture "shop within a shop" opened this month to coincide with the Netherlands' HISWA boat show and Dekker's special customer weekend event.

Originally established as a sail maker over 130 years ago, Dekker Watersport is Holland's leading marine super-store with a 1000 square metre display area. Digital Yacht is best known for its award winning AIS and wireless navigation products and the new displays will show live views of AIS as well as show-casing all the company's latest products.

"Digital Yacht is determined to support the best customer experience with expert advisors, interactive displays and local presence. This is the first of a series of global displays that we will implement with our best partners" commented Nick Heyes, CEO of Digital Yacht.

Dekker's showroom is located in Zandaam and the business is headed up by brothers Marc and Sander Prins. The store is located close to Amsterdam's Schiphol airport. Last year more than 50m passengers transited through Schiphol, Europe's 4th biggest airport. The hope is that many overseas customers will also find time to visit the store which is easily accessible by train and road in just minutes from the airport. In 2015, a new Ikea Superstore will also be built adjacent to the Dekker facility.



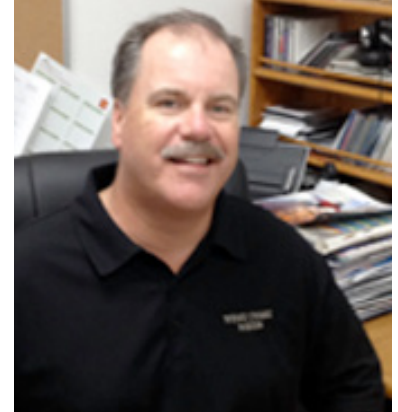
DIGITAL YACHT ADDS TEAM OF 6 TO US SALES

Digital Yacht have appointed San Diego based West Coast Sales to represent their product line across the West Coast of America with effect from 1st February 2014. Their team of 6 people will be actively involved in product marketing, support and training to an important group of specialist electronic dealers and distributors.

West Coast Sales will also provide a new innovative sales management role for the existing East Coast representatives so that there is a coherent and structured team of 9 people across the US.

"Having a national and consistent approach to this very important market is essential for the fast growing Digital Yacht brand and West Coast Sales have clearly been very successful with their management of other symbiotic product lines such as Fusion. We've a rapidly evolving range of OEM products coming on stream for 2014 and look forward to promoting these to US boat builders" commented Nick Heyes, CEO of Digital Yacht.

West Coast Sales is headed up by Jay Sanders and Todd Crocker who have been instrumental in building up many US marine brands over their careers.



FEATURED NEW PRODUCTS

GPS150USB DUALNAV POSITIONING SENSOR



The GPS150USB is a high definition GPS & GLONASS positioning sensor utilising Digital Yacht's proprietary DualNav technology for PC and MAC based navigation users. Self powered from the USB port, it's ideal for charter skippers and PC based navigators. With DualNav technology, you'll get sub 1m precision and 10Hz updates too.

WL60 WI-FI BOOSTER

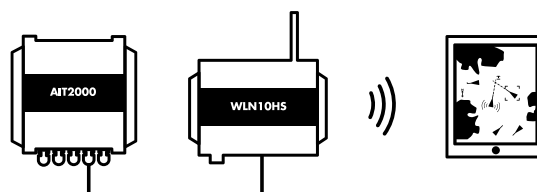


Just missing that network connection – the WL60 has a 300mW modem and 8dBi antenna which allows connection in those remote spots. It can support ranges up to 750m. Ships with easy USB connection cable suitable for MAC or PC and sucker cup mounting solution. Available now with great pricing. Get your boat online today!

NAVLINK



NavLink supports all our NMEA to wireless servers such as the WLN10. Data from the boat's NMEA system can be sent wirelessly to the iPhone or iPad for complete integration. With the NavLink app, Digital Yacht now offer a complete supported solution to iPad enable your navigation!



Typical system
iPad with NavLink app running



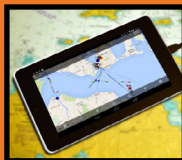
WHAT ELSE IS GOING ON?

Here's a selection of news from our daily blog.

Click on the title to link to the story.

Connecting an AIS Receiver to an Android Tablet with Boat Beacon

we finished a series of successful tests, connecting our AIS receivers to a Google Nexus 7 Android tablet. This was made possible by a new version of Boat Beacon the popular AIS App for Apple and Android devices, which should soon be available (as a free update) on the Apple Store and Google Play Store.



Video showing how to get Internet in a Caravan

A version of our popular WL60 long range Wi-Fi adaptor is also sold by our UK distributor C.A. Clase to caravan and motorhome owners. With its easy to mount suction cups, 5m USB cable and relatively small dimensions/weight it is a great tool for getting a long range Wi-Fi connection, either in a caravan site or a marina.



Replacing a defective GPS antenna

Unfortunately, for boat owners the "Joys of Spring" are often tempered with discoveries of equipment failure as you power up your electronics for the first time, after a winter layup. It is usually the sensors and aerials that suffer the most, as they are permanently located outside in a very hostile environment.



New UK Quick Guide Catalogue Available

Our new short form 8 page catalogue is now available to download from here UK 2014 Short Guide. It's a great overview of Digital Yacht products and features at a glance. Please note all prices are UK list in GBP, excluding VAT. Euro and US\$ versions are also available.



MUX100 NMEA Data Combiner – Sorts Monday Morning Interfacing issues!

The MUX100 NMEA multiplexer is a two channel NMEA 0183 data combiner capable of resolving most NMEA interfacing issues. It has two NMEA inputs for 4800 and 38400 baud connectivity and dual outputs.



WL510 WIFI DEALER HOTSPOT – Offer your customers wireless internet access

Our high power WL510 WiFi System has proved popular for internet access whilst afloat so we've produced a variant which allows a shore side installation to act as a hotspot for local users. Many marinas already have a wifi subscription service but this can often be expensive or unreliable.

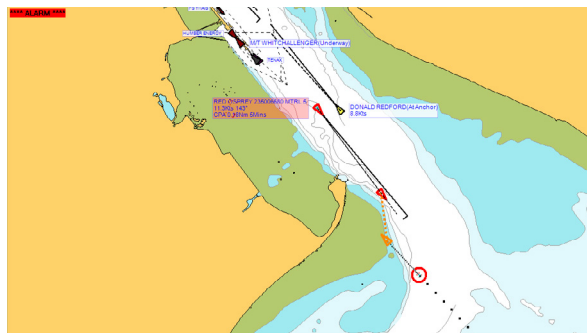


SIGN UP FOR OUR NEWS FEED

www.digitalyacht.net

INTRODUCTION TO AIS A DIGITAL YACHT WHITE PAPER

Although AIS has now been in use around the world for over 10 years, it is surprisingly difficult for anyone interested in AIS to piece together information about this important technology. Wikipedia has a pretty good article on AIS, but we felt it would be useful to take some of the training material we have used over the last few years and publish a White Paper on this interesting subject. If you are thinking about purchasing an AIS or are simply wanting to learn more about what AIS is and why it is an important aid to safe navigation, please click [here](#) to download a free copy of our Introduction to AIS White Paper or visit http://www.digitalyacht.co.uk/files/Intro_to_AIS_White_Paper_V1_01.pdf



MUX100 – A REALLY SIMPLE YET EFFECTIVE NMEA 0183 DATA MULTIPLEXER

With modern AIS receivers and transponders outputting high speed NMEA0183 data at 38400 baud, it is often difficult to connect AIS data and low speed GPS or instrument data at 4800 baud to some chart plotters and/or PCs that have just one NMEA 0183 input. With the MUX100, all data received on the two input ports is multiplexed and transmitted on output 1 at 38400 baud. It is pre-configured so that Input 1 accepts AIS data at 38400 baud and input 2 accepts GPS/instrument data at 4800 baud. Often low speed GPS data is required to give position information to a DSC VHF, but when an AIS transponder is fitted the GPS data is often only available at 38400 baud which will be ignored by the VHF. The MUX100 intelligently takes the GPS data from the AIS present on input 1 and re-transmits this on output 2 at 4800 baud – which can then be connected to the VHF. As a safety feature, should GPS data on input 1 be invalid or lost, the MUX100 will automatically switch to the GPS data on input 2 and transmit this on output 1 and output 2. To avoid duplicated data confusing other equipment, the MUX100 automatically blocks duplicated data on port 2.



The MUX100 multiplexer combines two channels of NMEA 0183 data and makes NMEA 0183 system integration and interfacing easy

