

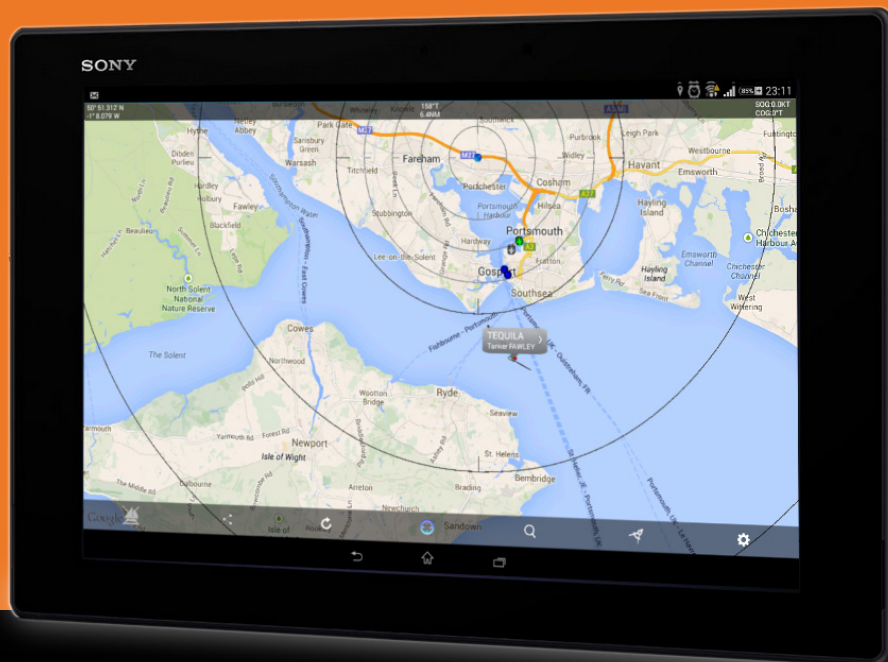


Follow our daily news feed at www.digitalyacht.net

AISVIEW

Android AIS navigation app

With over 1m Android devices activated daily, it's the world's leading mobile platform but, up until now, supported remarkably few marine navigation apps. Digital Yacht have just changed that with the introduction of AISView – an AIS viewing application for Android tablets and phones compatible with our NMEA to wireless servers, AIS USB products and NMEA-USB adaptor. Read about it inside...



DIGITAL UPDATE

JULY 2014

In this issue

AISView – Android AIS navigation app

Adapt PCs get a high voltage upgrade

USB-NMEA Adaptor – Not just for PC and MAC but Android too

NavLink MAC – Our new MacBook US charting package



AISVIEW AIS NAVIGATION APP

KEY FEATURES

- AIS viewing app for Android phones and tablets
- Available to purchase in the Google Play store
- Radar like display of AIS targets with range rings and chart grid
- Background Google mapping if available
- Supports TCP/UDP wireless connection (compatible with WLN10, NavLink and iAIS)
- Also supports USB connection with driver support for USB-NMEA adaptor
- A-B chart ruler
- Alarms for CPA and TCPA

SPECIFICATIONS

AISView is the ideal App for anyone wanting to display “live” AIS data from their boat’s AIS receiver or transponder on their Android tablet or smart phone. AISView is designed to receive and display wireless NMEA data from any of Digital Yacht’s NMEA to Wifi devices like the WLN10, NavLink, iNavHub or iAIS.

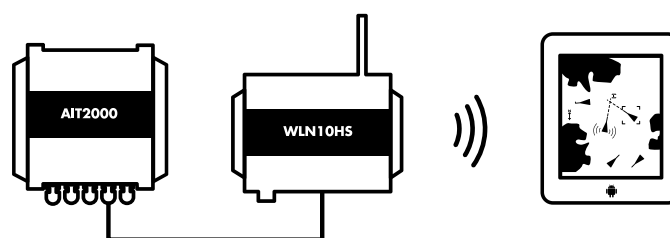
Although a “wire free” connection is the easiest way to get data in to the tablet, if you do not have one of our wireless NMEA products, you can also connect using Digital Yacht’s USB-NMEA adaptor. Connect this cable to the NMEA0183 output of your AIS and plug the USB connector in to a suitable USB OTG cable for your tablet and you have a simple and cost effective method of getting AIS data in to the tablet

Even if you have a full featured AIS display on your main plotter, having an extra display on a tablet is useful as a repeater or 2nd display. Utilising the internal GPS of the Android tablet, you will also have a completely separate backup system, which should your main plotter fail, will display your position, all of the AIS targets around you and also provide anti-collision alarms with CPA and TCPA calculations.

Once installed, you’ll see an overlay of AIS target information onto a background Google map. Tap on a target and you’ll get a drop down list with identity, heading and closest point of approach (CPA) information. A heading

vector makes it easy to see potential collision course targets. Google maps can now be cached if you don’t have an internet connection but even if this feature is not used, AISView will present an attractive radar like visualisation with range rings overlaying the targets around your vessel.

AISView also supports a simple bearing and distance ruler, compass heading display and current position and track history from the device’s built in GPS. Alarms can be configured for closest point of approach and AIS SARTs – useful for MOB applications. If you have a live internet connection, you can also supplement the real time overlay with AIS information obtained from the popular BoatBeacon internet AIS app (if this is installed) allowing you to view AIS targets in remote ports or locations.

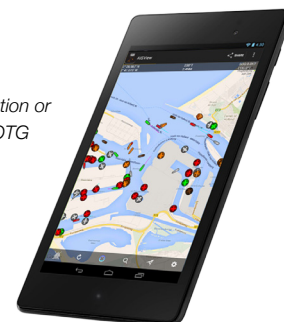


Typical system

Android tablet with AISView connected to boats NMEA system via WLN10

REQUIREMENTS

Android Smartphone or Tablet with GPS.
A wireless NMEA (TCP or UDP) AIS data connection or a compatible USB to NMEA adaptor cable and OTG USB Cable.



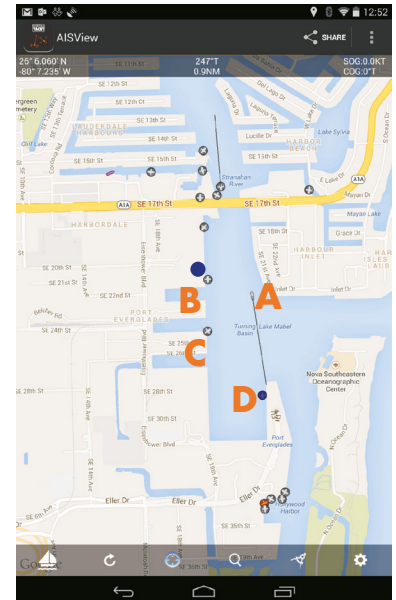
AISVIEW ANDROID APP VISUALISATION



- Current location
- A** Target A – Moving with heading line showing direction of travel
Click on target for drill down information.
- BCD** Targets B, C & D – static targets with colour code identifying target type.

Note: AISView can be configured for North up presentation (as here) or head up utilising the internal compass sensor on the Android device. It also features track logging, A-B chart ruler and chart grid and range ring options.

AISView	
MMSI	538080045
Status	Under way using engine
CPA	N/A
Distance	0.7NM at 147°T
Last Location	26° 5.614' N - 80° 6.979' W
Speed	5.5KT
Course	130°T
ETA	Unknown
Last Update	1m 5s
Length	0m
Width	0m
Draught	0.0m



ADAPT PC FOR 24V SYSTEMS

Our compact Adapt PCs are suitable for use on systems from 8-19v DC and tolerate the demanding requirements of direct connection to a boat's DC battery. We're increasingly seeing these used on superyachts, commercial ships and work boats which may have a 24V primary supply so we have produced a new 24V converter for the Adapt PC range. Its super compact, reliable and efficient and can easily be added to any Adapt installation. Price is £50/EUR65/US\$85

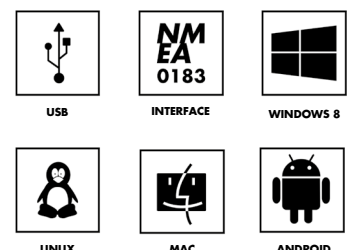


FEATURED PRODUCT

USB TO NMEA ADAPTOR



Our USB-NMEA adaptor has been popular for a while – allowing NMEA 0183 devices to connect to a PC or MAC for use with navigation programs. The latest Android tablets now support a USB connection with a USB-OTG adaptor cable which connects a regular Type A USB plug to the smaller mini USB type used on the tablet. The good news is our new AISView app supports this USB connection so our USB AIS products can be directly connected or this simple USB-NMEA adaptor can be used to connect to 3rd party NMEA based systems. Priced at just £35/\$59.95 is a perfect solution for PC, MAC and now Android



KEEP UP TO DATE WITH THE LATEST DEVELOPMENTS

Here's a selection of news from our daily blog.

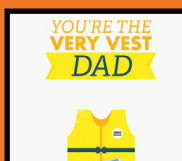
AISView Android App launches on the PlayStore

With over 1m Android devices activated daily, it's the world's leading mobile platform but, up until now, supported remarkably few marine navigation apps. Digital Yacht have just changed that with the introduction of AISView – an AIS viewing application for Android tablets and phones.



Father's Day – This Weekend

All GREAT Dad's love boats so don't get them socks or a tie for Father's Day, get them a top Dad gift – NavLink for their iPad. NavLink is a full featured charting and navigation app for the iPhone or iPad that turns the device into a full featured marine navigation device.



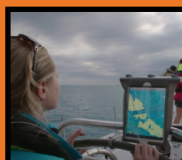
New Digital Yacht Website

Our old <http://www.digitalyacht.co.uk> website has had a long and hard life and recently we have been attacked by a series of hacks targeting older OSCommerce based websites. Some of you may have noticed the website being unavailable (offline) and this is becoming increasingly frequent, to the point where we are going to pull the plug on the old website within the next two weeks.



iNavX featured in Apple Developers presentation

Tuning in to the live stream from yesterday's Apple Developers Conference (WWDC), we were pleasantly surprised to see iNavX being used on a yacht in one of the presentation videos. It is not often that marine products are part of such a high profile event and it was great to see an app that we know so well, get worldwide visibility in the Apple video.



Using Navionics+ Charts on SmarterTrack 2014

Our latest SmarterTrack 2014 navigation software for PCs is an ideal planning and backup navigation tool for all owners of a dedicated Chart Plotter that uses Navionics charts, as you can copy the charts from your Navionics cartridge on to your PC's hard drive and avoid having to buy additional charts for your PC.

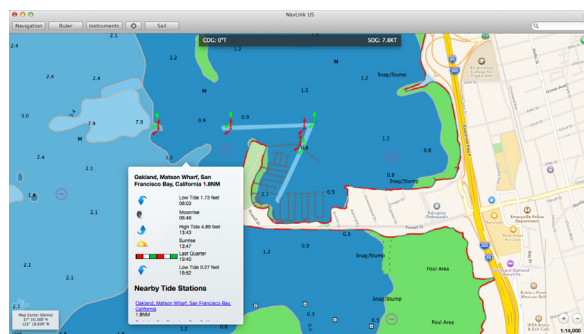


SIGN UP FOR OUR NEWS FEED

www.digitalyacht.net

NavLink MAC

NavLink MAC is an Apple MAC based electronic charting and navigation package which turns a MacBook into a full function chart plotter. The application comes complete with highly detailed NOAA vector charts for the whole of the US and allows real time positioning, tracking and routing. Simply create a route with a click of the mouse to quickly and easily get bearing, distance and ETA information to your destination. AIS targets can also be overlaid onto the electronic charting. Charts can be zoomed and panned using intuitive finger gestures on the MAC track pad.



The MAC will require a GPS connection for location and optional connection to AIS if an AIS overlay of targets is required. Digital Yacht's range of GPS sensors or their low cost USB-NMEA adaptor can be utilised to connect the MAC to the boat's GPS/AIS system. Alternatively, for a wire free solution, NavLink supports a connection via wifi to any of Digital Yacht's NMEA to wireless devices such as iAIS and the WLN10.

The NOAA charts feature incredible detail as they are the official digitised versions of the US Government charts and show buoys, nav aids, depth contours, wrecks, spot depths, restrictions etc. It also supports "drill down" data so an object such as a buoy can be queried for its characteristics. Weather buoys are also supported for local weather conditions (an internet connection is required for this live data) and a tidal atlas is included. NavLink has been designed from the ground up to take advantage of the MACs simplicity of operation and clarity of the high resolution displays on Apple's latest products.

