



Follow our daily news feed at www.digitalyacht.net



NAVLINK FOR MAC

Now available for MacBooks

Take your MAC on-board and turn it into a full function chart plotter. NavLink UK and US versions now available and on the Apple MAC App store now



DIGITAL UPDATE AUGUST 2014

In this issue

NavLink for MAC now available

WL510 Hi Power WiFi system wins Best on Test in PBO

SmarterTrack Lite AIS Viewing app gets a FREE upgrade

Latest Tech Tip's on iOS wifi access through our iNavConnect



MAKE A SPLASH WITH NEW NAVLINK MAC NAVIGATION APP

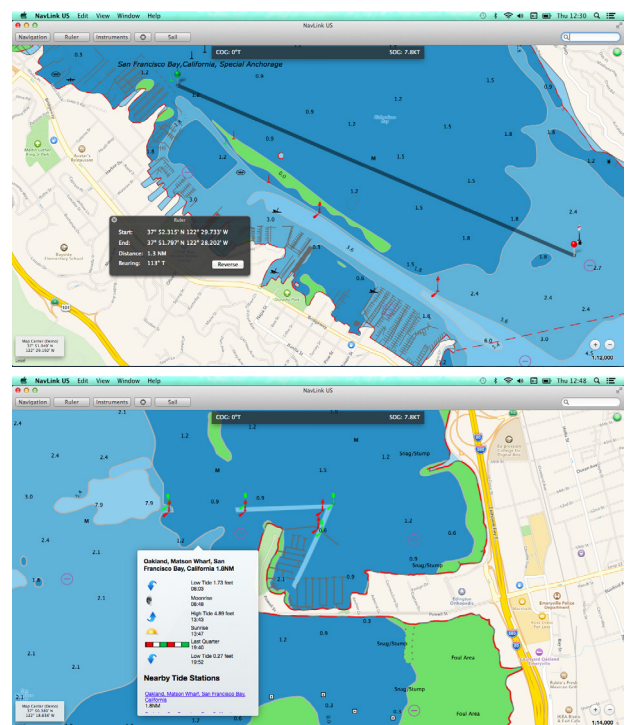
The application comes complete with highly detailed UK Hydrographic Office vector charts for the whole of the UK & Eire and allows real time positioning, tracking and routing. Simply create a route with a click of the mouse to quickly and easily get bearing, distance and ETA information to your destination. AIS targets can also be overlaid onto the electronic charting. Charts can be zoomed and panned using intuitive finger gestures on the MAC track pad.

The MAC will require a GPS connection for location and optional connection to AIS if an AIS overlay of targets is required. Digital Yacht's range of GPS sensors or their low cost USB-NMEA adaptor can be utilised to connect the MAC to the boat's GPS/AIS system. Alternatively, for a wire free solution, NavLink supports a connection via wifi to any of Digital Yacht's NMEA to wireless devices such as iAIS and the WLN10.

The seamless, UKHO charts feature incredible detail as they are the official digitised versions of the UKHO charts and show buoys, nav aids, depth contours, wrecks, spot depths, restrictions etc. It also supports "drill down" data so an object such as a buoy can be queried for its characteristics. Weather buoys are also supported for local weather conditions (an internet connection is required for this live data) and a tidal atlas is included. NavLink MAC users can also share routes with the NavLink iPad app.

NavLink has been designed from the ground up to take advantage of the MACs simplicity of operation and clarity of the high resolution displays on Apple's latest products. The program represents an opportunity for dealers and installers to add a Digital yacht NMEA to wireless adaptor to any system and integrate MacBooks into the boat's navigation system. Priced at £29.95, it's available for download from the MAC app store. A US version is also available and a European version with French, Dutch and German charts will be available shortly.

NavLink MAC is an Apple MAC based electronic charting and navigation package which turns a MacBook into a full function chart plotter. It's priced at just £29.95 including charts and is available to download from the MAC app store.





WL510 WINS BEST-ON-TEST IN PBO REVIEW OF WIFI BOOSTERS

This month's edition of UK boating magazine PBO features a detailed review of wifi access systems. More and more boat owners are demanding internet access whilst afloat and hi power wifi is a reliable, low cost and fast solution. Our well proven WL510 came out Best on Test in this comprehensive test. Digital Yacht offer 3 high power wifi access systems starting with the low cost WL60 USB solution and ranging right through to the WL510 which offers 5-7NM range and internet sharing through our iNavConnect and iNavHub router solutions.

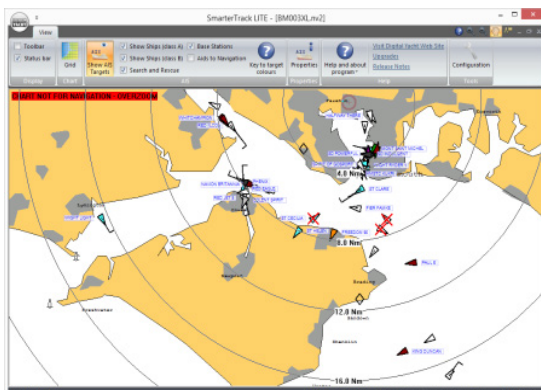
FEATURES

- Ideal solution for permanent installation and new builds
- Network Interface for connection to one PC or to a Router for shared long range connection
- Easy to setup and control from any browser through web based interface
- Adjustable (up to 600mW) Wi-Fi modem and high gain (12dBm/15dBi) omni-directional antenna gives ERP up to 4W
- Supplied with threaded deck mount for antenna and 10m of low loss LMR400 coax cable
- Supplied with 1m network cable - can be extended with any CAT5 network cable (up to 50m)
- Requires connection to boats 12v DC supply
- No drivers - works with all popular operating systems as connects via network interface and set up is done through the web browser



FEATURED PRODUCTS

SMARTERTRACK LITE GETS A FREE MAKEOVER AND UPGRADE



We have released an update to our popular, free SmarterTrack LITE software. Version 1.04 has improved cursor Lat/Lon display in the Status Bar at the bottom of the screen and support for the AIS transponder VDO message which allows SmarterTrack LITE to take the boat's position from the AIS transponder even if it is not outputting traditional NMEA0183 GPS messages like GGL, GGA or RMC.

A number of people have wanted to use SmarterTrack LITE with the Pilot Plug connection of a Class A AIS Transponder and the new version now supports this allowing you to plot the boat's position and all of the AIS targets around the boat, via one of our Pilot Plug adaptor cables or wirelessly using our PilotLink product.

Other popular applications for SmarterTrack LITE are; testing a USB or Wireless enabled AIS unit on a Windows PC or for monitoring the local AIS traffic that our AISNet product is sending to Marine Traffic, AIS Live or any of the other internet AIS services.

KEEP UP TO DATE WITH THE LATEST DEVELOPMENTS

Here's a selection of news from our daily blog.

Interesting AIS Applications – Tender Tracking

Most yachts above 50ft are now equipped with either a Class A or Class B AIS transponder. Any superyacht carrying more than 12 passengers or over 300GRT is mandated to carry a Class A transponder like our CLA1000.



Getting maximum Wi-Fi range on our PilotLink

Our PilotLink wireless NMEA server for connecting a Class A transponder to an iPad or other wireless device is proving very popular with commercial pilots and ship owners. PilotLink is the only wireless product in our range to feature an internal Wi-Fi antenna but its small ceramic chip antenna is very good and should have a range of 50m or more depending upon environmental conditions.



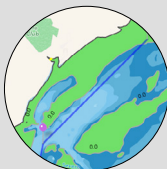
GV30 Combo GPS-VHF Antenna – The Perfect Class B AIS Transponder Antenna Solution

Many users are put off installing a Class B AIS transponder because of the requirement for additional antennas on their space strapped pushpit rail or radar arch. A Class B AIS transponder must have its own internal (built in) dedicated GPS receiver so this requires a dedicated antenna.



Adding a waypoint list to NavLink iPad app

Most navigators use a plotter by visually touching the screen where they want to create a waypoint or mark but there may be times where a list of waypoints needs to be imported – for instance club racing marks or a list of fishing hotspots that's been passed down through generations. Here's a neat way to share a waypoint list on NavLink – our iOS charting and navigation app.



GPS & GLONASS Positioning – A Digital Yacht White Paper

This new whitepaper looks at the development of satellite based positioning systems and discusses the capabilities of our new DualNav technology. The GPS150 sensor from Digital Yacht utilises DualNav GPS and GLONASS satellite positioning for sub 1m accuracy and super fast 10Hz updates.



SIGN UP FOR OUR NEWS FEED

www.digitalyacht.net

TECH-TIP! IPAD INTERNET ACCESS AFLOAT THROUGH OUR INAVCONNECT ROUTER

Many marina wifi systems use a technique known as “Captive Portal” where once you connect to a wifi hotspot you are led to a login page. One customer complained that when using an iPad, he wasn't re-directed as normal.

After a bit of investigation, we traced the problem to the “Auto Login” feature of iOS. This feature is designed to make the process of logging in to public Wi-Fi hotspots as consistent and simple as possible and in most cases works very well. In a hotel, restaurant or coffee shop when you are connecting your iPad/iPhone directly to the hotspot, the “Auto Login” feature takes you straight to the login page and pops up the onscreen keyboard.

The problem seems to appear when you are connecting your iPad/iPhone to the hotspot via a router and long range Wi-Fi adaptor, like our WL450 and WL510. In this situation the “Auto Login” feature of iOS stalls and does not complete the operation.

Fortunately the fix is very easy. Simply connect your iPad/iPhone to the boat's router as normal (such as our iNavConnect or iNavHub) by going to Settings>WiFi and selecting the network name from the list of available wireless networks (see left hand image below). Once the Tick is displayed to show that you are connected, click the blue “Info” icon to the right of the network name and you will see a screen similar to the right hand image below. Problem solved and wifi available!

