

# NavLink for Mac Nav App New features

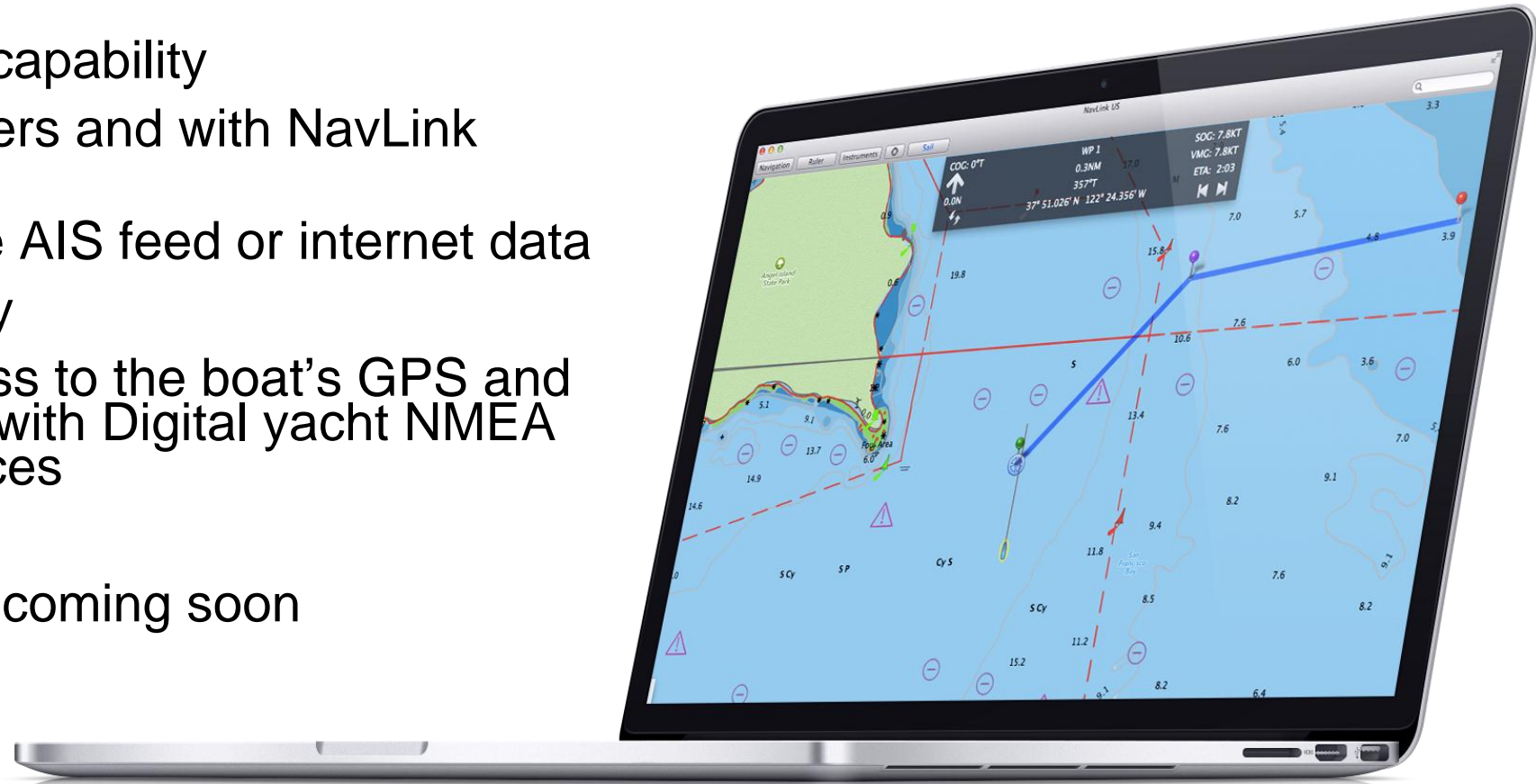
NavLink for MAC is a full featured chart and nav application for Apple MacBook PCs. It's available with detailed UK or US charting included utilising UKHO and NOAA Government data for the best in accuracy and detail. This new release has improved functionality. Take a look at the new features...



# NavLink for MAC Navigation App

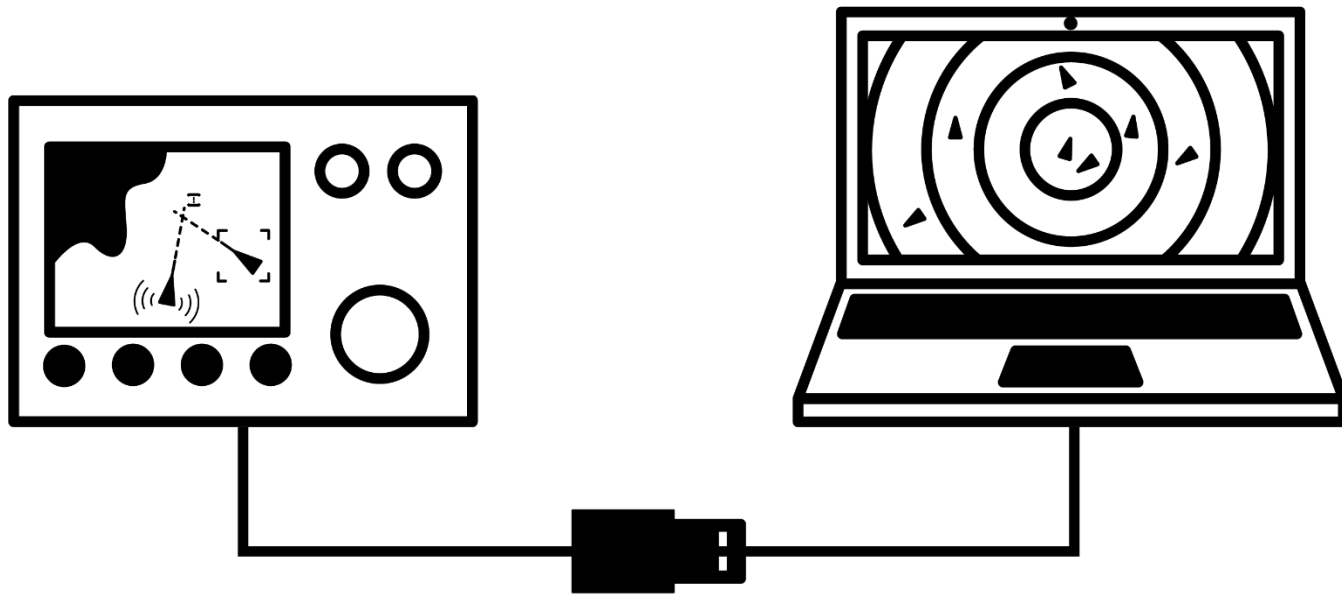
## Key features:

- Converts an Apple MacBook into a full featured electronic chart plotter
- Waypoint, route and track capability
- Share routes with other users and with NavLink iPad/iPhone app
- AIS target overlay from live AIS feed or internet data
- Tide and weather capability
- Connect via USB or wireless to the boat's GPS and AIS systems – compatible with Digital yacht NMEA servers and USB AIS devices
- UK or US charting built in
- European charting options coming soon



# Integrating NavLink

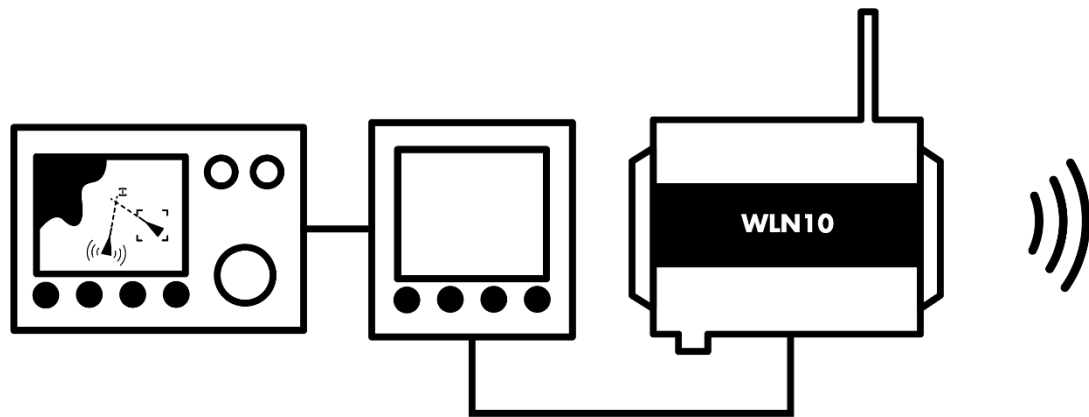
## Option: Connect Via USB



Utilise a Digital Yacht NMEA-USB cable to integrate the MacBook via a wired connection.

This device has a well proven driver for all versions of MAC OS and can support a single channel of NMEA data at 4800 or 38400 baud. If you have multiple inputs (eg GPS and AIS) utilise the Digital Yacht MUX100 2 channel NMEA multiplexer

# Integrating NavLink Option: Connect Via WiFi



**This is the preferred solution as it allows a cable free and easy installation.**

**Utilise a Digital Yacht NMEA-WiFi device such as the WLN10, iAIS, AIT3000 or WLN10 to integrate the MacBook into the boat's NMEA system via a simple on board wifi connection. Connect the MacBook to the wifi hotspot created by the server and get real time data streamed across to the MacBook**

# New Features

Walk through the new features





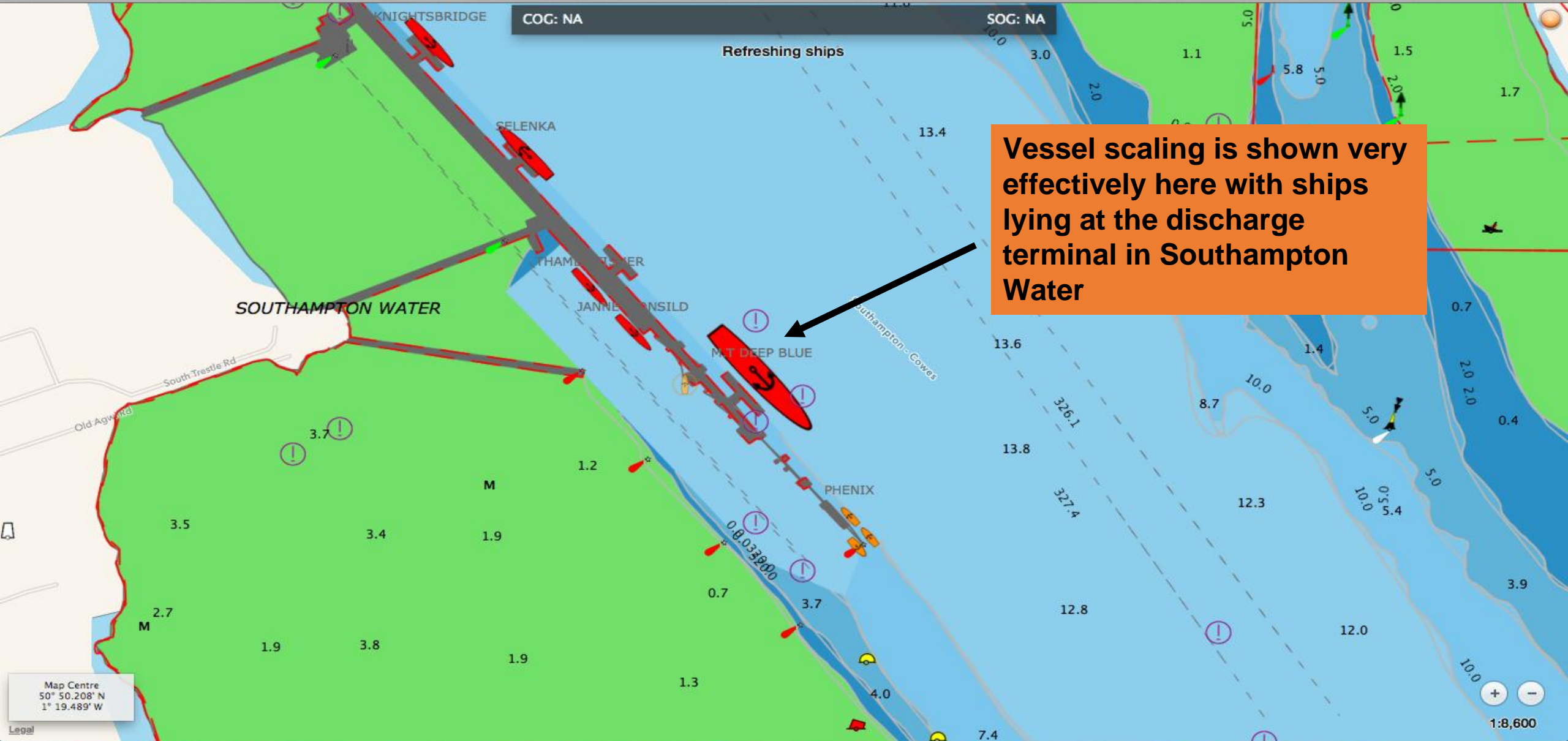
**NavLink now supports an improved AIS presentation.**

**Note how targets and now scaled and colour coded according to type.**

**Seeing the size of the target makes anti collision calculations much easier as you can see if you'll pass ahead or astern of the vessel**

**Note the anchor symbol for moored vessels**





Vessel scaling is shown very effectively here with ships lying at the discharge terminal in Southampton Water

Map Centre  
50° 50.208' N  
1° 19.489' W



**AIS and realtime GPS data from the AIS transponder can be connected to NavLink using a wireless connection.**

**Add wireless connectivity utilising any of Digital Yacht's NMEA to Wireless servers or utilise the new AIT3000 Class B transponder with built in wireless.**

**AIS/GPS data can also be sent via USB utilising Digital Yacht's USB-NMEA adaptor**

Preferences

General Map Layers Charts GPS and AIS Advanced

External Data Sources

GPS USB/Bluetooth Device (4800 baud)  
None Status ●

No port selected for GPS device

---

Internet AIS ship data Status ●

NMEA 0183 (GPS and/or AIS)

Connection USB UDP TCP

Stop IP

Use GPS GPS Status ●

Use AIS AIS Status ●

Not receiving data on "UDP", is GPS device connected and turned on?

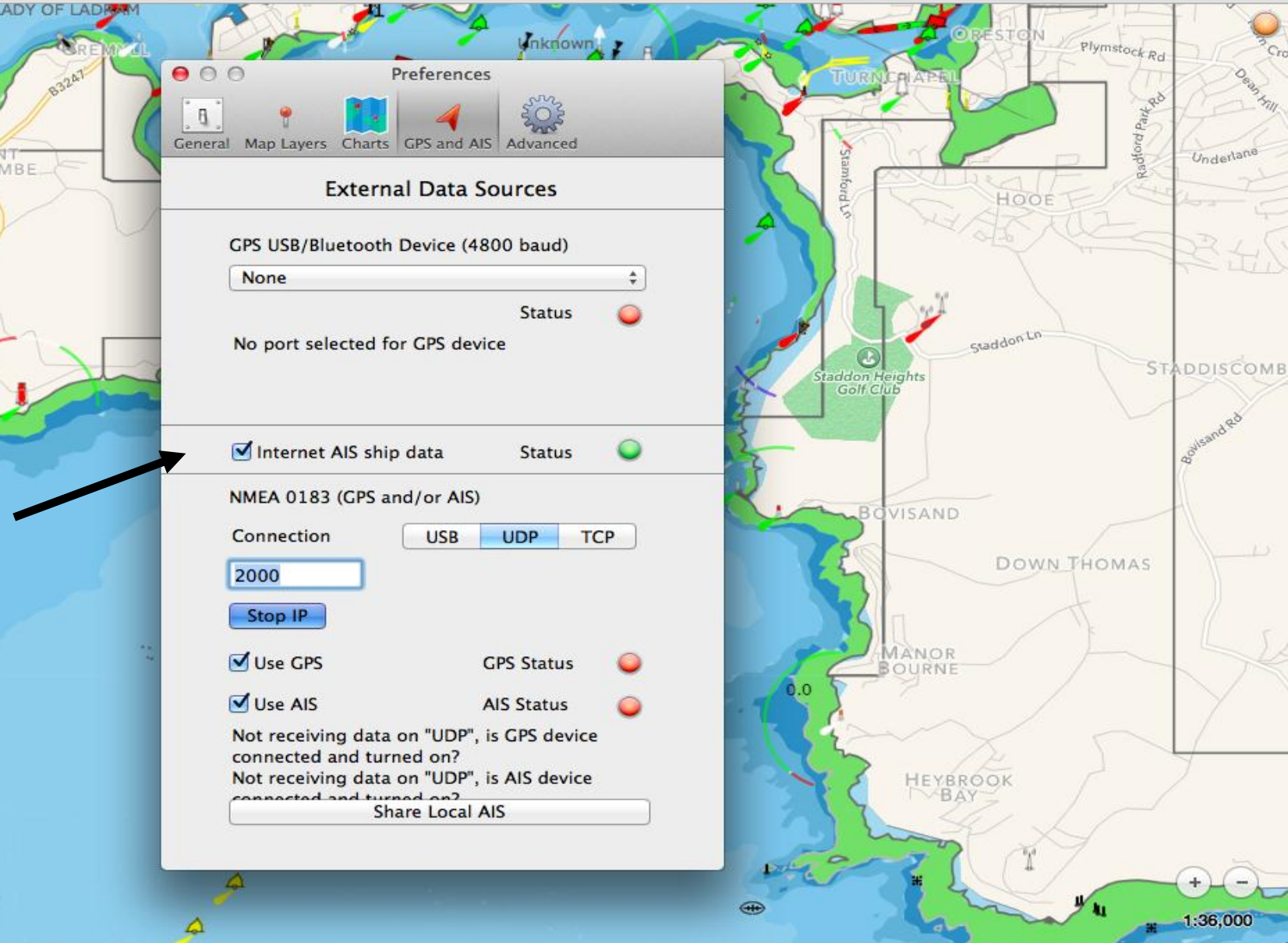
Not receiving data on "UDP", is AIS device connected and turned on?





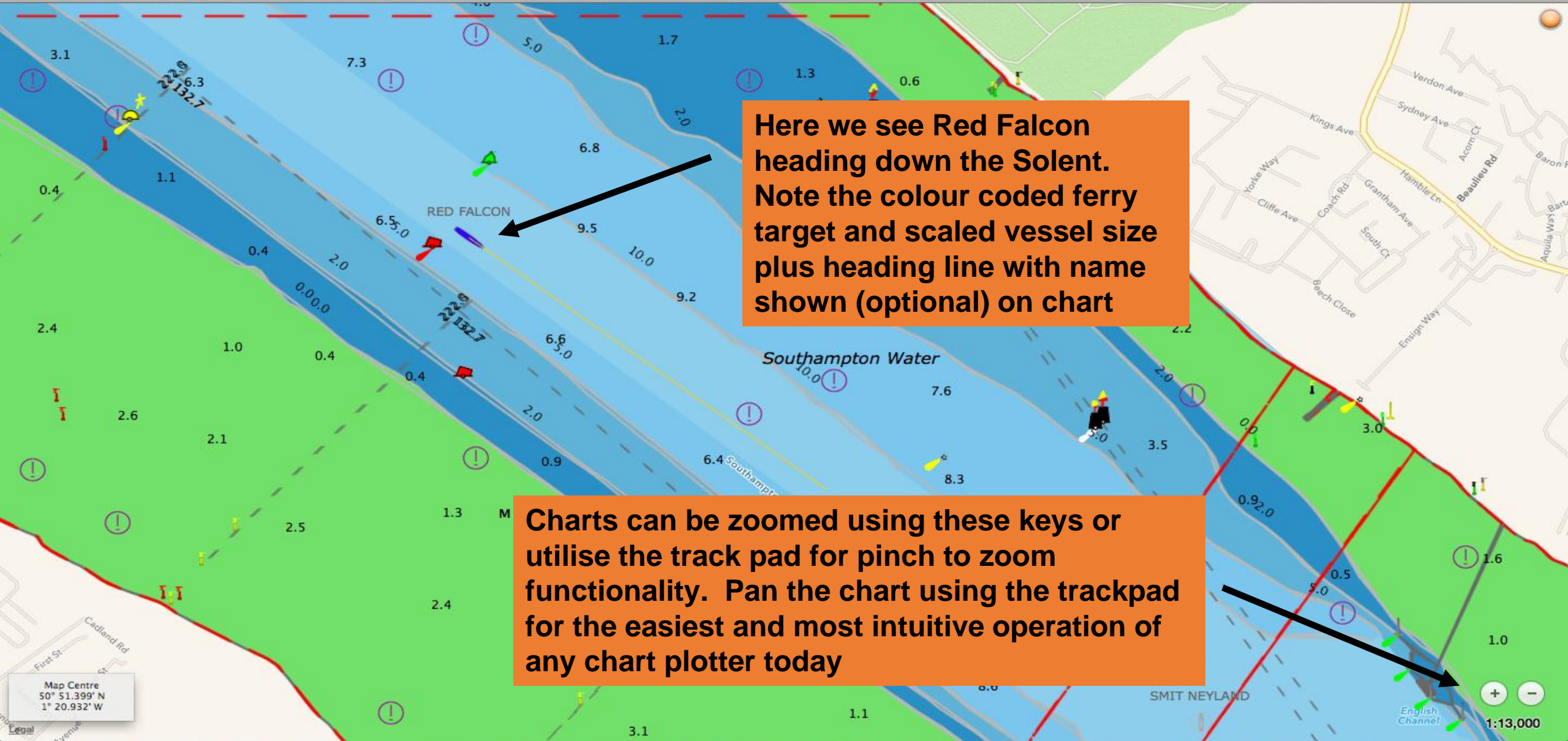
**NavLink now also supports an internet feed of AIS data. This relies upon an internet data connection but allows you to see vessels away from your current location or while using NavLink for planning when ashore**

**Internet AIS can be enabled and disabled as required but it is not recommended for realtime navigation – instead connect to your onboard AIS and GPS systems using Digital Yacht NMEA to wifi servers**



Map Centre  
50° 20.301' N  
4° 9.690' W





Here we see Red Falcon heading down the Solent. Note the colour coded ferry target and scaled vessel size plus heading line with name shown (optional) on chart

Charts can be zoomed using these keys or utilise the track pad for pinch to zoom functionality. Pan the chart using the trackpad for the easiest and most intuitive operation of any chart plotter today

Map Centre  
50° 51.399' N  
1° 20.932' W





— Passenger: RED FALCON

Dredged Area, depth > 12.6m

⚠ ANCHORING RESTRICTED

Sea Area 0: SOUTHAMPTON WATER

Sail to Here  
Start New Route Here

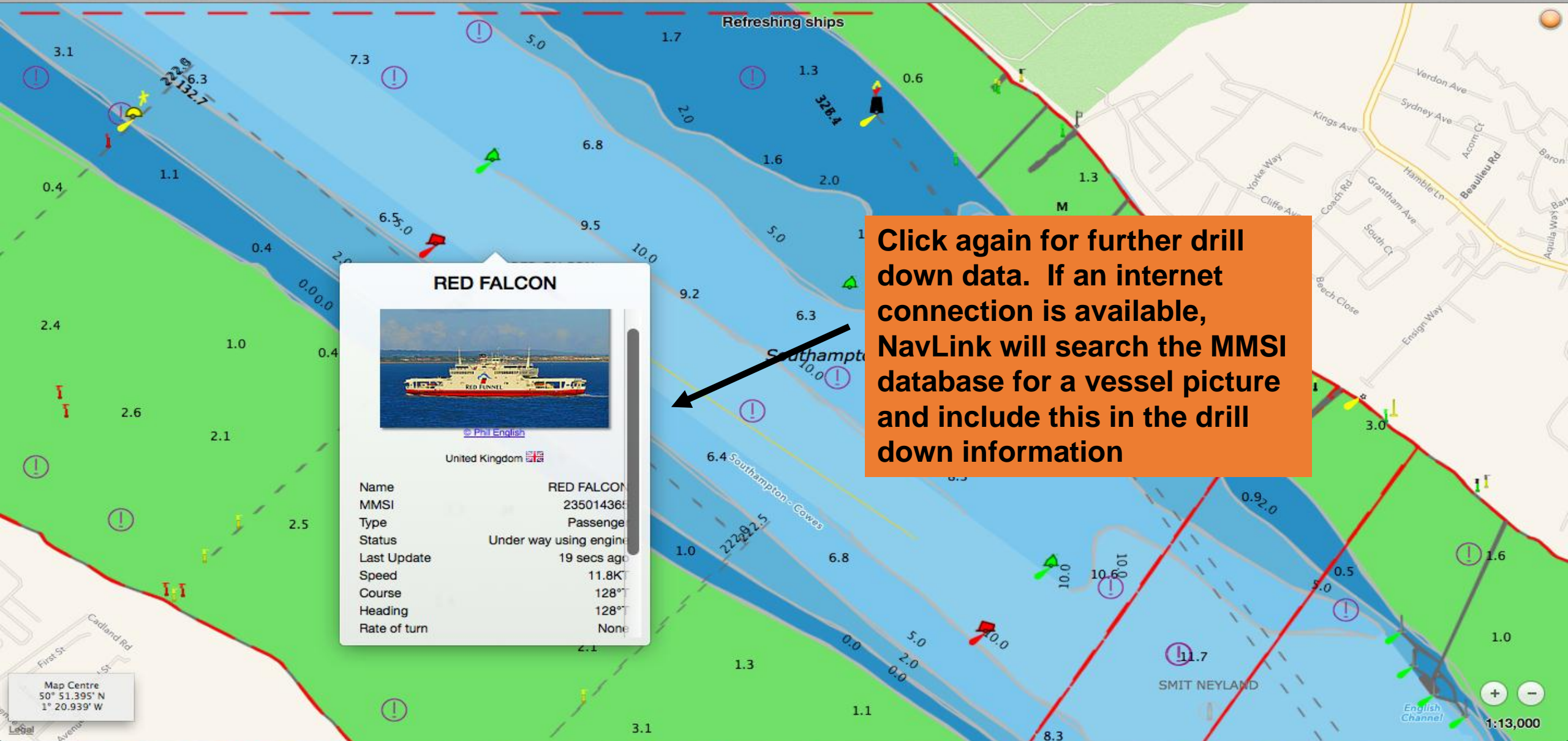
Weather  
Tides

**Click on any point or target and get further information**

Map Centre  
50° 51.395' N  
1° 20.939' W

1:13,000



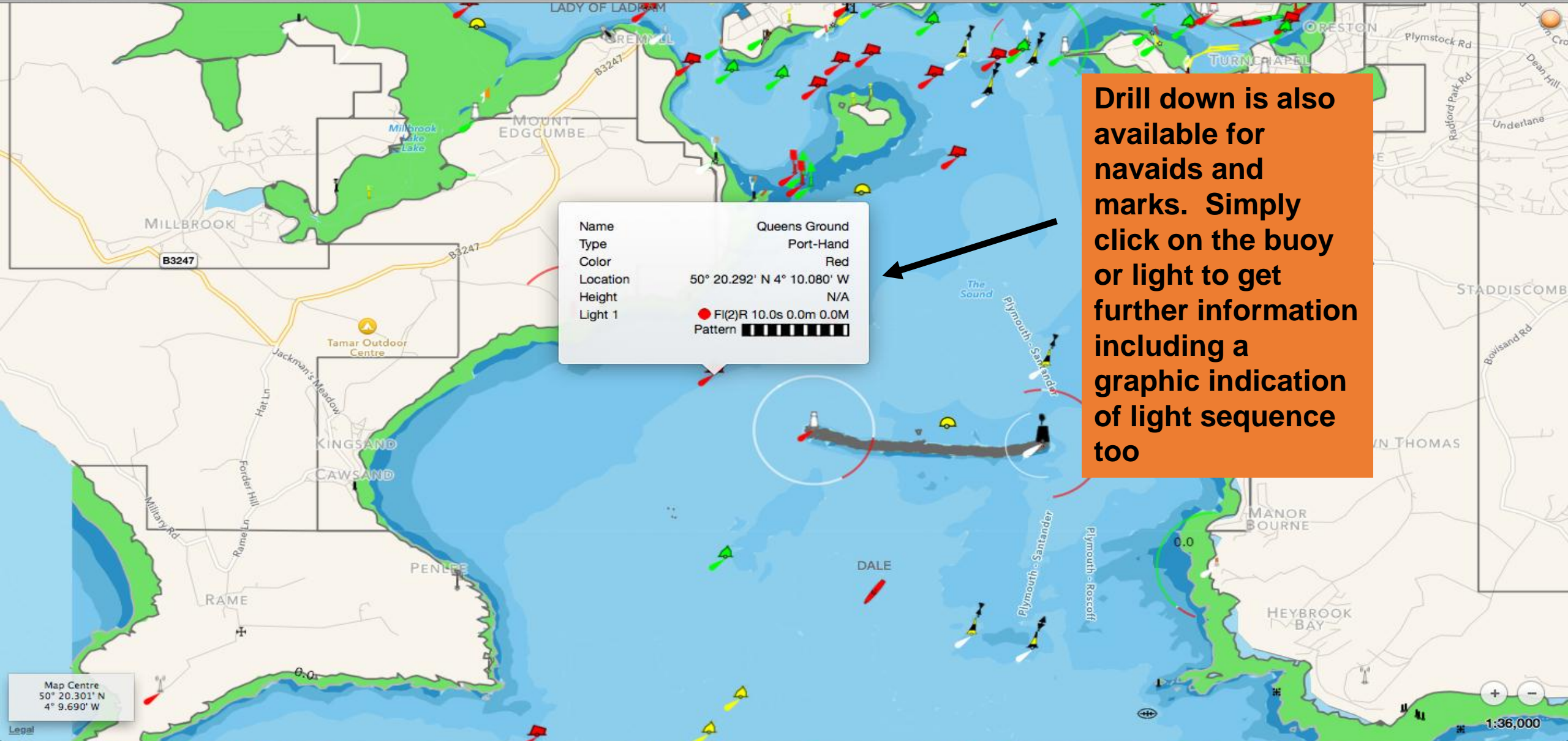


**Click again for further drill down data. If an internet connection is available, NavLink will search the MMSI database for a vessel picture and include this in the drill down information**



Map Centre  
50° 51.395' N  
1° 20.939' W





**Drill down is also available for nav aids and marks. Simply click on the buoy or light to get further information including a graphic indication of light sequence too**



Map Centre  
50° 20.301' N  
4° 9.690' W

1:36,000



Routes Tracks

Route Name: Route2  
Route Length: 7.4NM

Show Route on Map

← Back to Routes

WP 1  
51° 31.700' N 2° 4...  
To WP 2: 4.6NM - A...

WP 2  
51° 29.423' N 2° 4...  
To WP 3: 1.2NM - A...

WP 3  
51° 28.710' N 2° 5...  
To WP 4: 1.5NM - A...

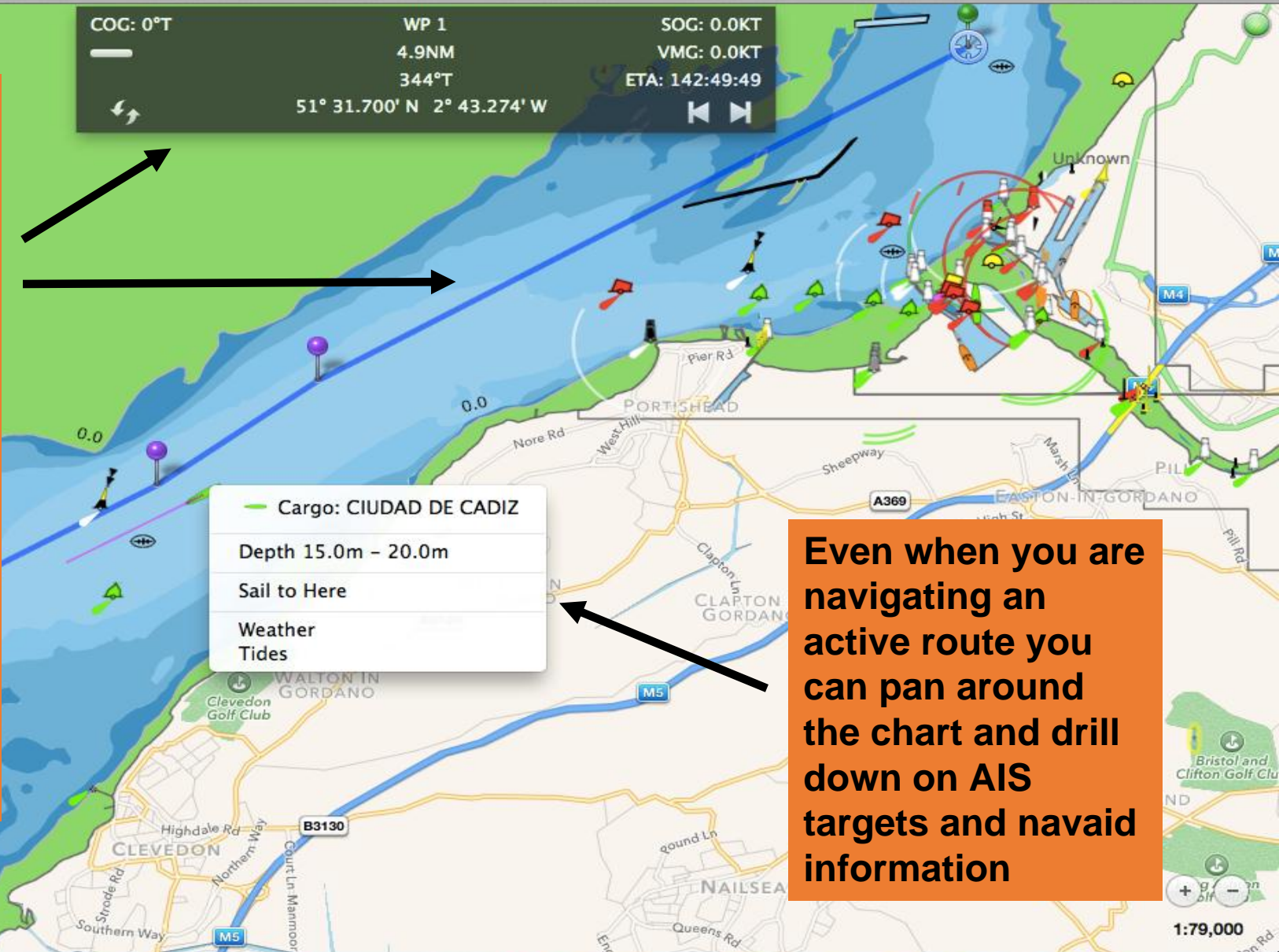
WP 4  
51° 27.962' N 2° 5...

Edit Route Delete

**Build a route with one click simplicity. Once active you'll get a dynamic navigation bar showing waypoint bearing and distance plus ETA and VMG too**

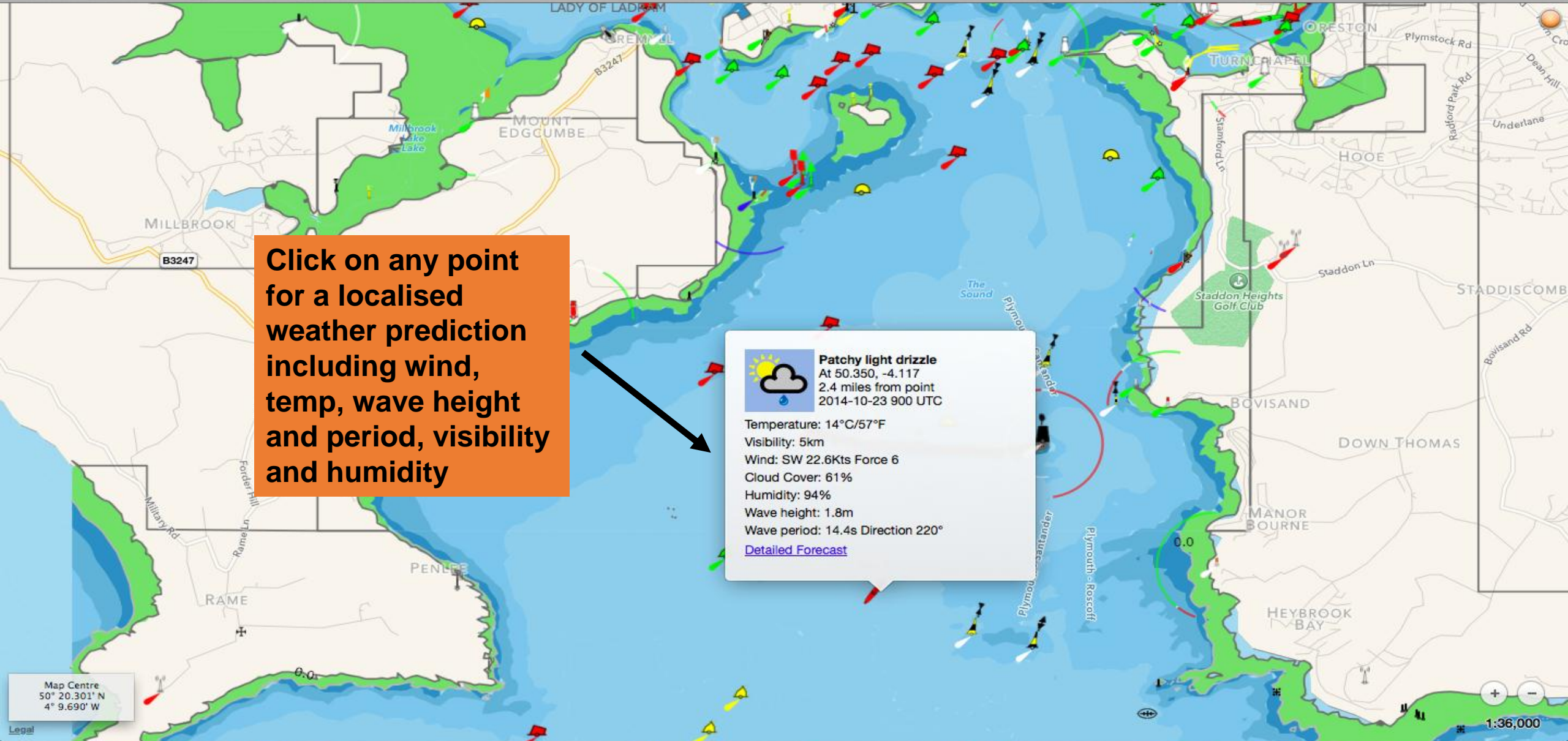
**Your current position and track are updated on the detailed charts too**

**Share routes too!**



**Even when you are navigating an active route you can pan around the chart and drill down on AIS targets and navaid information**





**Click on any point for a localised weather prediction including wind, temp, wave height and period, visibility and humidity**

 **Patchy light drizzle**  
 At 50.350, -4.117  
 2.4 miles from point  
 2014-10-23 900 UTC

Temperature: 14°C/57°F  
 Visibility: 5km  
 Wind: SW 22.6Kts Force 6  
 Cloud Cover: 61%  
 Humidity: 94%  
 Wave height: 1.8m  
 Wave period: 14.4s Direction 220°  
[Detailed Forecast](#)

Map Centre  
 50° 20.301' N  
 4° 9.690' W

1:36,000



**Get NavLink UK or NavLink US direct from the MAC App Store**

