



SAIL BOAT



MOTOR BOAT



SPEED BOAT



FISHING BOAT



TUG BOAT



FISHING BOAT

Follow our newsfeed at [www.digitalyacht.net](http://www.digitalyacht.net)

## METS 20 New Product TRADE 17 Launches At METS 2017

Digital Yacht have a double award nomination for the prestigious DAME innovation award at this year's 2017 METS exhibition with our Nomad portable AIS solution and OutBoardView fuel economy app both entering the final award stages.

Nomad is a new, portable AIS navigation solution. Designed for recreational boaters and professional mariners, it offers a full function, Class B AIS transponder with a wireless and USB interface built in for tablets and PCs - all in a portable, compact package. It's powered from any USB connection so can be used with USB power packs, outlets or chargers. It brings AIS to a new sector of boaters such as rentals, charters and delivery skippers.

OutboardView is a new Android app based on the open source Signal K platform and the iKommunicate interface from Digital Yacht. It's designed to allow a smartphone or tablet to display engine data and calculate optimum fuel efficiency. With an easy to understand trim gauge - make your trim and rpm adjustments and get a realtime view of fuel efficiency.

We've a host of new products for 2018 which will launch at the show and here's a quick snapshot. We'll be exhibiting in Hall 1:Booth 434 and look forward to seeing you there ,14-16 November, Amsterdam RAI



# DIGITAL UPDATE

## METS - NOVEMBER 2017

### In this issue:

- Nomad Class B AIS
- 4G Connect Internet Solution
- SeaTalk to NMEA Converter
- iSeaSense Instrument Solutions
- NMEA 2000 Starter Kit
- AIS Receiver with QMax antenna
- OutBoardView Monitoring App
- iAIS gets Navionics chart option



# 4G CONNECT INTERNET ACCESS AFLOAT

## 4G<sup>Connect</sup>

4G Connect is a new 2G/3G/4G (LTE) internet access solution for use afloat. It utilises the latest MIMO technology with dual antennas for fast, long range access and incorporates a full function wifi router so devices can connect wirelessly. There is also a wired LAN port and WAN port - for connection to high power wifi devices or satellite modems.

4G Connect is available in two variants. The Standard model has built in antennas which will provide good performance when in port. The Pro model ships with two external hi gain antennas for exceptional long range performance and is the recommended solution for use afloat.

4G Connect has an easy to use interface and ships with a built in, low cost Vodafone roaming SIM. It is SIM unlocked so users are free to use any cellular provider they choose but the Vodafone solution offers the best maritime performance in Europe

Operation is simple - turn on, connect to the password protected wifi hotspot that 4G Connect creates and your device is online. Digital Yacht's WL510 hi power wifi solution can also be connected to the WAN port for a choice between wifi and 4G connectivity. iKommunicate can also connect to the LAN port providing boat NMEA data on the wifi network for use with navigation apps.

**"Reliable internet afloat with 4G Connect - Digital Yacht's new LTE internet access solution"**





# NOMAD PORTABLE AIS TRANSPONDER

## NOMAD

Nomad is a new, portable AIS navigation solution from Digital Yacht. Designed for recreational boaters and professional mariners, it offers a full function, Class B AIS transponder with a wireless and USB interface built in for tablets and PCs - all in a portable, compact package.

It addresses the needs of so many boaters who want a portable yet sophisticated navigation solution with AIS and GPS and the ability to interface with tablets, PCs and smart phones. It appeals to charter skippers, professional mariners like delivery skippers and pilots as well as boat owners who don't want the hassle or cost of installing a dedicated transponder and like the concept of easy iPad and tablet navigation using their favourite charting apps with a detailed AIS overlay and real time GPS positioning.



**"A new concept in portable navigation - a full function Class B AIS transponder with USB power and wireless interface"**

Cont...

As a full function Class B transponder, it also sends you boat position to other AIS users.

It incorporates an innovative USB power solution allowing the Nomad to be powered from any standard USB source. This can include low cost, 3rd party battery packs, a USB PC connection or 12V USB adaptors/cigarette lighter adaptors. The GPS is built in and Nomad ships with a compact, 25cm external VHF antenna with sucker cup mount. It can also connect to any regular VHF antenna.

WiFi and USB interfaces are standard and there are a wide range of free and premium compatible apps for iOS, Android, PC and MAC. The wifi connection allows up to 7 tablets or iPads to connect

**Includes QMax 25cm  
AIS portable antenna for  
easy installation**



**DAME**  
NOMINATED  
2017





# NMEA 2000 Installation Made Easy

## NMEA 2000 Starter Kit

NMEA 2000 has now become the de-facto standard throughout the marine electronics industry for interconnection of devices. It uses a simple backbone (or sometimes called "trunk") structure which requires terminators at each end of the cabling and then each device can be spurred off using a drop cable. The bus also requires power. Waterproof connectors are used throughout for maximum reliability and it makes for an easy plug 'n play installation.

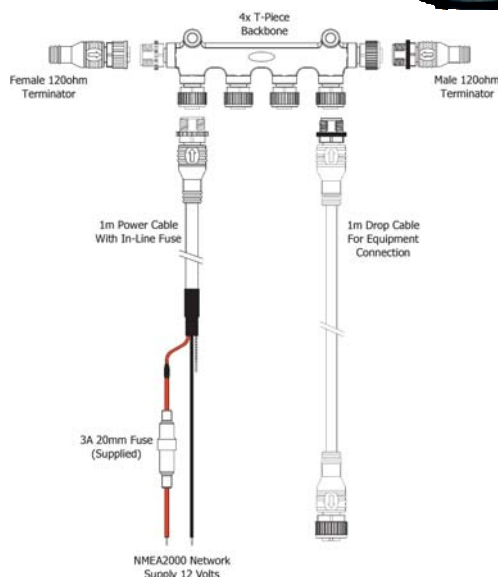
Digital Yacht have introduced a new NMEA 2000 starter kit which allows for up to 3 devices to interconnect - say AIS, plotter and autopilot and comes complete with terminators and a power cable. It uses the high quality, nickel plated metal style connectors rather than the cheaper plastic type which can prove unreliable. The backbone is formed from a unique 6 way extension block with ports at each end that accommodate the terminators. This allows for a really neat and compact installation - ideal for behind the helm. It's suitable for DIY installers as well as boat builders who want an easy and value priced solution for integrating and installing modern boat electronics.

The connection system will work with all leading brands and can be expanded using standard components as required.

**"A universal NMEA 2000 starter kit with terminators, power cable, drop cable and multi way connection block"**

### Includes:

NMEA 2000 power cable  
Terminators (x2)  
1m drop cable  
6 way NMEA 2000 connector block



The standard package allows for up to 3 NMEA 2000 devices to interconnect - just add an additional starter kit to expand and it's also compatible with other standard NMEA 2000 components. Top quality, approved and rugged metal connectors make this a superior product



# APPS That make boating better

## OutboardView

OutboardView is a new app from Digital Yacht designed to allow a smartphone or tablet to display engine data and calculate optimum efficiency.

Fuel economy while boating is a major consideration with a modern 300 HP outboard consuming around 100 l/ph at wide open throttle. Small changes to trim or RPM can make a massive difference to the optimum economy plus sea state and weather are also variables which constantly impact the "sweet spot"



**DAME**  
NOMINATED  
2017

**For  
Android**

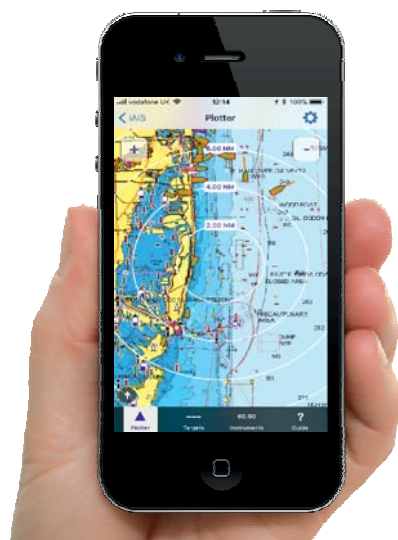
Most modern outboards are now fitted with a NMEA 2000 interface. Digital Yacht have developed an Android phone and tablet app called OutboardView designed to show all the current engine parameters such as RPM, boat speed, oil temp and pressure as well as calculating optimum fuel economy with an easy to understand trim gauge - make your trim and rpm adjustments and get a realtime view of fuel efficiency. It's designed to integrate with Digital Yacht's iKommunicate NMEA to Signal K gateway so data can easily be picked up from the NMEA 2000 backbone.

**"Boaters love their smart phones and integrated apps like iAIS make complex navigation easier and safer"**

## iAIS Gets Navionics Option

A new version of our popular iAIS iPhone and iPad app will be available shortly featuring an exciting new in-app purchase. You'll be able to integrate a background layer of Navionics' charting on to the iAIS display. What's more, you don't have to repurchase Navionics charts so it will appeal to the 1M+ users of the popular Navionics app. You'll see your current position plus the AIS traffic around you all on a detailed Navionics' chart. Tap on a target for drill down information.

iAIS is designed to integrate AIS data from any of Digital Yacht's compatible wifi and transponder products. It will also be able to display internet AIS data.



**For  
iOS**

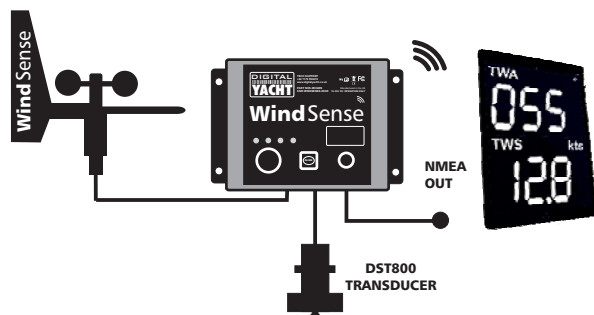


# iSeaSense Flexible Instrumentation

## WindSense

WindSense is a great starter pack for any sailor looking to add wind instrumentation. WindSense has a very high quality mast head unit which is wired to the below deck wifi box - providing a feed for up to 7 connected devices. Utilise your tablet or smartphone as an instrument display with 100's compatible apps. Plus there's a NMEA output for traditional instrument displays and input for any compatible NMEA 0183 data.

The DST800 transducer has now been added to our solution, providing depth, speed and temp information to the system. With boat speed and wind information, compatible apps can calculate true and apparent wind speed and direction. Check our our new iSeaSense solutions pricelist for ideas on system expansion



Further expansion is possible utilising our iKommunicate universal interface and iKConnect router in which case the WindSense wifi unit is not required and the WND100 mast head unit can connect direct to the iKommunicate interface

**"Windsense makes a great start to a fully integrated instrument system with the DST800 transducer adding speed and depth"**

## iKommunicate PLUS iKConnect router bundle



Our NavLink NMEA 2000 to wifi server is now end of line and replaced with a new solution comprising iKommunicate plus iKConnect wifi router. This has the advantage that both NMEA 2000 and NMEA 0183 interfaces are available as well as support for password protected wifi and a wired ethernet output. Plus the bundle option is priced at the same as the original NavLink product despite the extra features

In addition to NMEA over wifi interfacing, iKommunicate supports the new and rapidly emerging Signal K protocol to future proof your electronic systems.

- NMEA 2000 AND NMEA 0183 inputs (x 3)
- Password protected
- Wifi and LAN connections
- WAN interface for internet connectivity
- Supports 200 active connections
- SD card for data logging and webserver applications
- Built in interfaces for web instrument displays without any dedicated app requirement
- Signal K support





# SeaTalk To NMEA Interface

## AIS100 USB AIS Receiver with QMax Antenna

A new variant of our AIS100 is now available with the QMax portable VHF antenna. The AIS100 has a USB interface for power and data allowing it to be self powered from a PC or MAC. With the compact 25cm QMax antenna, it's the perfect solution for skippers wanting a PC based navigation solution with a simple AIS receiver. It suits charter skippers too with the portable antenna.

The USB driver is compatible with Windows and MAC and supports most modern PC navigation programs like SmarterTrack, Nobeltec, Maxsea, Seapro, Rosepoint etc

This package replaces our uAIS product and is available now.



**"Get older Raymarine ST50 and ST60 systems connected to our wireless NMEA devices for iPad and tablet navigation"**

## NMEA to SeaTalk Interface



Digital Yacht's new ST-NMEA Converter provides bi-directional conversion of SeaTalk and NMEA 0183 data.

SeaTalk the original networking protocol developed by Autohelm and maintained by Raymarine is still alive and kicking on many boats around the world. With Raymarine's own SeaTalk to NMEA Interface (E85001) going "End Of Life", Digital Yacht's ST-NMEA converter will now provide a simple and cost effective solution for anyone wanting to connect their SeaTalk network to NMEA0183 equipment or one of Digital Yacht's wireless NMEA devices for display on iOS or Android Apps.

Available in two versions - ISO for direct connection to NMEA 0183 equipment or USB for connection to a Windows/LINUX/Mac computer, the ST-NMEA converter allows any boat owner with an older Autohelm/Raymarine SeaTalk 1 network to connect it to NMEA 0183 compatible equipment or software. Conversely, you can also replace a failed speed, depth, wind or GPS sensor with a new NMEA 0183 sensor without having to replace everything.



Sail Boat



Motor Boat



Superyacht



Work Boat



Sport Fishing



Commercial Fishing

Follow our newsfeed at [www.digitalyacht.net](http://www.digitalyacht.net)

## Digital Yacht UK

6 Farleigh Court  
Flax Bourton  
Bristol. BS48 1UR

TEL 01179 55 44 74  
[www.digitalyacht.co.uk](http://www.digitalyacht.co.uk)