



Follow our newsfeed at www.digitalyacht.net

Focus:

Class B+ AIS

5W SOTDMA Transponders



Class B+ is a new generation of AIS functionality based on SOTDMA (self organised TDMA) messaging rather than the simpler CSTDMA (carrier sense TDMA). It guarantees your AIS transmission will get a time slot, even in areas of very high traffic density.

It also specifies a 5W transmission power (compared with 2W for Class B) and a transmission rate that increases as the vessel moves faster. With regular Class B protocol, the transmission rate is fixed at every 30 seconds when the vessel's is moving.

Digital Yacht have two new models of transponder to utilise this technology including the AIT5000 which also has a new, advanced wireless interface - find out more inside.

DIGITAL UPDATE

April 2020

- NEW! Digital Yacht 40 page product guide
- NEW! Digital Yacht CLA2000 Class A AIS Transponder
- NEW! NavLink HD iOS Charting app gets an update
- NEW! Check out our new tech training and 3rd party interface information

Stay Safe! We're Open & Working Safely Despite The Corvid Pandemic



AIT5000 Class B+ 5W AIS Transponder

Flagship AIT5000 has an upgrade...

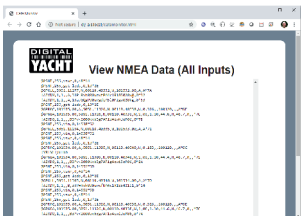
Class B+ is a new generation of AIS functionality based on SOTDMA (self organised TDMA) messaging rather than the simpler CSTDMA (carrier sense TDMA). It guarantees your AIS transmission will get a time slot, even in areas of very high traffic density.

It also specifies a 5W transmission power (compared with 2W for Class B) and a transmission rate that increases as the vessel moves faster. With regular Class B protocol, the transmission rate is fixed at every 30 seconds when the vessels is moving.

It's ideal for ocean sailors requiring the best possible performance, fast power boats and smaller non-mandated commercial vessels. Our new AIT2500 & AIT5000 transponders incorporate this latest technology.

- A 250% increase in power output for extended range and better satellite AIS tracking capability
- Faster update rates (5/15/30 seconds depending upon vessel speed)
- Guaranteed transmission slot using the SOTDMA transmission technology (same as Class A transponders)

New Wireless Interface



One key feature of the new AIT5000 is a wireless interface - it allows popular apps like Navionics, Weather 4D, SailGrib, NavLink, iNavX, Maxsea and hundreds more to use AIS, GPS and NMEA data from the AIT5000.

This turns your iPad, tablet, PC or smartphone into a sophisticated charting and navigation system.

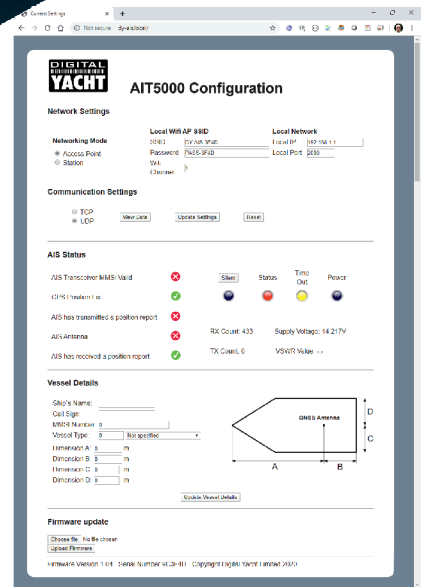
The new wifi interface technology just incorporated into the AIT5000 also allows you to access setup and diagnostics through any connected device via a web browser. It saves installing software for setup and offers real time diagnostics from any device.

The new wifi interface supports full password protection and also allows multiple devices to connect so you can have a PC at the chart table and an iPad in the cockpit. Up to 7 devices can connect. It can also join an existing wifi network.

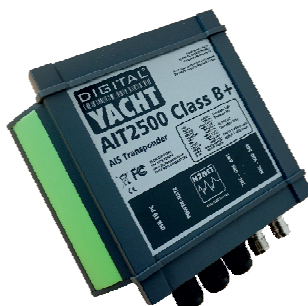


AIT5000 Key Features

- Class B+ 5W transponder with GPS/GLONASS positioning
- Integrated and patented ZeroLoss VHF-AIS antenna splitter (share the VHF antenna)
- Multiple NMEA 0183 in/out and multiplex capability
- NMEA 2000 connectivity
- USB connectivity for PC/MAC
- Bi directional wireless interface for tablets and PC
- Sophisticated yet easy to use web interface for programming, diagnostics and wireless setup - no software to install
- Remote TX silence switch option
- Supplied with GPS antenna
- FM radio outlet for stereo
- The AIS all-in-one Nucleus solution with AIS SART alarm option too



Value Priced AIT2500 Offers Class B+ Too



The AIT2500 shares the same sophisticated, high performance SOTDMA Class B+ technology as the AIT5000 but doesn't incorporate a wireless interface or VHF antenna splitter. It's a great choice if you prefer to fit a dedicated antenna or have a spare VHF antenna already installed. Wireless interfacing can be added with our WLN10SM or NavLink 2 NMEA to WiFi gateways



CLA2000 Class A AIS Transponder

CLA2000 - Professional Grade Class A Transponder



Digital Yacht's new CLA2000 is the ultimate SOLAS and inland waterway globally approved Class A AIS transponder. Water and weather proof to IP67 and a full integrated 5" hi-res colour display. The CLA2000 supports a wide range of functionality including electronic chart navigation with optional C-Map MAX charting and AIS target management.

Proven, superior real world AIS message receive and transmit (12.5W) and message processing performance is delivered by advanced core SDR AIS technology. This state of the art technology ensures you see more targets, more of the time and at maximum range.

The CLA2000 will find applications on SOLAS mandated vessels over 300GRT. workboats, rescue services, inland waterways users, RIBs and recreational craft wanting premium AIS performance and safety. Besides regular Class B, AtoNs and Class A AIS detection, the CLA2000 has optimised software for detecting AIS SART and MOB devices with a dedicated icon for this class of AIS. As a result, detection of an activation by an AIS SART beacon activates an automatic alarm. The target plot display will calculate relative bearing of the device allowing for easy visualisation of the target and rescue.

Key features:

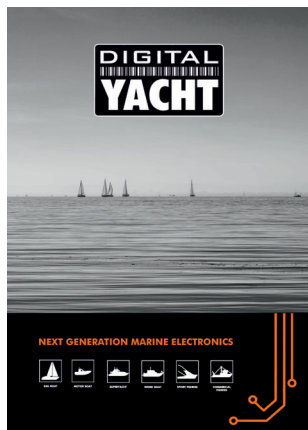
- Globally approved Class A AIS transponder
- High resolution, 800 x 480 pixel 5" colour display (MKD) with easy to use, fast user interface
- Bracket or flush mount – waterproof to IPX7
- Integrated GPS with external antenna (supplied) or utilise external NMEA feed (user selectable)
- 3 x NMEA 0183 interface (bi-directional for plotter, ECDIS, radar etc) plus NMEA 2000 interface
- 3 x sensor input ports (eg BlueBoard, external GNSS, gyro etc)
- Built in SD card slot for AIS data port logging or C-Map MAX mapping capability with optional C-Map data card
- Built in wi-fi for connection to iPads and tablets for wireless navigation
- Sophisticated AIS SART MOB alarm and display capability
- User programmable alarms for CPA and TCPA
- Advanced filtering of targets
- External alarm and remote silence switch capability

On the front panel of the CLA2000 there is a integrated micro SD card reader behind a waterproof cover. This micro SD card reader supports software updates, data logging of AIS and position data to a blank card. Compatibility with C- Map MAX charting cards for optional detailed back ground charting is also possible. The CLA2000 has an integrated wireless interface, allowing AIS and position data to be sent to smart phones, tablets, and PCs for use with navigation apps. Devices can connect directly to the CLA2000 through the supported client mode that connects to an existing wireless network or AP mode as a stand alone system. Up to 5 simultaneous/connected devices are supported. Download the full information pack online.

40 Page 2020 Catalogue Now Available

Digital Yacht's new product guide has just been printed. It's a great resource with detailed AIS, GPS and iPad navigation technology reviews as well as detailed product information. We're sad we're not handing them out at exhibitions but you can still download a digital copy from our blog at www.digitalyacht.net

Just search for 2020 Product Guide





NavLINK HD iOS iPad Navigation App

NavLINK HD Upgrade

NavLink HD is a sophisticated charting and AIS app for on board, real time navigation. It's designed for iPhones and iPads. It's free to download and try and uses detailed S57 ECDIS official charts - such as those produced by the Admiralty in the UK for professional navigation. Charts are available for UK, Eire, France (Channel and Atlantic Coasts), Spain, Germany, Denmark, Belgium and the Netherlands and are a low cost "in app" purchase. US & Canadian charts are also available with US charts having the option of raster or vector formats from NOAA.

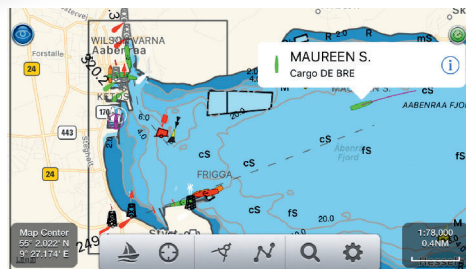
Once charts are downloaded, NavLink is designed to connect to any of Digital Yacht's NMEA WiFi gateways or wireless enabled AIS products like our iAIS, Nomad, AIT3000 or AIT5000. GPS, AIS and other NMEA data is then available for the app to provide positioning, route guidance, realtime AIS overlays and instrument readouts.

Simply click on the chart for tide and weather data or to create a new mark or route. Animated 10 day weather forecasts are available with a low cost Windy subscription currently £7.99/year. Free weather buoy data is also supported when an internet connection is available.

When connected, real time AIS data is available from the boat's system as an overlay onto the charts with colour coded and scaled AIS targets with full drill down static



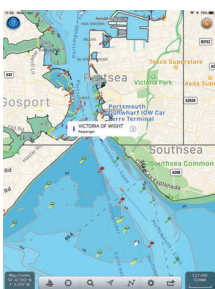
NavLink is a free to try download from the Apple app store



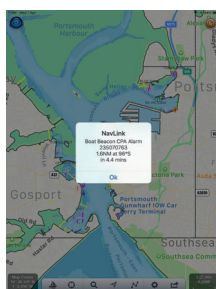
Device can be used in landscape or portrait mode for best possible chart presentation. Drill down on nav aids, AIS targets and buoys for data

data. There are CPA (closest point of approach) and TCPA target displays and alarms too. The user interface features large touch screen icons for quick route building, bearing and distance measurements and enabling nav mode. If NMEA wind data is available, there are instrument displays of true and apparent wind.

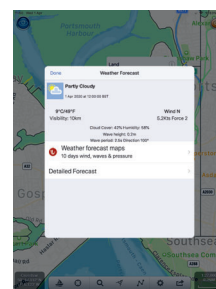
NavLINK HD is available to download today from the Apple app store



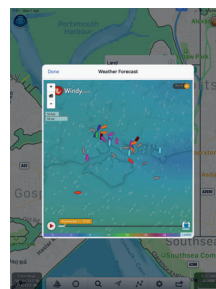
Detailed charts with an AIS target overlay



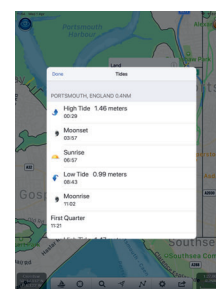
CPA & TCPA calculations and alarms



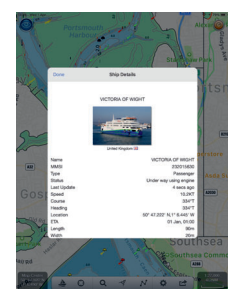
Detailed weather from Windy subscription



Animated wind displays with AIS



Tidal data plus moon and sunset times



Vessel pictures requires internet connection



Latest tech news, product information and industry ideas...

Take a look at the contents section of our newsfeed site below. Find up to date app interfacing ideas, connection data and schedules for our products with 3rd party systems and industry ideas. It's a great resource and available now for FREE!

www.digitalyacht.net

Search Digital Yacht on line for your local website PLUS follow our daily newsfeed and blog at www.digitalyacht.net

www.digitalyacht.co.uk www.digitalyachtamerica.com

Follow us:



Digital Yacht



@DigitalYacht



Digital Yacht Limited



digitalyacht

TEL + 44 1179 55 44 74 US Office 978 277 1234