



LANLink

NMEA TO Ethernet Gateway

(Available in NMEA 0183 and NMEA 2000 Variants)

New Product Introduction



Part Number: ZDIGLANLINK

NMEA 0183 TO ETHERNET GATEWAY (SRP \$199.95)

Part Number: ZDIGLANLN2K

NMEA 2000 TO ETHERNET GATEWAY (SRP \$299.95)

www.digitalyachtamerica.com Availability: January 2021

LANLink - Outline

Dear Partner

More and more boats now have a wireless router fitted or utilise devices like our 4G Connect for internet connectivity. LANLink is a NMEA to ethernet gateway which enables the boat's NMEA data to integrate onto the router network - allowing connected devices and apps to take advantage of the data.



LANLink is available in two versions suitable for NMEA 0183 and NMEA 2000 respectively. It features an easy to use web interface allowing any device with a browser to configure NMEA baud rates and IP/Port information.

It can support multiple TCP/IP connections and is bi-directional. Once connected to the onboard network via a simple CAT 5/6 patch cable, you can setup apps like TZ iBoat, iNavX, NavLink, iSailor, Imray, Weather 4D etc by simply entering the IP address and port for streaming NMEA data.

The Digital Yacht team

+ 44 1179 554474

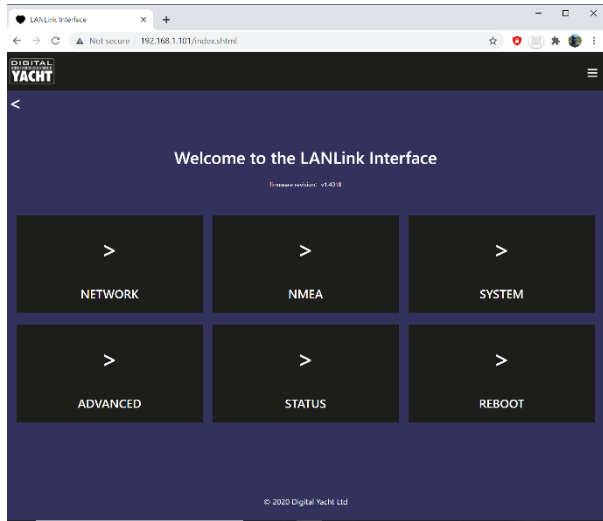
US 978 277 1234

LANLink - Features

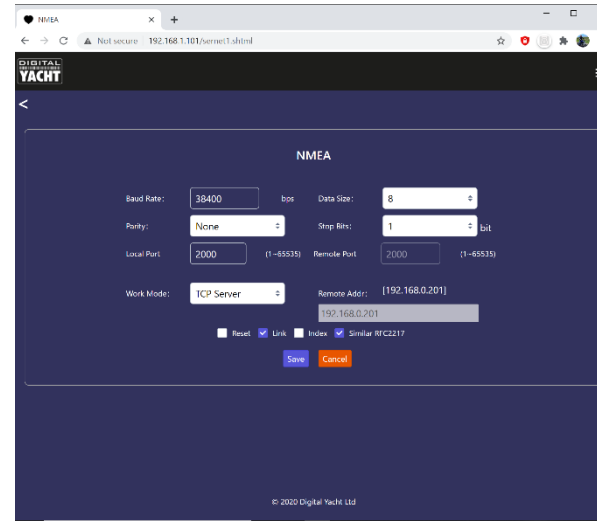
- Available in two versions
 - ZDIGLANLINK - NMEA0183 TO ETHERNET GATEWAY
 - ZDIGLANLINKN2K - NMEA 2000 TO ETHERNET GATEWAY
- 12/24v DC low power operation
- Connects to router or devices via simple RJ45 Cat 5/6 patch cable connection
- Web user interface for easy setup from connected device via browser
- TCP/IP or UDP connection modes – support for up to 5 connected devices with TCP/IP
- Bi-Directional
- NMEA 2000 variant can offer raw mode with encapsulated PGNs or conversion mode (for apps) supporting AIS, instruments and GPS
- RS232 port for PC apps too
- Status indicators for power, data in-out, network link and server status



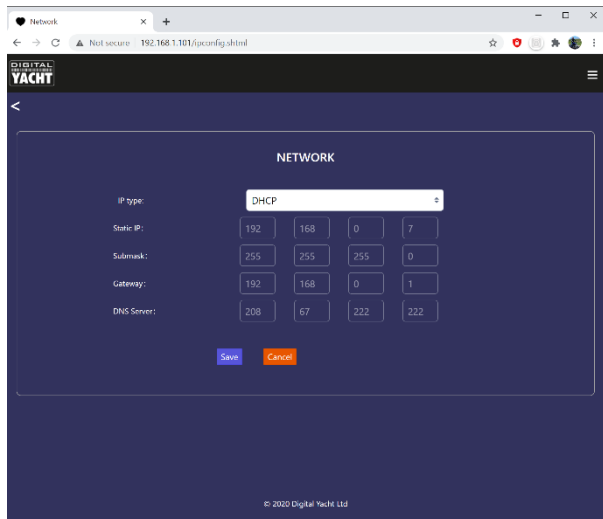
LANLink - SetUp



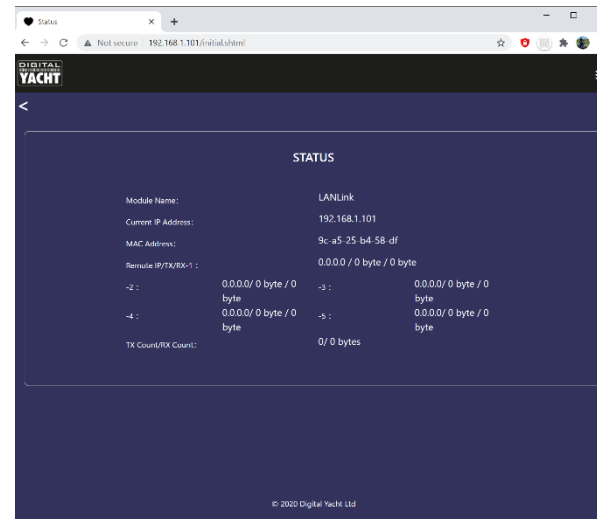
Easy menu driven web UI accessible via web browser on client device with no complicated software to install for setup



Configure NMEA data for 4800 or 38400 baud and set mode (TCP/IP or UDP) and port

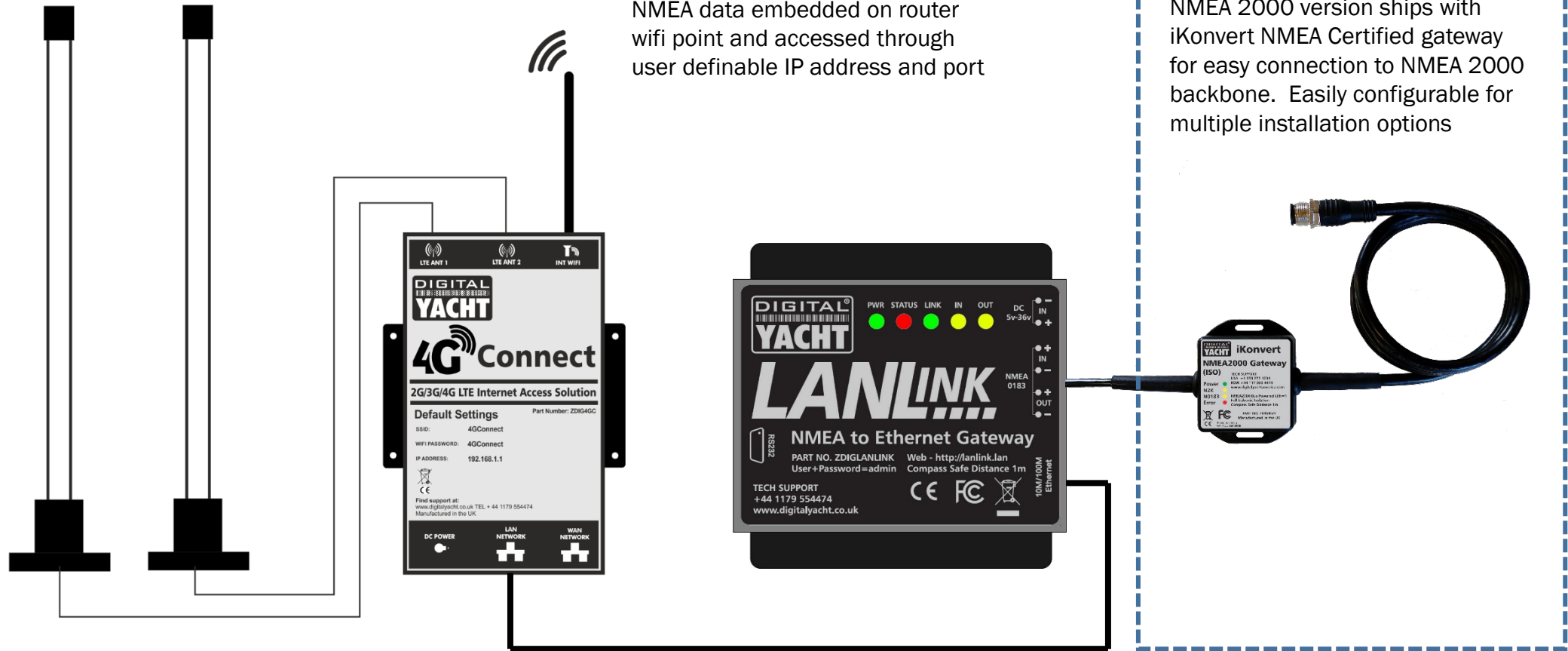


Set up with fixed or dynamic IP address



Status page for system diagnostics

LANLink – Typical System



NMEA data embedded on router wifi point and accessed through user definable IP address and port

NMEA 2000 version ships with iKonvert NMEA Certified gateway for easy connection to NMEA 2000 backbone. Easily configurable for multiple installation options

Simple ethernet patch cable connection to router

LANLink - Specifications

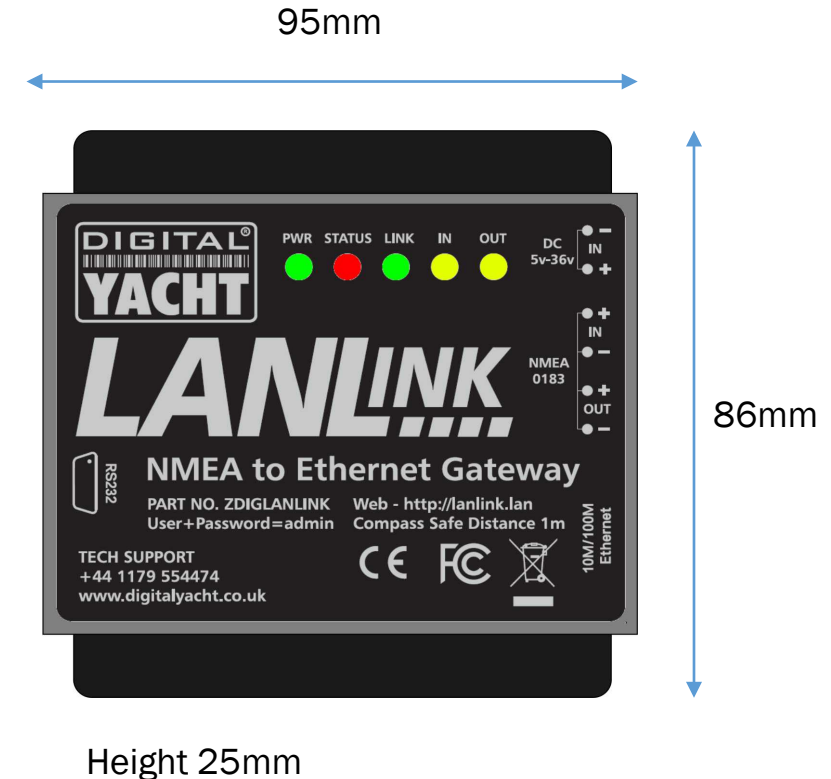
| Feature | |
|----------------|---|
| Power | 10-35V DC (Consumption approx. 50mA at 12V DC) |
| Network Port | Ethernet RJ45 10/100MB |
| IP Mode | Static or DHCP |
| Operating Mode | *TCP/IP or UDP Support for up to 5 connected devices in TCP/IP mode * Recommended mode of operation |
| NMEA Input | Configurable 4800 or 38400 baud (NMEA 0183) NMEA 2000 option via iKonvert gateway |
| Operating temp | -25 to +70 C |
| LED Indicators | Power - Status - Link - Data In - Data Out |
| Options | RS232 connectivity (non concurrent with NMEA) |

Ordering information
ZDIGLANLINK
UPC 703791696239

LANLINK NMEA 0183 TO ETHERNET GATEWAY

ZDIGLANLN2K
UPC 703791696246

LANLINK NMEA 2000 TO ETHERNET GATEWAY



Packaging dimensions: 18 x 14.5 x 4 cm