



SAILBOAT



MOTORBOAT



SUPERYACHT



WORKBOAT



SPORT FISHING



COMMERCIAL FISHING

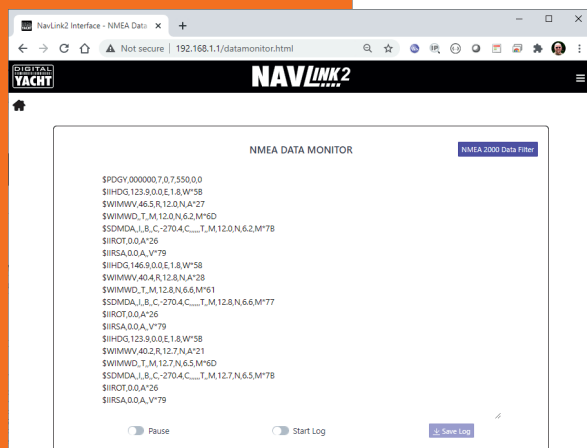
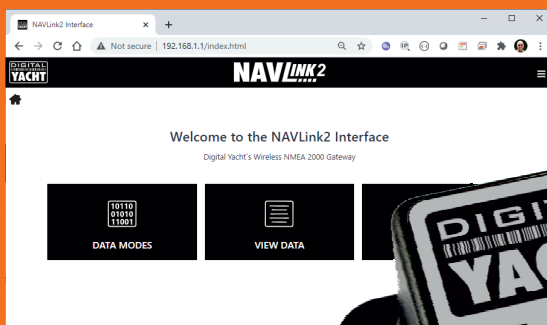
Follow our newsfeed at [www.digitalyacht.net](http://www.digitalyacht.net)

# Product Update

## NAVLink Gets A Software Upgrade

We've added extra functionality to NAVLink, our NMEA 2000 to wifi gateway, allowing easier setup with apps on tablets, iPads and PCs

Find out more inside...



# DIGITAL YACHT

## February 2021

Product Update! New software and functionality for NAVLink NMEA 2000 wireless gateway System Solution! Aqua PCs with TimeZero charting software & Furuno radar integration  
Product Spares! MA800 GPS antenna & an AC adaptor for our DTV100  
Installer training! We sent two dev engineers on a NMEA 2000 installer's course - what happened?

**Stay Safe! We're Open & Working Safely Despite The Covid Pandemic**



# NAVLink NMEA 2000 Gateway

## New Features & Functions

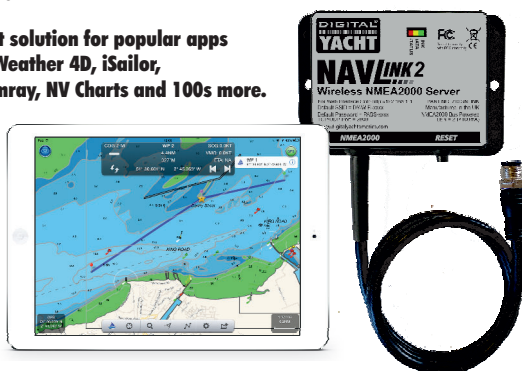
### Extra functionality for our NMEA 2000 to Wireless gateway

NavLink2 is an easy to fit NMEA 2000 to Wifi gateway designed to take NMEA 2000 data and make it useable within apps on smart-phones, tablets, iPads and PCs.

Installation takes seconds being self-powered from the NMEA 2000 backbone. It creates a secure, password protected wifi network and streams the data across to your favourite apps. Access the menu by simply entering the IP address into any connected device's web browser. We've made some great new additions to functionality and the good news is that older units can be easily upgraded.

**NAVLink is the perfect solution for popular apps including Navionics, Weather 4D, iSailor, TimeZero, SailGrib, Imray, NV Charts and 100s more.**

Check [www.digitalyacht.net](http://www.digitalyacht.net) for the latest app reviews and tests



You can now filter the NMEA data and ignore specific NMEA sentences which may create conflicts with some apps or software. You can also choose specific modes of operation. For instance, you can choose the AIS ONLY mode to just send AIS and GPS data to get better results with an app that can only accept AIS & GPS data, such as Navionics.

The data monitor has also been improved and it is now easy to save a file of data on your connected device. This is ideal for logging, support and post processing/analysis.

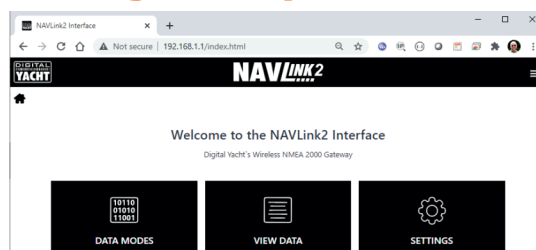
You can also choose to join Navlink to an existing wireless network (for instance, 4G Connect) so you have just one wifi network on the boat containing all your NMEA and internet data. It also supports an optional RAW mode where native NMEA 2000 PGNs are encapsulated and sent across - ideal for developers, Signal K applications and advanced interfacing.

**Click to watch the video**



**Access features through the web interface on any connected device**

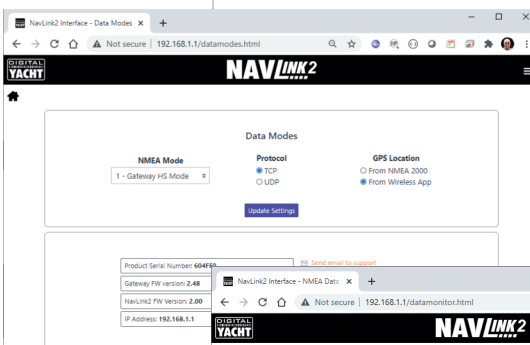
**New menu driven interface for super simple set up**



**Choose TCP/IP or UDP connectivity**

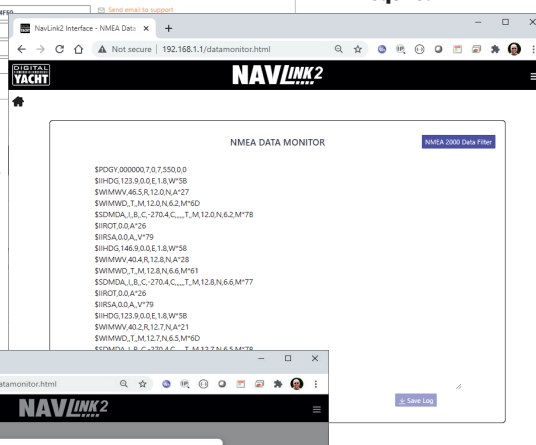
**Create a custom SSID and a secure, memorable password**

**NAVLink can also join another wifi network if required**

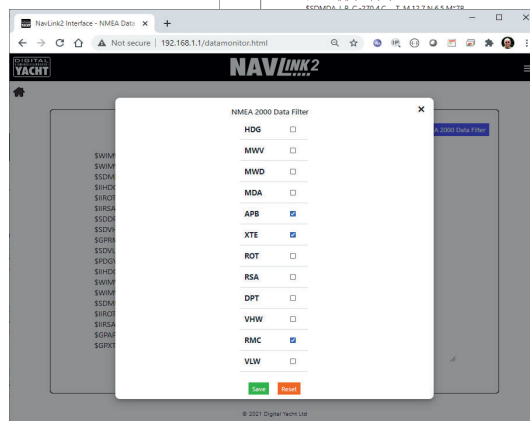


**View data on the network either as raw PGNs or NMEA 0183 translations**

**Save and log data too**



**Filter individual NMEA sentences - useful to maximise app compatibility and prevent app overload of non relevant data**







# TimeZero PC Navigation Digital Yacht PC Solutions

Note:  
Now with radar!

## A great new solution for sophisticated PC navigation now with radar too

TimeZero PC navigation software brings sophisticated navigation to reality with radar and MARPA integration, multiple chart formats and even cloud based syncing of user data to the TimeZero iPad app for the ultimate integrated system. Digital Yacht Aqua PCs, sensors, NMEA interfaces and wireless gateways are the perfect hardware partner plus we now offer radar integration with the latest Furuno DRS4D NXT digital doppler radars. Our solution here integrates NMEA 2000 AIS, GPS and instrument data with TimeZero Professional software creating a 23.5" multi function system with options for up to 3 displays.

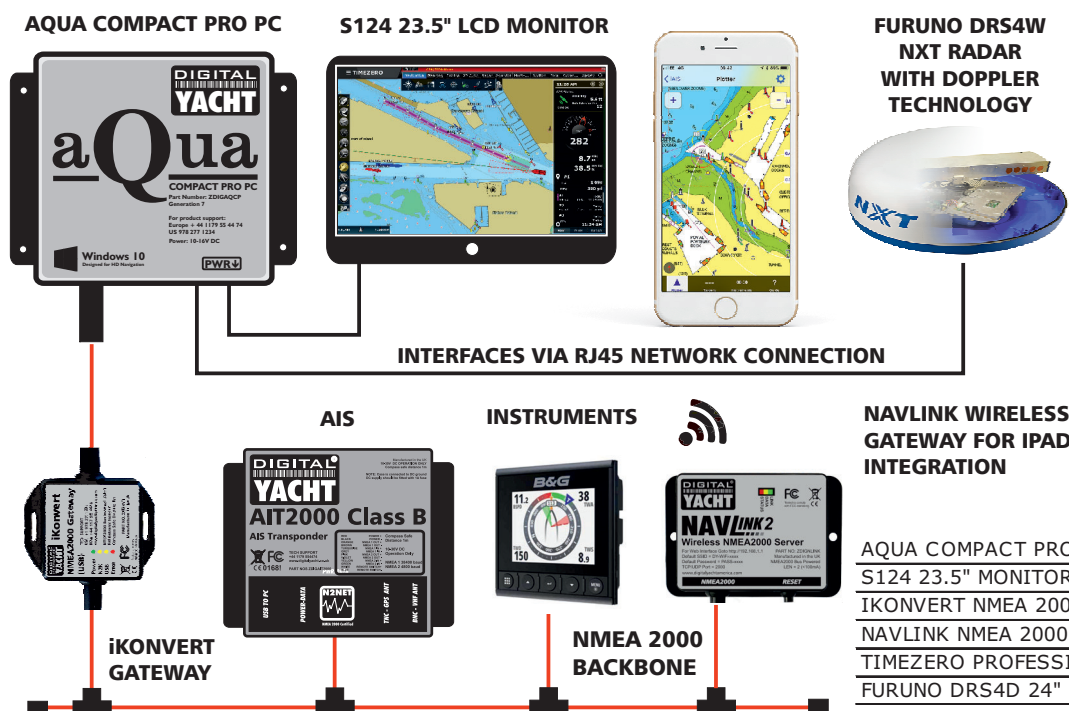
This really is next generation navigation at a remarkable affordable price...

## System Concept

The hub of the system is the Aqua Compact Pro PC connected to the NMEA 2000 network using Digital Yacht's iKonvert USB gateway. AIS, GPS and instrument data (from the NMEA 2000 backbone) is made available with the bi-directional iKonvert interface to the TimeZero software application. The choice of sensors is open from a simple depth, speed and temperature transducer like our DST810 or a separate range of proprietary instruments such as those from B&G, Garmin or Raymarine.



Support for up to three monitors



Digital Yacht AIS products integrate onto the NMEA 2000 backbone. Radar data is connected directly to the PC via a fast RJ45 network interface. The latest DRS4D series radars are available as radome or open array antennas and have doppler technology for super fast target acquisition and colour coded tracking.

NavLink, connected to the NMEA 2000 backbone provides a wireless feed of data to independent iPads or tablets. iPads running the TimeZero app can also sync user data such as marks and waypoints across the cloud. Every system can be tailored and customised so call for your quote, but here's a quick shopping list (£ ex vat):

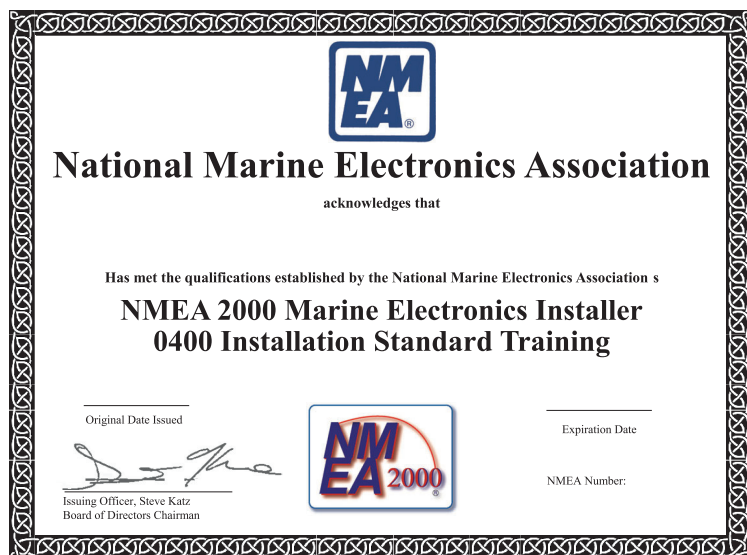
AQUA COMPACT PRO PLUS PC	975.00
S124 23.5" MONITOR	695.00
IKONVERT NMEA 2000 USB INTERFACE	120.00
NAVLINK NMEA 2000 WIRELESS GATEWAY	175.00
TIMEZERO PROFESSIONAL (WITH RADAR LICENCE)	1200.00
FURUNO DRS4D 24" RADOME WITH 15M CABLE	2060.00



# Digital Yacht take NMEA Training

## How our engineers benefit

### NMEA installation training benefits even seasoned developers



The NMEA (National Marine Electronics Association) is the industry body that develops NMEA standards and offers a wide variety of industry training for installation engineers and technicians. Covid has, of course, disrupted many education courses and training with physical contact is limited and events cancelled. The NMEA moved fast to develop virtual training and examinations and Digital Yacht took the opportunity to send two of our development engineers on the NMEA 2000 installation course.

These guys spend their daily lives involved in detailed software and hardware development and have intricate knowledge of Canbus based systems but as the old saying goes: "a product is only as good as its quality of installation"

This NMEA 2000 course topics cover cables, connectors, specifications, physical planning and documentation, power sources and distribution, voltage drop calculations, data messages (parameter group numbers), connecting to other data sources, network setup and troubleshooting.

We're pleased to say both of them passed and two new certificates decorate their workspace but importantly, the course will help with our product development, making products easier to install.

We'd recommend product training for all our dealers and installers. Check out the NMEA website at [www.nmea.org](http://www.nmea.org) and see the range of virtual training courses on offer appropriate for your needs. Some are also delivered in conjunction with local partners like the British Marine Electronics Association.

### TV Onboard With the DTV100

Our DTV100 TV antenna has been popular for those taking to their boat during the Covid restrictions and wanting to keep up with regular TV programs and the news. However, many users have wanted a quick install without connecting to the boat's DC system so we've introduced a simple AC-DC adaptor to power the antenna system from the same AC supply as the TV. Part number is ZDIGDTVAC and it's available now.



**The DTV100 is a great solution for terrestrial TV reception onboard**  
**We now offer an AC option for super simple installation**

### Time for service - Replacing a GPS antenna

All our AIT transponders feature a dedicated, internal GPS and this is part of the AIS specifications and regulations. You can't utilise an external NMEA GPS source on a Class B AIS. The transponder validates its correct GPS fix prior to making a transmission and will alert if that's not available.



Most of our transponders utilise an external GPS antenna which has to survive the elements. Normally fitted on the push-pit rail, they often become a hand hold or target for a stray sheet rope and require replacement! We delivered our 1st transponders over 10 years ago so its worth checking the condition of the antenna before spring relaunch.

Luckily we have a low cost universal replacement - the MA800. It ships with a 10m coax cable fitted with a slim FME adaptor to allow easy cable runs and we supply a TNC adaptor to fit all our transponders. We recommend replacing the cable too as coax cables degrade over time and the FME connector allows for an easy cable run. Just search MA800 on our websites.





[www.digitalyachtamerica.com](http://www.digitalyachtamerica.com)

[www.digitalyacht.de](http://www.digitalyacht.de)

[www.digitalyacht.es](http://www.digitalyacht.es)

[www.digitalyacht.fr](http://www.digitalyacht.fr)

[www.digitalyacht.co.uk](http://www.digitalyacht.co.uk)

[www.digitalyacht.eu.com](http://www.digitalyacht.eu.com)

[www.digitalyacht.ca](http://www.digitalyacht.ca)

[www.digitalyacht.lat](http://www.digitalyacht.lat)



**Our blog with latest tech news,  
product information and industry ideas...**

Take a look at the contents section of our newsfeed site below. Find up to date app interfacing ideas, connection data and schedules for our products with 3rd party systems and industry ideas. It's a great resource and available now for FREE!

[www.digitalyacht.net](http://www.digitalyacht.net)

**Follow us:**



Digital Yacht



@DigitalYacht



Digital Yacht Limited



digitalyacht

**TEL +44 1 179 55 44 74 US +1 978 277 1234 EU +33 170 70 92 50**