



Follow our daily newsfeed at www.digitalyacht.net

Note:
Now with radar
options!



Digital Yacht & TimeZero Marine Navigation PC Solutions

TimeZero PC navigation software brings sophisticated navigation to reality with radar and MARPA integration, multiple chart formats and even cloud based syncing of user data to the TZ iBoat iPad app for the ultimate integrated system. Digital Yacht Aqua PCs, sensors, NMEA interfaces and wireless gateways are the perfect hardware partner plus we now offer radar integration with the latest Furuno DRS4D NXT digital doppler radars.

Our solution here integrates NMEA 2000 AIS, GPS and instrument data with TimeZero Professional software creating a 23.5" multi function system with options for up to 3 displays.

This really is next generation navigation at a remarkable affordable price...



**Aqua Compact Pro
PC with S124 23.5"
monitor**

PC Solutions 2021

- Sophisticated PC chart plotter solutions and now with latest doppler radar integration
- Multiple chart option formats - C-Map, Navionics and MapMedia give choice and global coverage
- Intelligent AIS and instruments displays
- NMEA 0183 and NMEA 2000 interfacing options with wireless interface for iPads and tablets too
- Multiple display options - support for up to 3 monitors
- Remarkably affordable

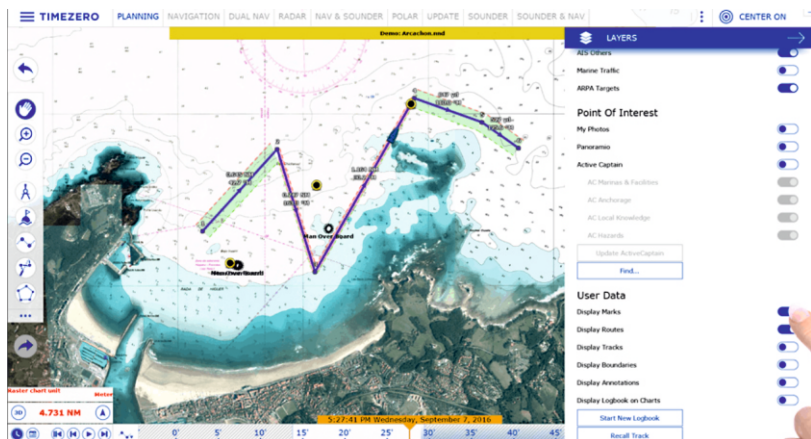
Next Generation Navigation From Digital Yacht

TimeZero PC Navigation Software Overview

A PC based navigation system offers great value and sophistication compared with a traditional multi function plotter. This flexible platform allows for multiple applications to run so you can choose your PC charting software for your own specific needs and have the flexibility of upgrading in the future.

Digital Yacht Aqua PCs are the ideal marine PC hardware platform - super reliable, DC powered and ultra compact, they utilise the latest Intel processors and have excellent connectivity options through our NMEA 0183/2000 and wireless interfaces. Easy to use Windows 10 is also pre-installed.

TimeZero is a full featured chart navigation application with AIS and radar integration. It's our choice of "Premium" application for our hardware. TZ Navigator will suit most recreational users with an option to add a radar licence if required. TZ professional includes this functionality and more including sonar and bathymetry options.



**Photo fusion layers a satellite overlay onto the maritime charts
Easily build routes and even export to the cloud**



**Full screen or split screen radar option
Compatible with Furuno's latest DRS doppler radars**



Advanced AIS displays with CPA and TCPA alarms

TZ Navigator

Sophisticated navigation software with advanced navigation and AIS capabilities and wide choice of charting formats. Choose from MapMedia for predominately raster based charting from official ENC's, C-Map or Navionics charts. This bundle (UK & EU) includes 1 Wide chart region of your choice. When you place your order, we will contact you to confirm region and type. Charts can be viewed at www.maxsea.com. We have different packages for our US Customers through our US office.

Timezero Navigator is ideal for use on the Aqua Compact Pro and Pro Plus systems. It's fully compatible with Windows 10 and also with our iKonvert USB-NMEA 2000 gateway, USB-NMEA 0183 adaptor and NavLink wireless gateways. It also supports an autopilot output via our USB-NMEA 0183 adaptor. Create marks, waypoints, routes, boundaries, lines, annotations & even add a photo as user objects. Waypoints and routes can also be sync'd across the cloud and used in the TZ iBoat iOS app for an integrated tablet and PC solution. Full AIS display capability with CPA/TCPA alarms and target list and integration with internet AIS like Marine Traffic if an internet connection is available. Download weather for an animated display layered onto chart with wind, temp, pressure and wave information.

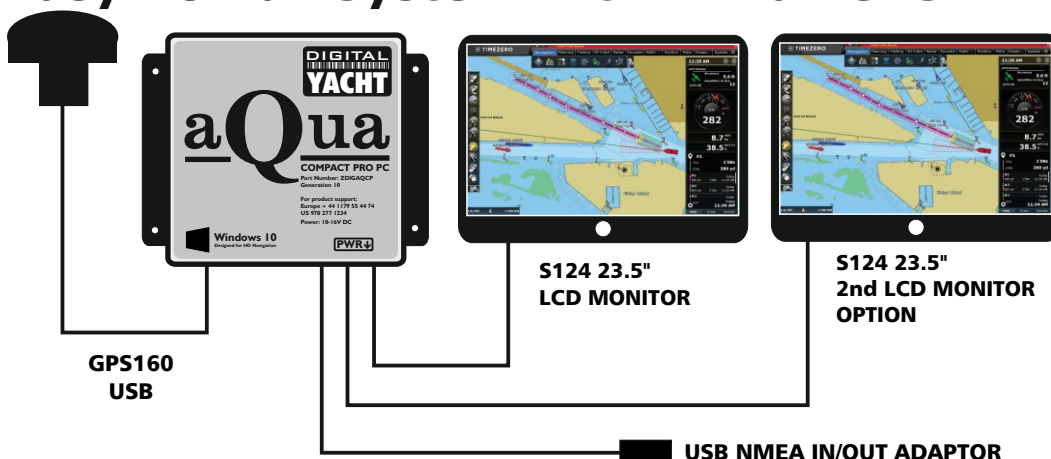
Options include Radar Module (compatible with new Furuno DRS4DNXT radars), Sounder Module and Weather Routing Module. The Weather Routing Module is ideal for long distance sailors and provides routing according to wind, waves and currents with isochrones overlay. Routing calculation automatically avoiding the coastline and shallow water (with possibility to set the depth limit), dual route calculation sail/motor (depending on the wind and theoretical speed limit) and expected wind conditions display along the track.

Delivered as a digital download or pre-installed on our Aqua PCs, it comes with a licence for up to 2 PCs.

TZ Professional

TZ Professional is delivered as a single user licence (for 1 PC) and has the radar unlock included. TZ Professional has additional features to suit workboat, fishing and commercial users such as extended alarms and guard zones, S57 ENC charting options, IP and Flir camera support, SAR routing patterns, multiple data layers and sophisticated bathymetry capability with PBG and 3D Sonar modules and external equipment. Please contact us for more information and a custom quote.

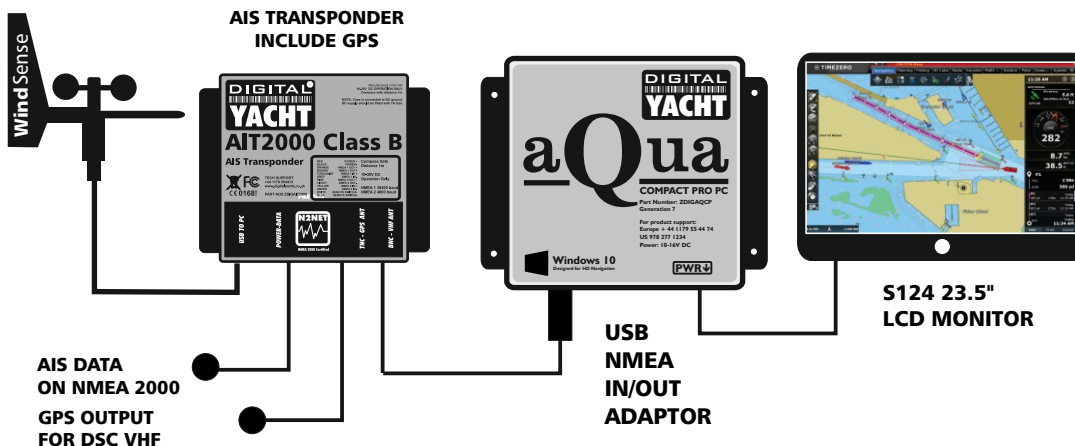
Easy PC Nav System with TriNav GPS



Digital Yacht's latest Aqua Compact Pro PC brings affordable and reliable PC based navigation to boats. With low power, DC operation, it boasts the latest Intel 10th generation technology - built in wifi and bluetooth and a solid state hard drive with 8GB RAM.

TimeZero navigation software utilising C-Map, Navionics or MapMedia charting can be preloaded for a sophisticated yet simple to use chart plotter system with 23.5" display (17" option also available). The GPS160 TriNav sensor provides GPS, GALILEO & GLONAS positioning inputs with typical sub 1m accuracy. Additional NMEA devices can connect via the USB NMEA adaptor.

PC Nav System with GPS, Wind & AIS Class B Transponder



This system builds on the basic package and includes AIS (Class B transponder) plus a WND100 wind transducer integrated for wind speed and direction information.

TimeZero software offers an advanced AIS display with colour coded targets and alarms for CPA and TCPA plus instrument displays too.

The AIT2000 allows interfacing to traditional chart plotters with a NMEA 0183 and NMEA 2000 interface. There is also a GPS NMEA output for DSC VHF's. GPS positioning data comes from the AIS transponder. Second monitor option also available.

PC Nav System For NMEA 2000 Systems



This system integrates the Aqua PC with a NMEA 2000 network using Digital Yacht's iKonvert USB gateway. AIS, GPS and instrument NMEA 2000 data is made available with a bi-directional interface to the PC software application.

This is a popular option - it allows a small waterproof plotter to be mounted in the cockpit or flybridge and a full function PC system below deck. NavLink provides a wireless feed of NMEA 2000 data to independent iPads or tablets. TZ Software supports cloud syncing of waypoints, route and user data so the iPad app can share data with TZ on the PC too.

The AIT2500 utilises the latest Class B+ transponder technology.

Aqua Compact Pro Plus Furuno DRS-NXT Radar



Choose from
either i3 or i7
processor

Systems now available
in either 12 or 24V

Space is always at a premium on board and despite its slim line 11.5 x 11 x 5 cm dimensions, the Aqua PC packs in a powerful 10th generation Intel Core i3 processor with exceptional graphics performance for the latest 3D charting and HD navigation capability from TZ.

Its fitted with 8GB ram and has plenty of connectivity with built in wifi, blue tooth and an SD Card reader plus 4 x USB 3 sockets. There's a rugged, solid state 240GB hard drive and a HDMI video output as well as a USB C connector for 2nd and 3rd monitors if required. The Furuno radar connects direct to the RJ45 network port.

Also available is the i7 based Compact Pro Plus - this is recommended for 3D bathy and sonar systems.

Furuno DRS-NXT radars utilise the latest solid state, digital, doppler technology. Available in radome (24") and open array (3.5, 4 and 6ft) versions, these are our choice of radar for integration with TZ Software. Simply connect to the network port on the Aqua Compact PC.

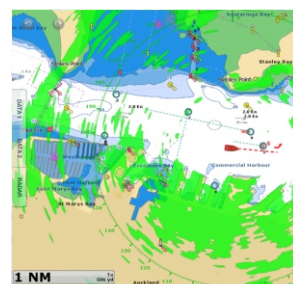


Advantages of PC Navigation?

It's not just great value and cost savings that a PC can offer but a lot more sophistication too. With a PC, you can easily update as new software and applications become available and you're not locked in a proprietary MFD solution - pick and choose the best charts for your cruising area and needs.

With Digital Yacht NMEA and wireless interfaces you can also integrate across all NMEA platforms and incorporate iPads and tablets to the solution. PCs are also internet ready so chart updates, system updates, weather and communications become part of your navigation solution. You can also choose how you interface with a PC too - mouse, trackball, touchscreen and keyboard are all options for a personal solution. There's also the option of a hybrid solution with small screen MFD and large screen PC and Digital Yacht make this integration possible.

Radar and chart overlays are supported and work well with our HSC100 high speed compass integrated via NMEA 0183 or NMEA 2000 to the PC



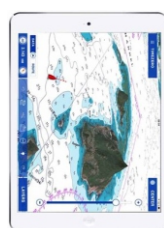
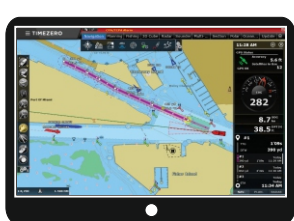
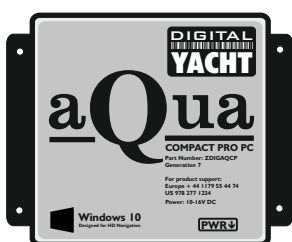
Welcome to next generation navigation.

PC Nav System With Radar & NMEA 2000 Integration

AQUA COMPACT PRO PC

S124 23.5" LCD MONITOR

FURUNO DRS4D
NXT RADAR
WITH DOPPLER
TECHNOLOGY



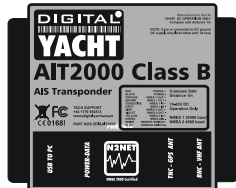
INTERFACES VIA RJ45 NETWORK CONNECTION

AIS choose from
AIT2000/2500/5000

INSTRUMENTS

NAVINK WIRELESS
GATEWAY FOR IPAD
INTEGRATION

HSC100
COMPASS WITH
NMEA 2000
INTERFACE



iKONVERT
GATEWAY

NMEA 2000
BACKBONE

This system integrates a Furuno DRS4D NXT radar into the system. It connects via a high speed network interface on the Aqua Compact Pro PC. This is a radome antenna but open array options are also available. Features like radar overlay, dual range radar, doppler colour coded target tracking and AIS overlays are all available in the TZ application.

NMEA 2000 instrument, AIS and GPS data is connected via the iKonvert USB gateway and our HSC100 high speed compass is connected onto the network to optimise radar performance in tracking and course up modes. TZ Navigator requires the radar option/licence (standard in Professional version).

The AIT2500 and AIT5000 AIS transponders utilise the latest Class B+ technology.