

ENGINE LINK

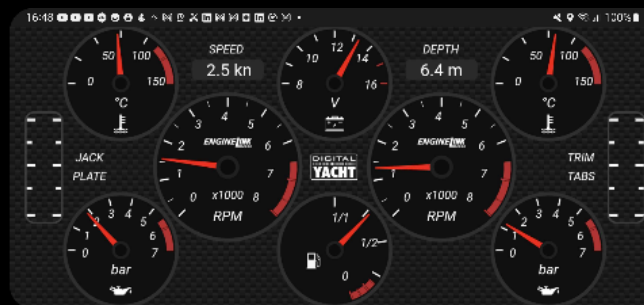


New Product Introduction Dealer Information

NMEA 2000 Wireless Engine Interface

Part Number: ZDIGELINK
UPC: 703791696437
Price: \$279.95
Availability: March 2023

TEL: 978 277 1234
www.digitalyachtamerica.com



ENGINELink

Digital Yacht's new ENGINELink interface is an NMEA 2000 wireless device that allows mobile phones, iPads and tablets to display engine data as well as providing a link to boat AIS, depth and GPS information for popular apps such as Navionics, NavLink, iNavX, SavyNavy, AquaMaps and 100's more. Now boaters can have boat engine data plus their favourite charting app displayed on their mobiles and tablets in real time.

Engine information such as RPM, temperature, pressure and battery voltage are displayed as an attractive dashboard display through the web browser so there's no need for a custom app. Setup and installation is easy. Just "T" into the boat's NMEA 2000 backbone and ENGINELink is self powered from the network. It creates a secure, password protected local wifi network with up to 7 devices able to connect simultaneously. UDP and TCP-IP protocols are supported for compatibility with 3rd party apps.

Either single or dual engine installations are supported. If the vessel is fitted with NMEA 2000 compatible trim tabs or jack plates, then the status of these performance critical systems is also displayed on the dashboard.

You can configure ENGINELink through its own simple web interface - just open your web browser, enter its IP address and you'll access the attractive dash to display and configure your gauges. No complicated programming software or app is required. iOS and Android devices can display a navigation app and a web browser side by side - so you can have your favourite charting app open alongside engine instrument displays.

You can change the network name & password and even merge the wifi to an existing wifi network on board. NMEA 2000 data can be viewed and logged in the web browser allowing for easy fault finding of issues. If the engine generates diagnostic alerts then these can be displayed and interrogated too.



“Connect to the boat’s NMEA 2000 engine and navigation network and transform your mobile device to a full function engine display and support navigation apps too with realtime AIS, GPS and depth data”

ENGINELink – Key Features

ENGINELink functionality includes:

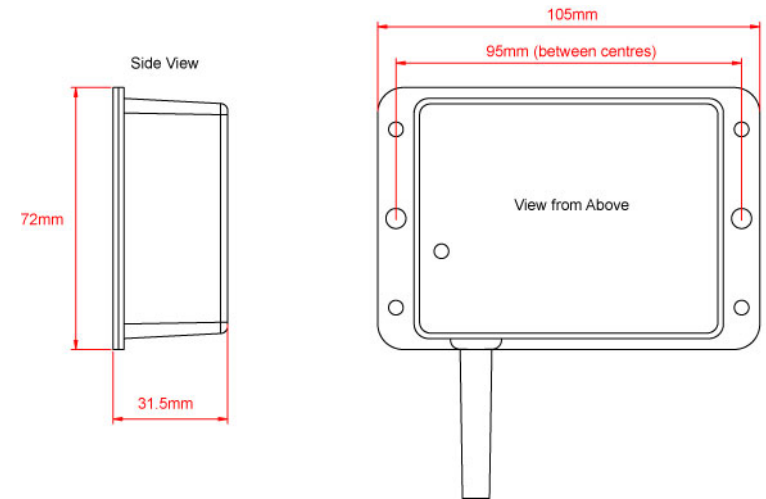
- Connect to any NMEA 2000 ready engine or network
- Built in web gauge display – no app needed
- Display single or dual engine gauges
- Configurable gauges – choose the parameters you want to monitor
- Set alarm/alert thresholds and view diagnostics
- TCP/UDP streaming of navigation data (GPS/AIS/Depth) for popular navigation apps
- Tank levels, fuel flow and trip computer type displays
- Tilt, trim-tabs and jack plate support
- Manufacturer specific engine modes



“Just connect and open the mobile device web browser to view live engine data gauges”

Specification

- Powered from NMEA 2000 Network – fits in seconds
- Password protected wireless interface 802.11b/g/n
- AP or STA mode (can join another boat wifi network)
- TCP/UDP streaming of navigation data (AIS, GPS and depth) to popular apps like Navionics, TZ, AquaMaps, iNavX etc
- Supported PGNs (1st Release)
127488, 127489, 127493, 130312, 130316, 127505, 130576, 128780
- Preset gauge displays for leading manufacturers or customize your display
- Flexible, upgradeable interface



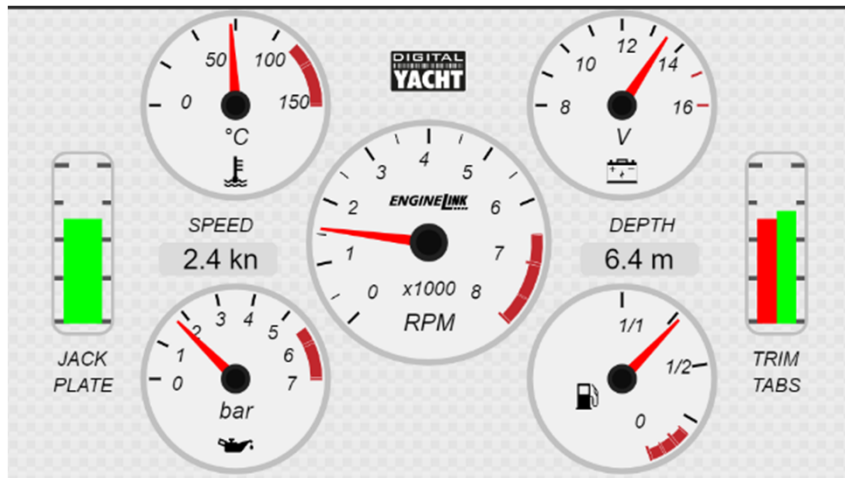
Target Markets and Applications

- Brings boat engine data to mobile devices
- Primarily aimed at the US center console and sports fishing market where outboard powered craft have NMEA 2000 networks with engine data available but will work with any NMEA 2000 ready engine installation – inboard or outboard
- Provides additional data displays and extra functionality than MFDs
- Low cost dashboard repeater and accessible anywhere onboard
- Ideal test tool for service technicians
- Will be at the leading edge of electric propulsion PGN implementation
- Logging and replay of data for onshore analysis
- Support for the latest jack plate and trim tab PGNs, for optimising boat performance
- Connects to Navionics app (and 100s more) for AIS, GPS and depth data

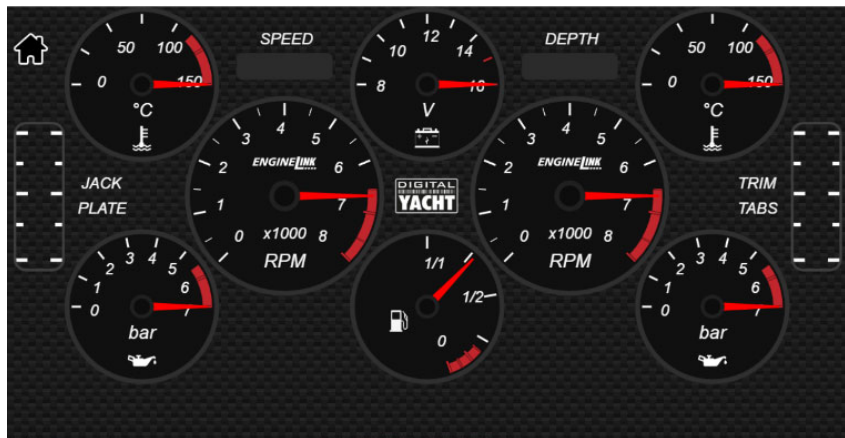
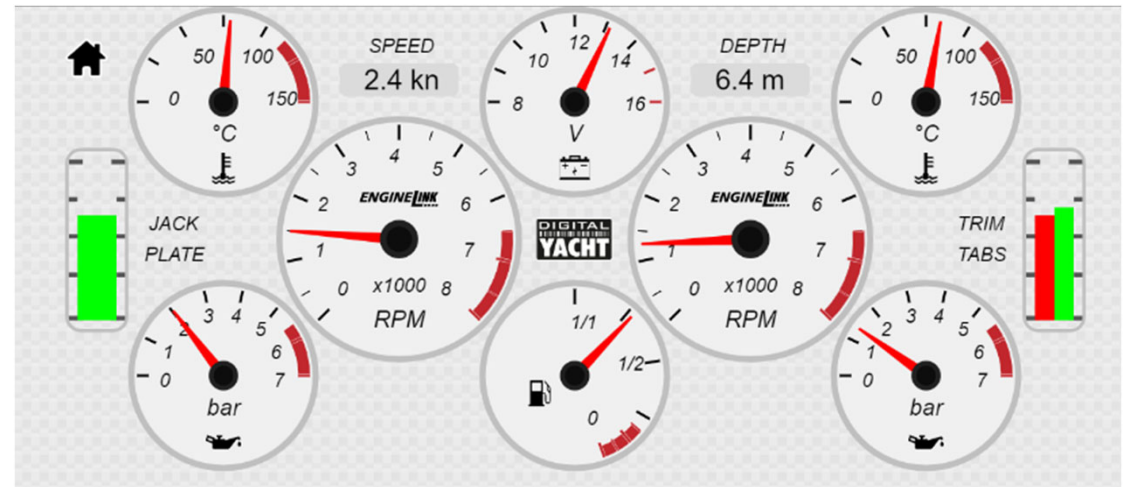


Simple but effective web interface

Single Engine Dashboard

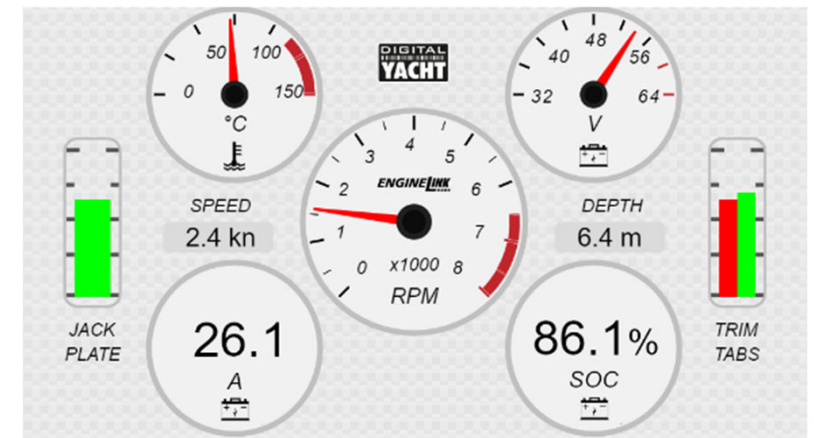


Dual Engine Dashboard

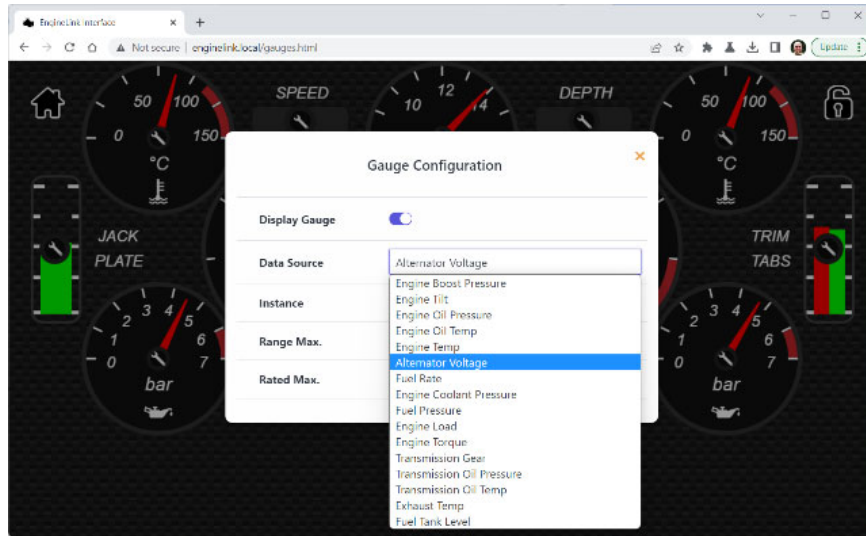


Dark mode for
night operation

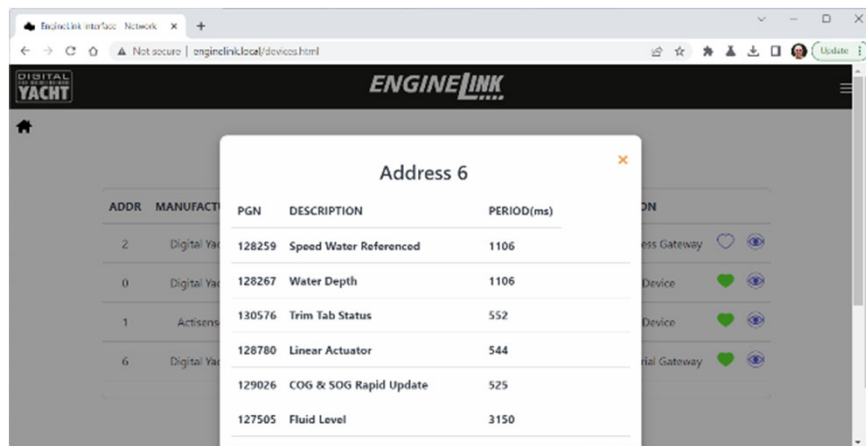
Dedicated mode for
electric engines with
state of charge and
consumption



Features

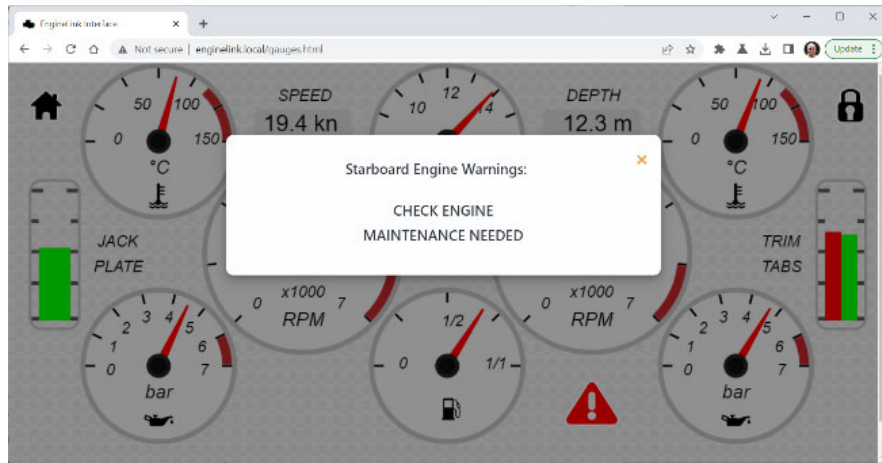


“Unlock” the page to configuration mode and change a gauge or digital display for the parameter required

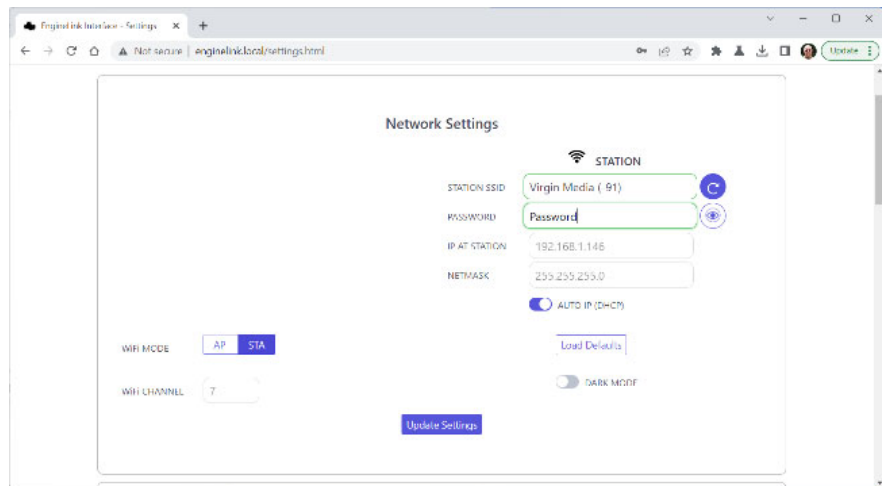


Diagnostics mode shows available NMEA 2000 data, PGNs and information

Features



← Support for diagnostics and alerts if available – pop up alerts of critical issues. Logging of data for diagnostics



← Choose from access point or station mode wireless operation – join another network on board if available or have as stand alone system. Password protected wireless security.

Ordering Information

ENGINELink	Description
Manufacturer Description Part Number	DIGITAL YACHT ENGINELINK NMEA 2000 WIRELESS ENGINE INTERFACE ZDIGELINK
UPC	703791696437
Price (US Market)	\$279.95
Shipping weight	<0.5kg