

DIGITAL
DEEP SEA



5G Xtream

Product Introduction

5G Xtream
Part Number: ZDIG5GX-US
UPC: 703791696659
SRP \$2295

5G Xtream 4G/5G Ultra-Fast Internet Access Afloat & With Starlink Integration

January 2024 Digital Yacht America

Tel 978 277 1234 www.digitallyachtamerica.com

Introduction



“The 5G Xtream offers ultra fast connectivity up to 3.1GBs and is supplied with three external antennas for optimal performance”

For boat owners looking for ultra-fast internet on board, the new 5G Xtream from Digital Yacht offers 4G and 5G connectivity as well as integration with Starlink satellite systems for the best and affordable blended internet afloat.

The 5G Xtream can support 5G (shoreside) connection speeds up to 3.1GBs but also integrates a 4G Cat 20 modem which offers connectivity up to about 25NM from shore at speeds of up to 2GBs. The system uses three external antennas with dual high gain vertical antennas and a separate compact dome for the higher 5G frequencies. This MIMO technology and critically, separate antennas, gives optimum performance. There’s support for dual SIMs with auto (failover) or manual switching between operators.

The 5G Xtream features dual band (2.4 & 5GHz) wireless connections so users on board simply search for the secure wifi point and connect. There’s also 4 LAN ports (10/100/1000MBs) for wired devices like Smart TVs and a WAN port which is optimised for Starlink satellite connectivity allowing the 5GX to act as a sophisticated and fast router for all on board internet communications. The wifi router can also be configured to access marina wifi hotspots as an additional method of internet access. This also supports the very latest 5GHz marina wifi services and there’s a high gain external wifi antenna also available as an accessory.

For advanced users, the 5G Xtream allows for user management, VPNs, blacklists and IOT applications. NMEA 0183/2000 data can also be connected using Digital Yacht’s LANLink devices. The integrated GPS allows for SMS reporting of boat position or even a geofence/drift setting when the boat is at anchor on in port.

The Digital Yacht 5G Xtream is supplied as a complete solution with antennas, mounts and cabling – all that’s additionally required is a cellular SIM.

The Digital Yacht team
www.digitallyachtafrica.com

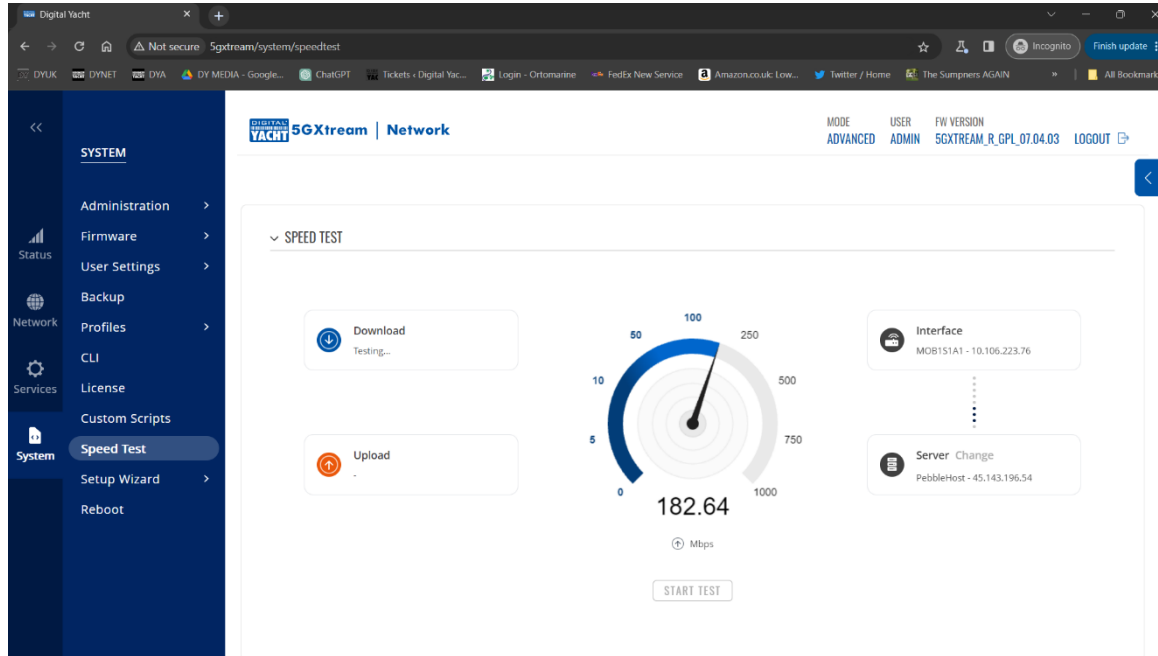


Key Features



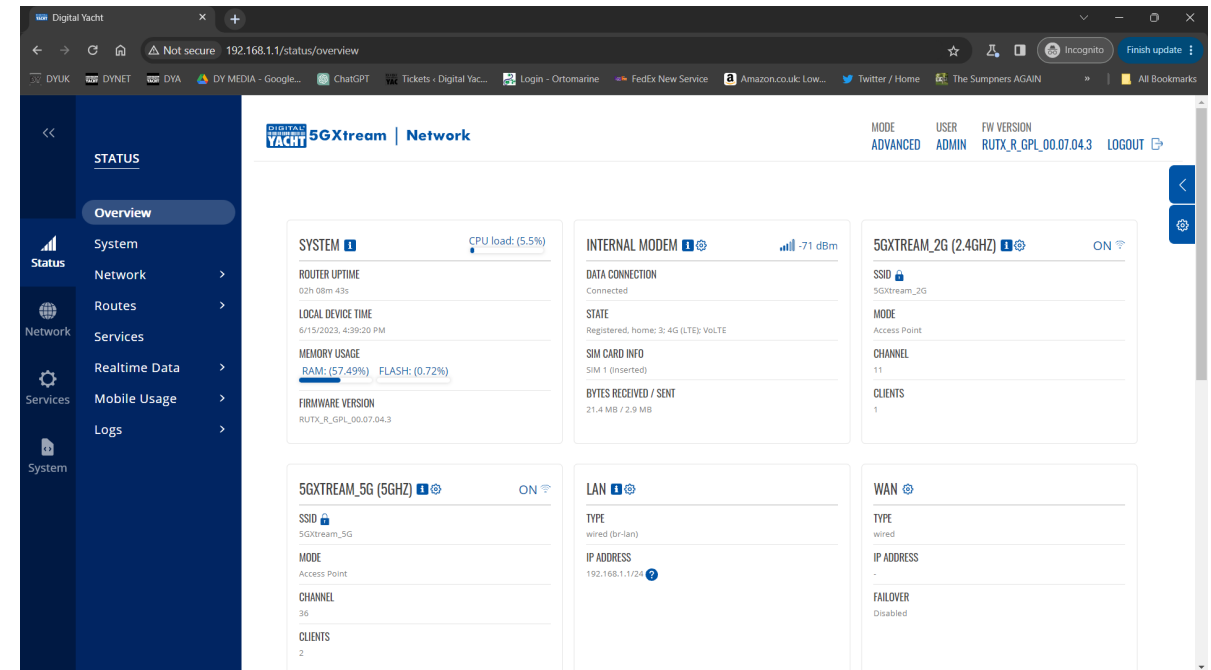
- Ultra fast 5G internet afloat solution with speeds up to 3.4GBs plus also integrates latest 4G Cat 18/19 LTE MIMO technology with range up to 25NM offshore (network dependent) and 4G connection speeds up to 1.6GBs
- Dual SIM slots with auto fail over or manual selection
- Two external, high gain, wide bandwidth antennas plus a compact high gain dome antenna for higher 5G frequencies
- Dual band integrated wifi router (2.4 & 5 GHz) – independently configurable
- Built in GPS with external patch antenna for IOT and tracking/anchor alarm applications
- 4 x LAN ports
- 1 x WAN port for additional internet connectivity – optimised for Starlink satellite systems
- Digital input/output connectivity for IOT/control applications
- SMS capability
- 12/24v operation (5-15W power)

User Interface

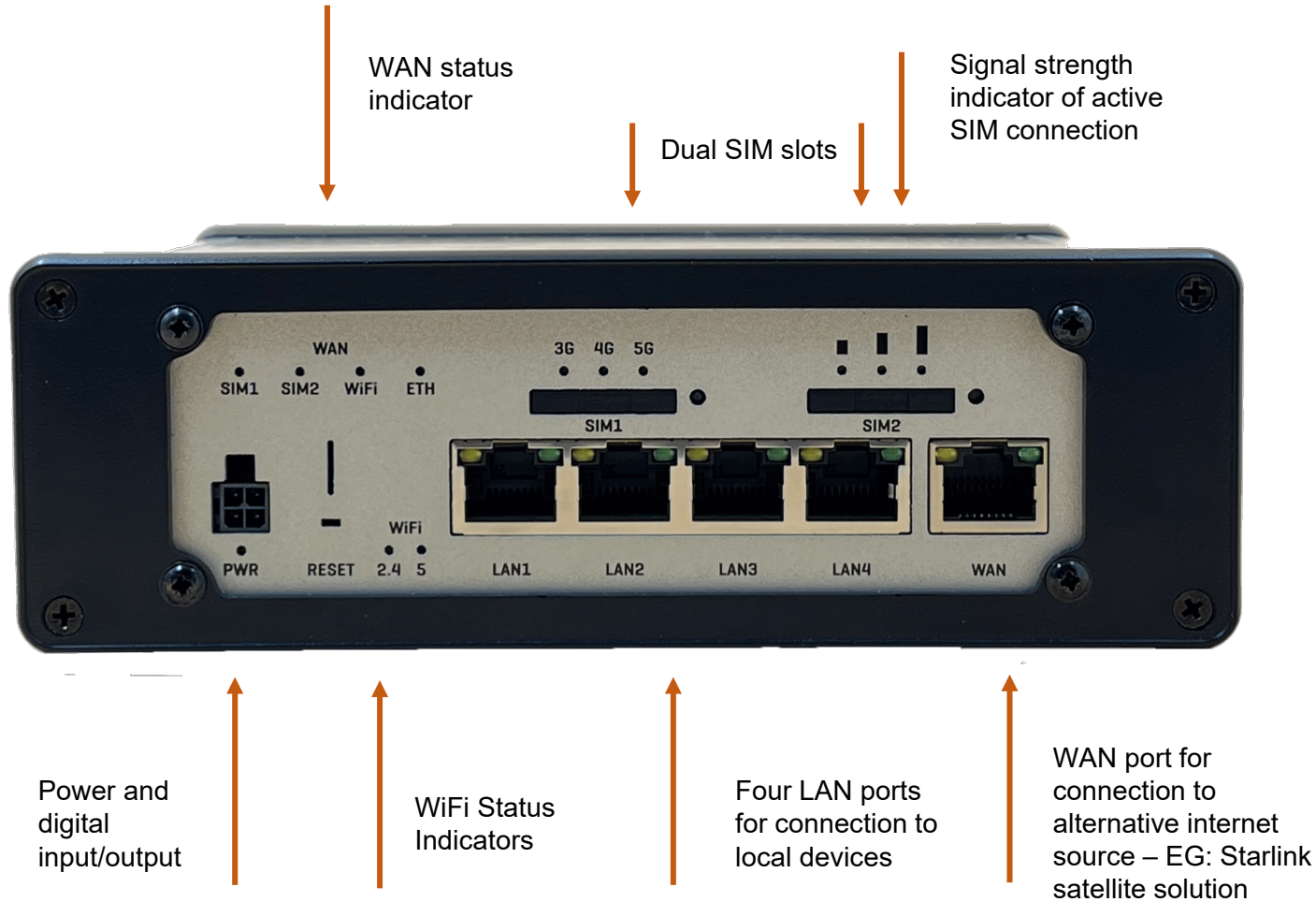


Once set up, there should be no requirement to login other than for diagnostics and configuration. Users simply access the internet through the wifi connection just as they would in the home or office

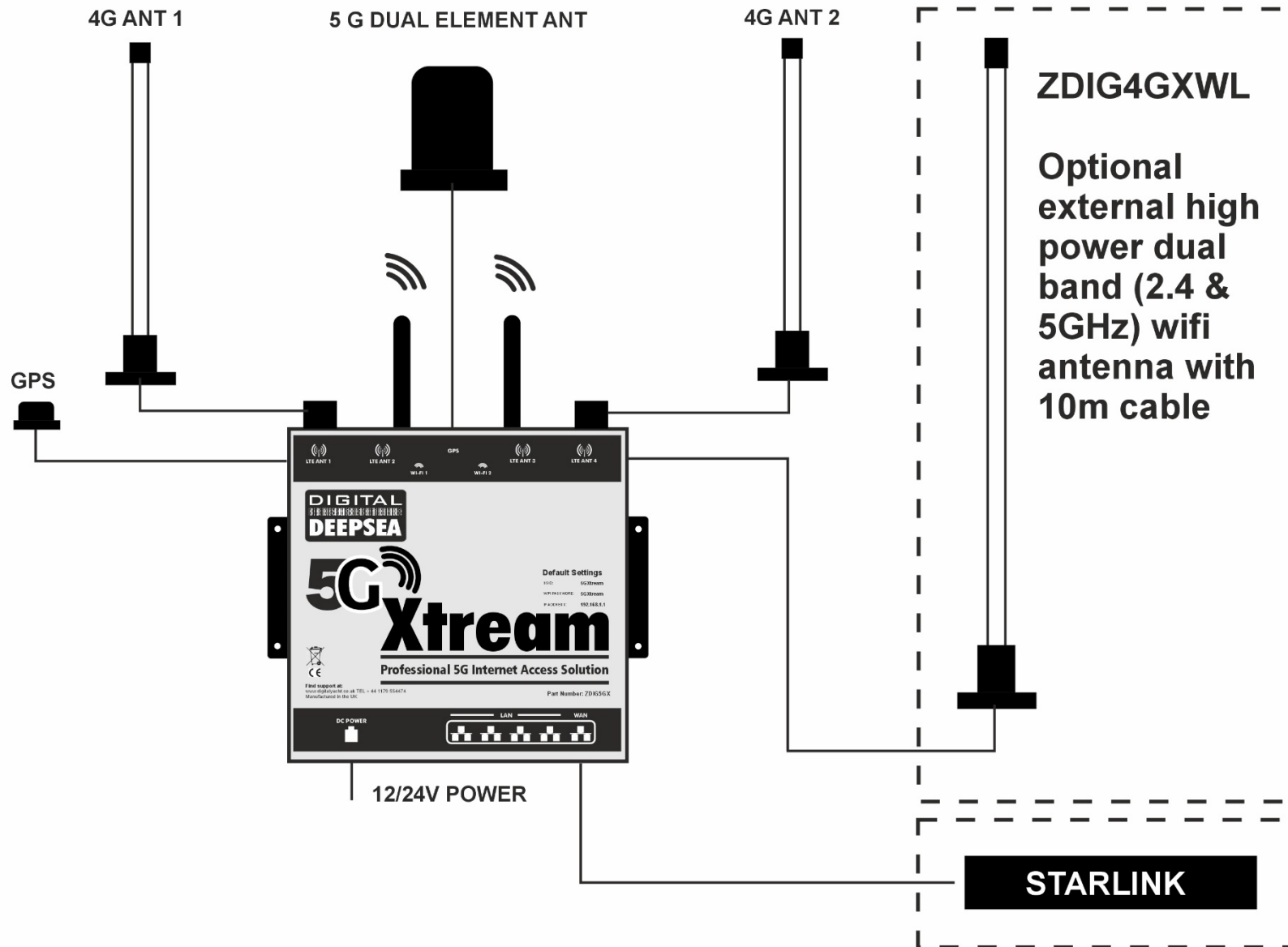
Accessing 5G Xtream functionality is via an easy web interface. Any locally connected device can simply enter the IP address to the password protected interface to set up functions, view traffic and logs and configure wifi.



Rear Panel Connections



System Interconnection



5G Xtream features independent dual band (2.4 & 5GHz) wifi for interconnection to mobile devices.

The ZDIG4GXWL is an optional hi-gain dual band (2.4 & 5 GHz) external wifi antenna for use with shoreside/marina wifi hotspots

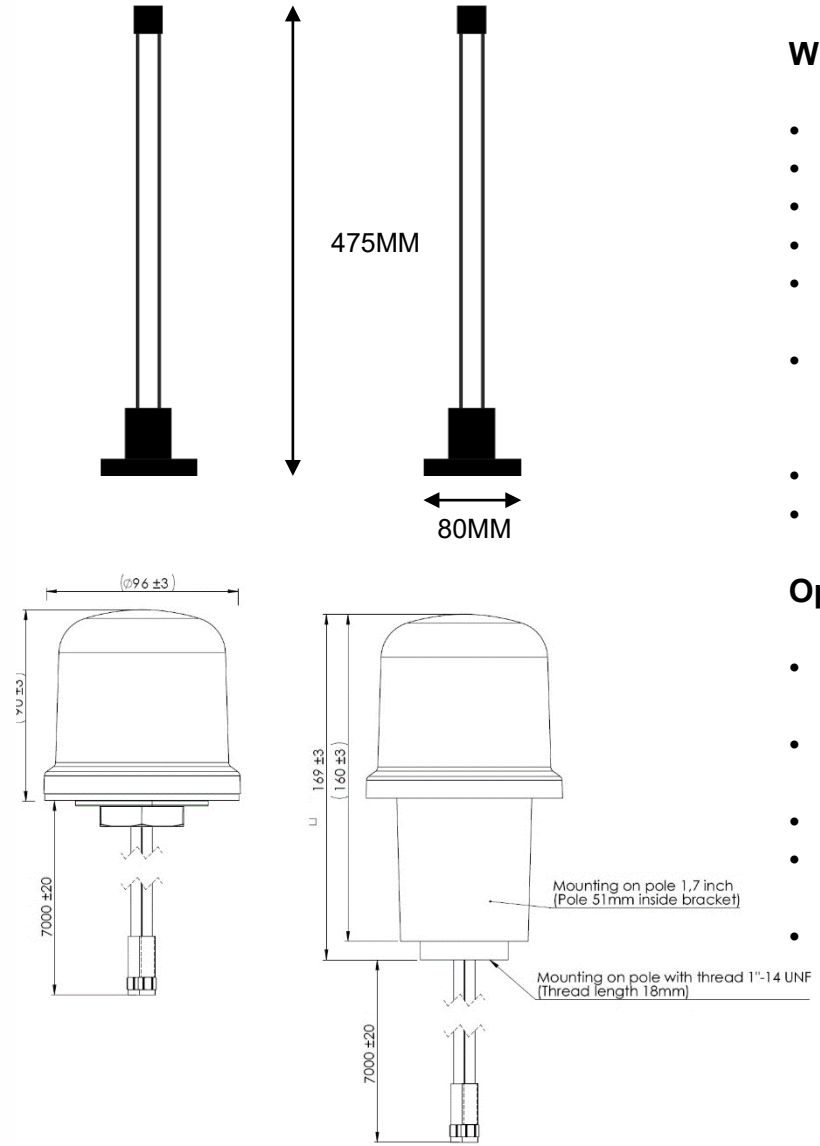
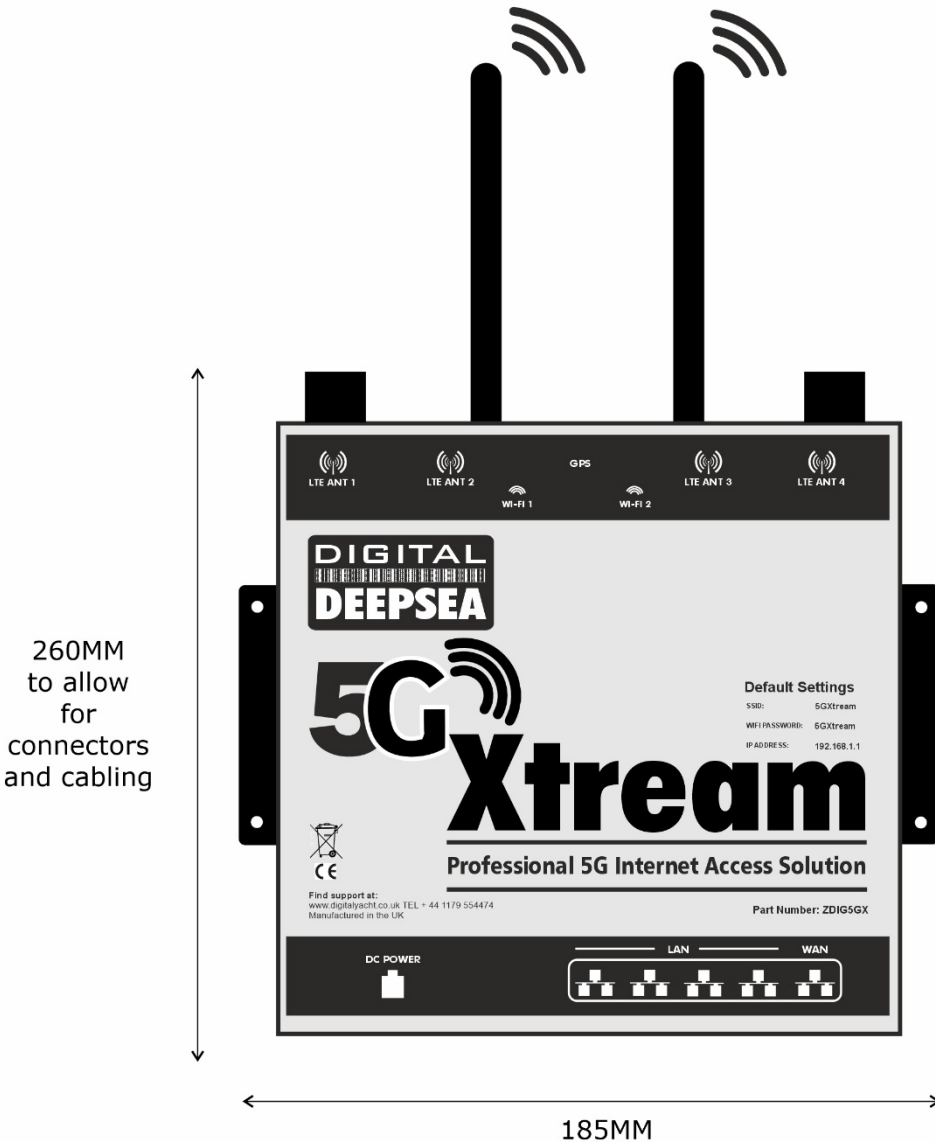
5GX can select cellular, external wifi or external WAN internet connections (eg Starlink) and auto switch depending upon user setup

Digital Yacht's LANLink can connect to a LAN port on the 5G Xtream for NMEA data integration

The GPS antenna is a compact patch designed for below deck mounting on most vessels. It allows for tracking and guard zone alarm SMS messaging



Physical Dimensions



What's in the box:

- 1 x 5G Xtream Modem Unit
- 1 x DC Power/IO cable
- 2 x External antennas
- 2 x E179F antenna bases
- 2 x 7m LMR200 antenna cables (N male to N male)
- 1 x 5G dual element dome antenna with pole/1" adaptor mount and integrated 7m cables
- 2 x Internal wifi antennas
- 1 x Internal GPS antenna

Options:

- 1" antenna adaptors and range of mounts
- 10 & 20m LMR400 antenna cable packs for 4G antennas
- AC 110/220v power adaptor
- 4GXWL Hi power external wifi option
- LANLink NMEA 0183/2000 interface



4GX v 5GX Comparison



Feature	4G Xtream	5G Xtream
Modem Specification	MIMO technology Cat 6 Modem. Up to 300 MB/s Quad Core ARM Cortex A7 717 MHz Processor 256 MB RAM.	5G Sub-6 GHz SA, NSA 2.4, 3.4Gbps DL (4x4 MIMO) 900 MbpsUL, 550Mbps UL (2x2 MIMO); 4G (LTE): DL Cat 19 1.6Gbps (4x4 MIMO), UL Cat 18 200Mbps MediaTek MT7621A, Dual-Core, 880 MHz, MIPS1004Kc 256 MB RAM
4G Antennas	Dual external wide band high gain MIMO supplied with 7m cables and mounting bases. (10 & 20m options available)	Dual external wide band high gain MIMO supplied with 7m cables and mounting bases. (10 & 20m options available) PLUS additional 100mm dome antenna for 4 x 4 MIMO operation and optimised for 5G (7m cable only)
Internal WiFi	Dual band independent 2.4 & 5 GHz 802.11 b/g/n/ac Maximum 150 connections Dual antennas	Dual band independent 2.4 & 5 GHz 802.11 b/g/n/ac Maximum 150 connections Dual antennas
SIM Slots	2	2
GPS	YES	YES
NMEA interfacing	Built in certified NMEA 2000 interface for NMEA 2000 data distribution over wifi	Optional with LANLink N2K external interface

Ordering Information



Part Number	Regions	Details
ZDIG5GX-US UPC 703791696659 (Ships with dual external vertical antennas and compact 100mm dome antenna for additional 5G 4 x4 MIMO operation)	N America	5G NR NSA: n2, n5, n7, n12, n13, n14, n25, n26, n29, n30, n38, n41, n48, n66, n70, n71, n77, n78 5G NR SA: 5G NR SA: n2, n5, n7, n12, n13, n14, n25, n26, n29, n30, n38, n41, n48, n66, n70, n71, n77, n78 5G DL 4 × 4 MIMO: n2, n5, n7, n12, n13*, n14, n25, n26*, n29, n30, n38, n41, n48, n66, n70, n71, n77, n78 4G (LTE-FDD): B2, B4, B5, B7, B12, B13, B14, B17, B25, B26, B29, B30, B66, B71 4G (LTE-TDD): B38, B41, B42, B43, B48 PRICE: \$2295
Note a different variant is available for the EU market		
ZDIG4GX10M	10M CABLE KIT 5G XTREAM (for 4G vertical antennas)	\$275
ZDIG4GX20M	20M CABLE KIT 5G XTREAM (for 4G vertical antennas)	\$399
Shipping Weight & Dimensions	4.8kg 68 x 26 x 11 cm	

4GX to 5GX Upgrade Pack – ZDIG5GXUP

The 4G Xstream will continue as current a product and is probably the most economical and best solution for many users offering excellent performance at a competitive price.

However, for existing 4G Xstream users who want to upgrade to the 5G Xstream, a “trade in-trade up” package is available. The existing 4GX antennas and cabling can be utilised and the upgrade pack ships with the additional dual element 5G antenna.

The 4GX Modem unit requires returning to the factory and the upgrade cost is \$1262.25 (45% discount on new product) including the additional antenna