



WIRELESS
NMEA INTERFACING

AIS

INTERNET AFLOAT

INSTRUMENTS

IPAD & TABLET NAVIGATION

NMEA ALERTING & DIAGNOSTICS

SENSORS

MARITIME CYBER SECURITY

GPS

PC'S . APPS
& SOFTWARE

NEXT GENERATION MARINE ELECTRONICS



SAIL BOAT



MOTOR BOAT



SUPERYACHT



WORK BOAT



SPORT FISHING



COMMERCIAL
FISHING



WELCOME...

DIGITAL YACHT IS ALL ABOUT NEXT GENERATION NAVIGATION, COMMUNICATION AND ENTERTAINMENT SYSTEMS FOR YOUR BOAT

BOATING SHOULD BE FUN, SAFE AND EASY AND OUR PRODUCTS INTEGRATE INTO EXISTING AND NEW BOAT NETWORKS TO BRING A POWERFUL DIMENSION TO YOUR ONBOARD ELECTRONICS



We firmly believe that low cost consumer devices such as iPhones and tablets, PCs and MACs have a place on board and can help make legacy systems compete with the latest in dedicated marine electronic products at a fraction of the cost. We make internet access whilst afloat easy and affordable as well as bringing all your navigation data to your favourite consumer devices - not just for you but for crew and guests too.

Our navigation systems cover advanced GPS and compass technology as well as the most comprehensive range of AIS products in the marketplace. Plus our PC and software solutions bring simple yet powerful solutions to a variety of on board requirements from communication to navigation, entertainment to monitoring.

We are proud that our production and development process takes place in UK, Europe and N America. A skilled and competent team of engineers work daily to improve our current products, as well as to develop new innovative solutions. Bristol & Fareham are our production locations and we work with a loyal group of local contractors to create a lean manufacturing process. We use the United Kingdom as our centre of excellence to achieve our goal of creating much more durable and long-lasting products with the latest technical standards and highest reliability.

Our US sales and development office is located in Boston and our European facility is based in Rouen, France.

Good Boating,
The Digital Yacht Team



AIS Receivers and Accessories

The most extensive range of AIS receivers and accessories with a model to suit every application.

Adding AIS to your navigation system is simple with Digital Yacht AIS receiver products. All units use the most advanced and super sensitive true dual channel parallel processing receivers for exceptional sensitivity. The AIS100 series is available with NMEA, USB or a combi USB-NMEA output on the PRO model for connection to plotters, PCs or MACs. The Pro model also features a NMEA input multiplexer. Add wifi connectivity for tablet or iPad based navigation with our WLN10SM to the AIS100 or AIS100Pro.

AISNode features a NMEA 2000 interface and is self powered from the NMEA 2000 backbone. Just "T" in and connect an antenna for the easiest of installations. Digital Yacht also offers SmarterTrack Lite AIS viewing software free of charge with every AIS system, turning your PC into a great AIS display. AISNET is an AIS receiver base station with a network port - connect to a router and send local AIS traffic to internet providers like Marine Traffic or even your own local server.

For delivery and charter skippers, a package of PC and AIS100USB AIS receiver with the portable QMax antenna provides a simple solution. Add our SmarterTrack software with Navionics charting and a GPS160USB for a full featured navigation package.

AIS100 Receiver Series



- Advanced dual channel HF AIS receiver technology for best performance
- Choice of NMEA 0183 or USB interfaces (PC & MAC compatible)
- Available with NMEA 0183 multiplexer option on Pro model
- Add wireless connectivity (for iPad and tablet navigation) to NMEA devices with the WLN10SM
- Ultra low power consumption

AISNode - AIS Receiver with NMEA 2000 Interface



- Simple solution to add AIS data to any NMEA 2000 network
- Self powered from NMEA 2000 backbone - just connect to a VHF antenna or splitter
- Advanced HF AIS design for optimum performance
- Supplied with integrated NMEA 2000 drop cable
- Fit and forget solution for AIS reception on your NMEA 2000 MFD

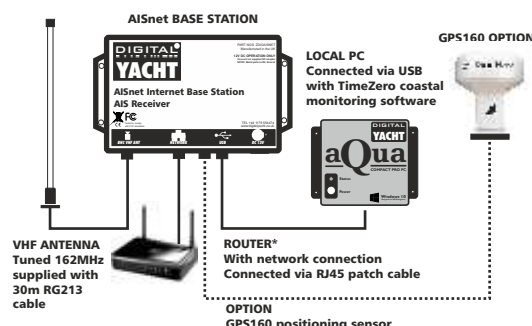
AISNET - AIS Base Station Receiver with network interface



- Network enabled AIS receiver for base station operation
- High performance dual channel AIS receiver
- Integrated ethernet network controller for supplying AIS data to online AIS websites
- USB Interface for simple plug and play connection to a local PC
- Built-in VHF splitter as an option (AISNETSP)

AISNET With TimeZero Coastal Monitoring Package

- Turn key harbour, port, oil rig, aqua-culture farm etc monitoring solution with local operator displays and complete AIS solution
- Detailed charting and highly configurable alarms for guard zone, target type, target speed etc
- Weather forecast and real time overlays
- Optional radar and CCTV/camera interfaces
- Optional complete cloud recording solution



SPL1500/2000 AIS VHF Antenna Splitter



Patented zero loss technology lets you share your main VHF antenna with the VHF radio, FM radio and AIS receiver or transponder.



GV30 AIS VHF GPS Antenna

The GV30 is a combination of VHF and GPS antenna with twin coax feeds (10m) (antenna mounting base not included).



Very good performance specifically tuned to 162MHz (AIS frequency).

Find out more online



Sensors & Instruments

A complete range of smart and innovative instrument sensors

Digital Yacht iSeaSense is a new range of complete marine instrumentation packs based on NMEA 2000 and wireless connectivity – allowing for maximum flexibility and connectivity. Choose from using phones, iPads and tablets for boat data displays as well as 3rd party industry standard instruments and multi function displays.

Top quality and highly accurate sensors are used for boat depth, speed, temp, wind, compass and GPS data. Data can be shared with other devices on the NMEA 2000 network too. iSeaSense is easy to specify. Available as two main starter packs, everything is included for an easy install and ordering. No app is needed either as the iSeaSense wireless server creates powerful graphical and numeric display pages that can be viewed via a browser on any device.

Positioning is a navigation fundamental and Digital Yacht's QuadNav™ GPS160 is a new, high performance positioning sensor using GPS, Beidou, Glonass and the new Galileo satellite systems. Our QuadNav technology is used to combine signals from all three systems to compute the best possible fix accuracy and reliability. Galileo is the new global navigation satellite system (GNSS) that has been developed over the past two decades. Typical accuracy is better than 1m.

The GPS160 is available with a NMEA 0183 output (4800, 38400 and 115200 baud programmable) and a USB variant for PC, MAC and Linux. For NMEA 2000 systems, a bundle is available with a Digital Yacht iKonvert NMEA 2000 gateway. The GPS160 wireless GPS antenna version is supplied with Digital Yacht NMEA to WiFi gateway for wireless navigation and the GPS160 SeaTalk version is supplied with Digital Yacht SeaTalk1 to NMEA0183 converter. The GPS160 also supports a simple external MOB (man-over-board) switch or device. When activated, the GPS160 creates a "synthesised" AIS SART MOB message on its NMEA output which can be interfaced with a local plotter for MOB identification.

Accurate fluxgate compass heading data remains a fundamental parameter for marine navigation and the HSC100 uses fluxgate technology to deliver heading data for on board systems. Typical applications include enabling course up and true motion type displays on chart plotters, radar overlay onto electronic charts and stabilisation of radars when used for MARPA/ARPA target tracking.

iSeaSense Depth Speed Temp & Wind Pack



- Complete marine instrumentation packs
- Based on NMEA 2000 and Wi-Fi connectivity
- PK1: Includes depth, speed and temperature transducer with pitch and heel sensor
- PK2: As PK1 plus wind sensor with 20m cable
- A full NMEA 2000 backbone cabling kit is included
- Interface creates beautiful graphic display pages of data
- Includes extra NMEA 2000 T piece for system expansion (PK2)

Depth-Speed-Temp-Attitude NMEA 2000 Smart Sensor



- Transducer for depth, boat speed, water temperature and boat heel/pitch
- Supplied with 6m NMEA 2000 cable
- Includes Bluetooth interface for advanced calibration
- Super accurate 5Hz speed updates from 0.3 to 45 knot
- 235 kHz frequency prevents mutual interference with other echosounders on the vessel

GPS160 QuadNav GPS/Glonass/Beidou/Galileo Sensor



- 72 channel GPS, Glonass, Beidou and Galileo GNSS positioning receiver
- Typically sub 1m accuracy with QuadNav™ technology
- Can be configured as dedicated GPS, Glonass, Beidou or Galileo only device
- Sophisticated anti-spoofing algorithm for robust positioning performance
- User/field selectable 4800, 38400 and 115200 baud operation through simple internal DIP switches
- Available in NMEA2000, NMEA0183, Seataalk, USB and WiFi version

HSC100 Fluxgate Compass



- High Speed (10HZ) NMEA electronic fluxgate compass sensor
- Ideal for use with radar overlay and MARPA target tracking systems
- Industry standard NMEA 0183 "HDG" output
- Gimballed to 45°
- New "Rate of Turn" version of the HSC100 now released for Class A transponders (HSC100T)

On Board Networking

Digital Yacht interfacing products provide smart and cost effective solutions for connecting equipment and systems together

Digital Yacht NMEA Interfacing products provide smart and cost effective solutions for connecting dedicated marine electronics to the latest consumer devices such as smart phones, laptops and tablets. Both traditional wired and the latest wireless interfaces are available allowing you to easily transfer NMEA data to your mobile device. Whether you are an iPhone/iPad, Android, PC or Mac user, wireless (or wired) interfacing can now be simply added to your existing navigation system with the addition of one of Digital Yacht's smart little devices.

We've also created NMEA gateways to multiplex the NMEA data or to connect and convert the NMEA data to an ethernet network, USB. NMEA is the National Marine Electronics Association (NMEA) and is a US-based marine electronics trade organisation setting standards of communication between marine electronics. There are currently two main standards: NMEA0183 and NMEA2000.

The iKonvert interface is an intelligent and flexible gateway. It allows for new NMEA2000 equipment to talk to legacy NMEA0183 equipment and vice versa. Conversions are bi-directional. For example, you may want to get the data from older NMEA0183 sensors onto your NMEA2000 network or you have a new NMEA2000 only MFD and want GPS and navigation data sent to your older NMEA0183 VHF and Autopilot.

LANLink - NMEA to Ethernet Converter



- Bi-directional NMEA to Ethernet converter
- Available in two versions: NMEA0183 or NMEA2000
- 12/24v DC low power operation
- Connects to router or devices via simple RJ45 cable connection
- Web user interface for easy setup from connected device via browser
- TCP/IP or UDP connection modes – support for up to 5 connected devices with TCP/IP

NS5 - Network Switch



- 5 Port Network Switch 100MB speed
- 12/24v DC low power operation
- Dual redundancy power supply design
- Connects to router via RJ45 Cat 5/6 network cable connexion
- Ideal for use with our 4G Connect and Fusion audio systems
- Supports 10/100 Base-T

iKonvert - NMEA2000 to NMEA0183 Converter (or USB)



- Small but powerful bi-directional NMEA 2000 to NMEA 0183 Converter
- Powered from the NMEA2000 network
- Converts AIS, GPS, Navigation, Instrument and XDR data
- USB model features an integral USB cable compatible with all popular operating systems
- Raw developer mode available too for application developers and Signal K enthusiasts

SeaTalk to NMEA Converter (or USB) - Bring life to legacy instruments



- Small but powerful bi-directional converter
- Powered from the SeaTalk network
- Features reliable multi-stage transistor SeaTalk interface
- Opto-isolated NMEA0183 input and differential NMEA0183 output
- USB version is compatible with all versions of Windows, OSX and LINUX

NMEA 0183 to USB C Adaptor



Converts NMEA 0183 into USB (C type connector) so that your computer can read NMEA 0183 data. Ideal for use with PC nav programs. USB-A version also available

JB1 - Power & NMEA 0183 Junction Box



The new JB1 junction box from Digital Yacht is a simple, easy to install solution for NMEA 0183 and power connections. It uses a patented spring lock terminal system from Wago. This allows various sized cables to be connected and joined in seconds.

*SeaTalk is a registered trademark of Raymarine

Find out more online

NMEA 2000 Networking Components

A complete range of NMEA 2000 cables & connectors to create NMEA 2000 networks plus USB and Wi-Fi Interfaces to connect your PC & Tablets to the network

NMEA 2000 is a plug-and-play communications standard used for connecting marine sensors and display units within ships, boats, and other vessels. Digital Yacht offers NMEA 2000 cables & connectors to create NMEA 2000 networks plus diagnostics & monitoring tools. The NMEA 2000 Starter Kit is a quick and easy way to start building a NMEA 2000 network and Digital Yacht can provide additional NMEA 2000 cables and components that allow you to expand your system – up to the maximum 50 NMEA 2000 device limit. The maximum single drop cable length is 6m and the total length of all drop cables must be less than 76m.

With a NMEA 2000 to Wi-Fi server or NMEA 2000 to USB converter allows your tablet, smartphone or PC to receive navigation data from your onboard navigation equipment. A NMEA 2000 to Wi-Fi server will be able to connect to your navigation system equipment such as an AIS transponder, chart plotter, etc.

Your navigation software or iOS/Android app will be then connected to your navigation system (chart plotter, instruments, autopilot, AIS, etc.). Then, your software or navigation app will display in real time AIS targets, GPS, Wind and all navigation information on your NMEA 2000 network. Our products are compatible with more than 100s apps & navigation software.

For NMEA 2000 installation, NAVDoctor is the perfect NMEA 2000 diagnostic tool for dealers, installers and boat builders. It turns any mobile device in to an NMEA 2000 network analyser, creating simple and clear web pages that show the health and status of your NMEA 2000 network.

NMEA 2000 Starter Kit



- NMEA2000 starter kit – Everything you need in one box
- Smart 4-Way T-Piece "Backbone"
- 1m (3ft) Power Cable with in-line fuse
- 1m (3ft) "Drop Cable"
- Pair of removable network terminators so system can be easily expanded
- Connect up to three devices

NavLink2 - NMEA 2000 to Wi-Fi



- Self powered from NMEA 2000 bus – fits in seconds
- Supports TCP/IP and UDP connexion modes
- Compatible with all popular apps like iNavX, TimeZero, Weather 4D, Navionics, SailGrib, NavLink, iSailor, SeaPilot, AquaMap etc
- Up to 7 connected devices - Password protected WiFi
- Easy web interface for programming
- Can act as dedicated wireless server or rather can connect to an existing wireless network

iKonvert - NMEA 2000 to USB



- Small but powerful bi-directional NMEA 2000 to USB Converter
- Powered from the NMEA2000 network
- High Speed USB 2.0 USB Interface (FTDI)
- Compatible with Windows, OSX, LINUX and Android
- Can operate in "Raw Mode" (Binary PGN data) through configuration
- Converts all of the key navigational data

NAVDoctor - NMEA 2000 Diagnostic Tool



- Self powered from NMEA 2000 bus – fits in seconds
- Perfect NMEA 2000 diagnostic tool for dealers & installers
- Simple web interface displays in your browser
- Lists all devices on the NMEA network and all PGNs being transmitted
- Checks physical (bus voltages/frame errors) and data messages
- Health page gives you an immediate snapshot of the networks key performance parameters
- Generates a Network Health Report that you can print or save to PDF

1/3/6m NMEA 2000 Drop Cable



1,3 or 6m NMEA 2000 drop cable to expand your NMEA 2000 to to whatever size you need.

NMEA 2000 Single or 4 way T-Piece



As your NMEA 2000 network expands beyond the 3 device limit of our NMEA 2000 Starter Kit, you can use one of our single T-pieces or 4 way T-pieces to add additional devices.

Find out more online

NMEA 2000 Alarms & Monitoring

Monitor your onboard NMEA 2000 network in real time, add battery monitoring to your MFD, create alerts for all data and integrate specialist sensors for safer boating

For boat owners, keeping their vessel's electronics in top condition is crucial. However, when issues arise, it can be challenging to identify the root cause of the problem. That's where Digital Yacht's range of networking and monitoring tools come in.

Prevention is better than cure and NET Protect is the world's first "Cyber Security" device for network monitoring and protection. From initial installation of the NMEA 2000 network, NET Protect will allow the network to be tested/validated and then will monitor the network 24/7 identifying any performance or security issues before they can cause a major problem. If a problem does occur, NAVDoctor and NET Protect provides a simple and easy to use tool that turns your phone or tablet into a powerful NMEA 2000 diagnostic and test system.

Monitoring and navigation alarms are essential for any boater to ensure the safety of their vessel and passengers. In the past, monitoring required manual checks of gauges and instruments, which can be time-consuming and tedious. With NAVAAlert, users can set alerts for various parameters including navigation, engine, and electrical issues, using any parameter available on the NMEA 2000 network. You can also set up custom anchor and collision alarms and receive SMS message for any of your alarms.

We also have a new range of electrical and carbon monoxide monitoring solutions with an NMEA 2000 interface for complete vessel protection.

NAVAAlert - NMEA 2000 Monitor & Alarms Solution



- Universal NMEA 2000 alarm and monitoring solution
- Set a configurable audio and visual alarm for any parameter on the NMEA 2000 network – for instance: shallow depth, low fuel level, off course, engine temp, tank levels, low voltage etc
- Relay the alert via the NMEA 2000 bus to a Garmin MFD
- SMS alerting through Digital Yacht's 4G Xstream system to a mobile – ideal for remote monitoring of the boat.
- Built in unique anchor drift alarm
- Built in AIS collision avoidance alarm

NET Protect - Cyber Security System



- Tests & validates the NMEA 2000 network during installation
- Allows configuration of other NMEA 2000 devices
- View and analyse the NMEA 2000 network with device and PGN displays plus raw data logging
- 24/7 monitoring of the NMEA 2000 network
- Integrated WiFi antenna can create its own WiFi network or join vessel's wireless network
- Configuration and monitoring via built-in web interface
- 92dB internal buzzer for alerts
- Ability to generate SMS alert messages when used with a Digital Yacht 4GX or 5GX product for remote alerts

BM100 - Battery Monitoring System



- BM100 solution comes as a complete package with 500A SmartShunt and veKonvert NMEA 2000 interface.
- Bluetooth interface for detailed analysis including charge cycles, state of charge, remaining capacity
- Use your phone/tablet and your NMEA 2000 devices for battery monitoring and management
- Monitor voltage of a separate (eg starter) battery
- Universal NMEA 2000 gateway for Victron's popular range of smart battery monitors/SmartShunt using VE.Direct interface (BMV, MPPT, SmartShunt, etc.)
- Enables electrical and battery monitoring and management on compatible multi functions displays (Raymarine, Garmin, Navico, Furuno etc)
- Provides battery voltage and charge/discharge current, state of charge and time to depletion

CO Alert - Carbon Monoxide Detector with NMEA 2000



- Carbon monoxide detector and alarm with NMEA 2000 connectivity
- Local, loud audio and visual alarms on activation (or fault)
- NMEA 2000 pop up alerts on compatible MFDs
- Multi cabin/detector options
- Sophisticated internal algorithm detects instant high concentration as well as low concentration for long periods for maximum protection

Find out more online

Portable Navigation

Integrate smart devices like iPads and tablets into your boat's navigation system

At Digital Yacht we define Portable Navigation as being able to use a laptop, tablet, smartphone for navigation and mapping. With the rise of technology, portable navigation is becoming more and more common.

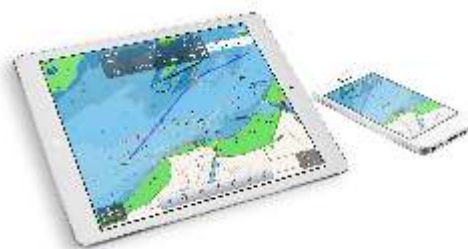
Navigation/mapping applications and software are more and more popular and numerous for Android or Apple products and now most of them support NMEA data allowing your tablet, smartphone, laptop to become a complete and trusted navigation system. By connecting an NMEA to WiFi adaptor or an NMEA to USB adaptor, your navigation software or iOS/Android app will be connected to your navigation system (chart plotter, instruments, autopilot, AIS, etc.). Then, your software or navigation app will display in real time AIS targets, GPS and Wind information.

There are numerous benefits of using an iPad or tablet for navigation. Obviously, the financial aspect is the most important for portable navigation, where a simple system allows you to get all navigation data on your mobile devices. With most people already owning a tablet or smartphone, the user only needs to purchase the product needed to transmit the data to these devices.

Tablet navigation also gives the user the ability to greatly improve their electronic system and utilise a navigation system with unlimited functions. If a chart plotter is already owned, customers can connect their existing plotter system to a product that will broadcast NMEA data wirelessly. This works with all major brands including Raymarine, Navico, Furuno, Garmin, etc.

In addition to navigation and cartography, having an iPad, Tablet or Smartphone on board allows you to connect to the internet (if you have access) and therefore check your emails, surf the internet, Youtube, Facebook, etc.

Our products are compatible with all popular navigation apps & software!



Read our blog for articles & tips on the best navigation apps and software!



Nomad 2 Portable Class B AIS Transponder



- Full function portable Class B AIS transponder (send and receive AIS)
- The perfect AIS solution for charter users, rental boats, delivery skippers, pilots, commercial users etc
- Supplied with combination GPS-VHF antenna
- Wi-Fi & USB Interfaces
- USB powered
- Easy programming and control through wireless web interface – no apps required

WLN10 Series NMEA0183 to WiFi Servers



- NMEA 0183 to WiFi server (4800 baud or 38400 baud)
- Three input NMEA 0183 to WiFi Multiplexer with WLN30 model - Multiplexed data transmitted over Wi-Fi and NMEA 0183 output
- Set baud rate, SSID and password through web interface
- Supports both UDP (for multiple connections) and TCP/IP Interfaces

EngineLink Wireless Engine Interface



- Display your engine data on a tablet, smartphone, PC, Mac, etc.
- Integrated engine instrument displays
- Compatible with engines/outboards with NMEA 2000 capability
- Displays for popular parameters like RPM, battery voltage, temperature, pressure, fuel, etc
- Dedicated electric engine display page
- Support for single or dual engines

NavLink 2 NMEA2000 to WiFi Server



- NMEA2000 to Wifi gateway
- Self powered from NMEA 2000 bus – fits in seconds
- Supports TCP/IP and UDP connection modes
- Provides AIS, navigation and instrument data to all popular apps (Compatible with Windows, Linux, MAC OS, iOS and Android)
- Up to 7 connected devices
- Password protected
- Developer mode for advanced users and custom applications - eg Expedition software

Find out more online

PC Navigation

Utilise a PC for navigation, communication and entertainment with the Aqua Compact Pro Series

Thinking about adding a PC to your boat? Digital Yacht's new Aqua Compact Pro PC really does fit in the palm of your hand! Space is always at a premium on board and despite its slimline 11.5 x 11 x 5 cm dimensions, the Aqua PC packs in a powerful 12th generation Intel Core i3 processor with exceptional graphics performance for the latest 3D charting and HD navigation programs. It's the perfect partner for applications like Maxsea TimeZero – even with radar and 3D overlays.

So why a dedicated PC on board? The number one, compelling reason to add a PC to your boat's navigation and communication system is amazing value. There's no doubt that a dedicated chart plotter is ideal for use at the helm where it needs to be waterproof and compact. But below decks, a PC can offer big screen performance at a very attractive price compared to a dedicated large screen multi-function display. Of course, a PC and chart plotting software can also be your only electronic navigation device, just integrated to the GPS and instruments via a simple NMEA interface.

A PC also offers more powerful functionality than a dedicated MFD with the ability to install software for lots of applications from navigation to entertainment, email communications, weather and internet connectivity. PCs are also up-dateable as new applications become available.

And why not a laptop? They are simply not designed for the hostile marine environment and consume large amounts of power. It's a much neater solution to have a dedicated PC and dedicated display both in terms of functionality and reliability. However, if you're chartering a boat, a laptop may be the answer and our SmarterTrack Express Pack with software and an advanced QuadNav plug'n play positioning sensor makes portable navigation easy.

Aqua Compact Pro PC



- The perfect solution for demanding navigation applications like TimeZero
- Direct 12v DC Operation - 24v option
- i3 12th gen processor with Windows 11 operating system
- 8GB DDR4 2133MHz SO-DIMM memory and 240GB solid state drive
- Dual display outputs – full size HDMI and USB C
- Bluetooth 5 and Dual Band WiFi built in
- 4 x USB 3 ports with charging mode on front panel port
- Micro SD slot – ideal for Navionics cards with our SmarterTrack PC navigation software
- Also available: Aqua Compact Pro + with Intel Core i7 processor with 8GB RAM, 480GB solid state hard and fast HD graphics

AquaNav Pro PC



- 24" HD LCD Marine Monitor
- Ideal for use with our Aqua Compact Pro PC range
- Measures 56 x 35 x 6cm
- Suitable for flush mounting (supplied with studs) or can also fit to standard VESA mount (75mm or 100mm)
- 1920 x 1080 pixel display with 170H/160V viewing angle
- 2M:1 contrast ratio
- 300CD brightness (dimable)
- Also available: 17", 19" and 22"
- DC operation - choose 12 or 24V

- Ultra rugged totally solid state and fan-less design optimised for charting and navigation operation
- 12V DC low power operation – typically 15-25W
- Intel i3 processor, 4GB RAM with 240GB SSD
- Dual HDMI video outputs
- Integrated 2.4 & 5 GHz wifi
- Integrated Bluetooth
- Certified NMEA 2000 interface
- 3 x Spare USB ports and wired LAN port

PC Software & Accessories

A wide choice of popular navigation software & accessories for your PC on board

Having the right PC software can transform your boating experience, giving you access to real-time navigation data, weather information, and other important updates that can help you stay safe and informed on the water. All our marine PCs are compatible with all the popular navigation software. However, Digital Yacht can also propose two popular PC software options: SmarterTrack and TimeZero.

SmarterTrack is a comprehensive navigation software suite that allows you to plot your course, monitor your progress, and receive real-time weather and AIS updates. TimeZero is another powerful navigation software option with features like high-resolution chart rendering, real-time tidal data, and advanced weather forecasting tools. With the right hardware and software combination, you can transform your PC into a powerful navigation tool that helps you stay safe and informed on every boating adventure.

To receive all your navigation data into your navigation software, A NMEA to Wi-Fi server or USB converter must be connected to your PC and to your navigation system. Then, your software or navigation app will display in real time AIS targets, GPS, Wind and all navigation information.

Finally, for laptop navigation, check out SmarterTrack Express package which includes the SmarterTrack navigation software and the GPS160 antenna with USB interface. Simply install the software and you will transform your notebook into an easy to use yet very powerful chart plotter.

SmarterTrack Navigation Software



- Simple yet powerful PC Navigation software
- Supports Navionics Gold or Platinum electronic charts
- Excellent AIS support
- Full set of configurable alarms
- Displays tidal height and tidal flow data
- Route and waypoint data created on SmarterTrack can be transferred to your dedicated chart plotter via SD card
- Displays NMEA instrument data
- Allows import of downloaded weather GRIB files

Timezero Navigator



- Recreational software that fits all types of marine navigation
- Autopilot Output Connection
- TZ Maps, revolutionary nautical charts with vector, raster and 3D bathy presentations
- Synchronisation with TIMEZERO ecosystem including TZ MAPS, TZ iBOAT, TZ CLOUD, and Furuno NavNet system
- Free weather forecast and tide data
- Route planning wizard
- Real time AIS targets & Points-Of-Interests
- Unrivalled 2D/3D Chart Engine and Photofusion

SmarterTrack Express



- Navigation package which includes the SmarterTrack navigation software and the GPS160
- Includes our TriNav GPS160 with GPS, Galileo and GLONASS
- USB powered sensor provides 18Hz Position, Speed and Course updates
- SmarterTrack is a powerful PC navigation software

NMEA 0183 & 2000 Data for PC



- Powerful and bi-directional NMEA to USB or WiFi converter
- Navlink2 & iKonvert USB take their power from NMEA 2000 network
- NMEA 0183 to USB Converter (also USB-C)
- iKonvert USB: NMEA 2000 to USB Converter
- WLN10/30: NMEA 0183 to Wi-Fi
- NavLink2: NMEA 2000 to Wi-Fi

Internet Afloat & Entertainment

Our internet solutions offer speedy and affordable internet access afloat

More and more boaters want access to internet afloat. Marinas and ports as well as a large number of cafes, hotels, restaurants and service providers offer WiFi connectivity but you may just miss that vital connection if you're moored or anchored away from the dock. Internet access afloat really adds to boating. Not only can you keep abreast of news and email, but it's a great source of entertainment, TV and media when allowing you take advantage of the latest entertainment services such as Netflix and Spotify. It can also be used to download the latest weather information.

4G Connect Pro and 4G/5G Xstream offer internet connectivity up to 25NM from the coast through 3G/4G/LTE connectivity which fulfils 99% of the recreational boating industry's requirement. Simply insert a SIM card and you have your own independent internet network without hunting for WiFi access points and passwords. Our products utilise MIMO technology and dual external antennas.

The 5G Xstream offers an ultra fast CAT20 modem with dual SIM card readers, built-in GPS. They create a local WiFi (or wired) network on board for other devices to connect and they can also connect to another internet source and switch between the connections. For satellite integration, The 4G/5G Xstream WAN port is optimised for Starlink satellite connectivity allowing the 4G/5G Xstream to act as a sophisticated and fast router for all on board internet communications.

5GXstream 5G Router with Starlink Integration



Starlink Solution

- Ultra fast 5G internet afloat solution with speeds up to 3.1GBs plus also integrates latest 4G Cat 20 LTE MIMO technology with range up to 25NM offshore (network dependent) and 4G connection speeds up to 2GBs
- Dual SIM slots with auto fail over or manual selection
- Two external, high gain, wide bandwidth antennas plus a compact high gain dome antenna for higher 5G frequencies
- Dual band integrated wifi router (2.4 & 5 GHz)
- Built in GPS with external patch antenna for tracking/anchor alarm applications
- 4 x LAN ports & 1 x WAN port for additional internet connectivity – optimised for Starlink satellite systems

4GXstream 4G Router with NMEA 2000 Interface



Starlink Solution

- Latest Cat 6 LTE MIMO technology with range up to 25NM offshore (network dependent)
- Dual SIM slots with auto fail over or manual selection
- Two external, high gain, wide bandwidth antennas
- Dual band integrated wifi router (2.4 & 5 GHz) – independently configurable
- Built in NMEA 2000 interface to transmit NMEA 2000 data over the wireless and wired network to compatible apps
- Built in GPS for remote tracking & anchor alarms
- 3 x LAN ports & 1 x WAN port for additional internet connectivity
- Optional 10m & 20m LMR400 assemblies

4G Connect and 4G Connect Pro (with external antennas)



- Hi performance 4G/LTE modem for exceptional speed and range
- SIM unlocked for any network provider
- Choose between internal antennas (Standard) or external antennas (Pro)
- Pro model supplied with 2 x high performance external 48cm antennas
- 7m low loss LMR 200 cable kit included
- Supplied with deck base for antennas on Pro model
- WiFi router for tablets and phones
- 7m std (23ft), 10m (33ft) or 20m (66ft) option coax cable

4G Littoral Link



- Entry range internet access solution
- LTE Class 4 modem offers long range and up to 70Mbps speeds
- Range up to 10NM
- Supplied with a compact dual element antenna with standard 1" threaded base (fits standard deck, rail, pole etc GPS mounts)
- 23 ft (7m) low loss LMR 200 cable kit included (one antenna, two cables)
- Wifi interface for iPads, tablets, phones, PC, MAC etc
- 12V DC operation with <5W power consumption

Find out more online

Internet Accessories & TV Antenna

Add traditional wifi hotspot connectivity to the 4G/5G Xstream and terrestrial (over the air) TV afloat with the DTV100/200 antennas for a regular TV

Digital Yacht offers TV antennas for boats to get high performance, omni-directional connectivity up to 30NM from shore that will provide you with a very good signal for HD TV on board - using just regular terrestrial/over the air signals. Start taking advantage of free HDTV today with the DTV100/200 antennas

Digital Yacht also offer an optional high gain, long range WiFi antenna for the 4GX and 5GX cellular systems. Utilise marina wifi or shore side hotspots up to 5NM from coast for cheap and easy internet access.

DTV100 Marine HD TV Antenna



- Very high performance omni-directional marine TV antenna for boat
- Global reception capability of latest DVB/HDTV signals
- TV and FM radio outlets
- Below deck mounted amplifier with -7dB to +29dB gain control
- Pole or standard 1"x14TPI adaptor mounting capability
- Supplied with 10m (33ft) coax
- Optional dual TV outlet amplifier
- 12v or 24v Operation
- Just 280mm (11") diameter
- Antenna Weight approximately 2lbs (0.9Kg)

Hi Gain Wi-Fi Hotspot Antenna (Requires 4G/5G Xstream)



- Connect the 4G/5GX Xstream to WiFi Hotspots using a dedicated, high gain external antenna
- Operate over the full 2.4 & 5GHz wireless frequency range
- Particularly useful in remote areas where 4G coverage may not be good
- 15dBi antenna
- 10m LMR400 coax cable - connects to 2nd wifi port on 4GX/5GX
- 58cm antenna
- Deck mount and fixings included
- Connector kit with pigtail
- Requires 4GX/5GX system

Antenna Mounting Accessories

Here's just a selection of the wide range of antenna mounting bases and accessories we offer. Our 4G and wireless products use a larger 1.25" base to allow the thicker cables to pass. We supply E179F bases with our 4GX and 4G Connect Pro products but you can also utilise the N280S to adapt the antenna to standard 1" fittings.

The 4720 is a very popular rail mount for GPS antennas (eg with AIS) but can also be used with the N280S for cellular and wifi antennas

Check out the full range of options on our website.

N280S
1"x14TPI to 1.25"
Pipe Thread Adaptor



ZCELE179F
Deck Base



ZCELN275F
Mast/Rail
Mount



ZSHA4187D
Stainless Steel
Ratchet Mount



ZSHA4720
Rail Mount



**7m (23ft), 10m (33ft)
or 20m (66ft)
for 4G antennas**



Building a system with Digital Yacht is easy with these Digital Yacht Solutions ideas. Integrate AIS, sensors, internet connectivity and iPads or tablets for a true wireless navigation and communication solution for your boat. Add a PC with software for below decks, chart table or bridge navigation. DY Solutions make it easy to integrate 3rd party products too. Digital Yacht can help build AIS Solutions where we can offer Class B transponders for multiple applications from jetski and tender tracking right through to iPad and tablet based navigation with our AIT5000. PC Solutions provide a powerful yet value based big screen navigation solution integrating our AIS and sensor products with Aqua Compact Pro and our Navionics based SmarterTrack software or with Timezero Navigator. iSeaSense is the systems approach for our range of instrumentation sensors which now includes GPS, depth, speed, wind and compass.

GPS ANTENNA SUPPLIED

WIRELESS FOR TABLETS AND IPADS

USB CONNECTIVITY FOR PC AND MAC

NMEA 0183/2000 Converter

FM RADIO ANT OUT

AIS LIFEGUARD SART ALARM (OPTION)

The AIT5000 "Nucleus" Class B+ 5W AIS incorporates not only a full function Class B+ AIS transponder but also an antenna splitter allowing the main VHF antenna on the boat to be shared with the AIS and VHF. Its wireless interface transmits AIS, GPS and NMEA 0183 data to all the popular navigation apps and software.

The AIS Life Guard is the world's first Man Overboard AIS alarm designed to work with the AIS SARTs & MOB's. Upon detecting an AIS SART or MOB transmission (message 1 and message 14), the AIS Life Guard will sound its internal 95dB alarm and display a red warning light.

Option: Add iKonvert for the AIT5000's wireless interface to also transmit additional NMEA2000 data

EXISTING VHF ANTENNA

DIGITAL YACHT AIS2500 Class B+

DIGITAL YACHT AIS-VHF SPL2000 AIS-VHF Antenna Splitter

NOW SEE AND BE SEEN

SUPPLIED WITH GPS ANTENNA

NMEA 0183 & USB INTERFACE

NMEA 2000 BACKBONE

NAVLINK2 NMEA 2000 TO WIFI

The AIT2500 is a Class B+ AIS transponder. It uses our latest Class B+ SOTDMA technology. The Icom M510 is an AIS ready VHF which is normally supplied with an internal AIS receiver. Many boaters want AIS transmission capability too and the AIT2500 makes the perfect partner, upgrading the system to a full Class B+ 5W AIS transponder.

This solution also includes the patented ZeroLoss SPL2000 VHF-AIS antenna splitter – allowing the main VHF antenna to be shared with the VHF and with the AIT2500. You don't need to install a 2nd VHF antenna which saves time and cost while preserving excellent performance thanks to the ZeroLoss technology.

Option: Add NavLink2 to wirelessly transmit additional NMEA 2000 data

The diagram illustrates the system components and their connections. On the left, a black GPS antenna is connected to a grey Furuno AIS Transponder. The transponder's screen displays 'FURU AIS TRACK', 'Nucleus', 'AIT5000 Class B AIS Transponder', and '270'. It also features several status icons at the bottom. A cable connects the transponder to a black NMEA0183/2000 converter. This converter is then connected to a tablet. The tablet screen shows a map with a green boat icon, representing the 'TZ IBOAT iPad App'. A Furuno AIS Transponder is also shown separately with its own antenna.

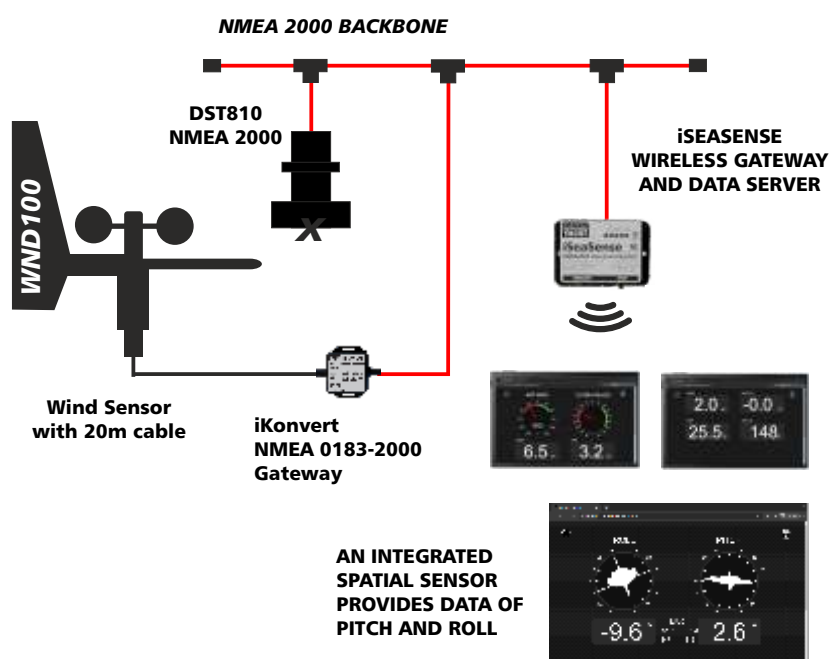
Add AIS, GPS and Radar to your iPad wireless navigation solution with the AIT5000 Class B+ AIS transponder and Furuno DRS4W 24NM radar.

The Furuno DRS4W radar is a wireless radar designed for operation with an iPad. No extra wiring is required other than a power source as data is sent wirelessly to the iOS devices (up to 2 can connect) so installation is particularly easy. The radar app is available as a free download from the app store but most users will utilise the Timezero iBoat charting app so that AIS and GPS data can be wirelessly combined with the radar video image and accessed by the TZ iBoat app.

Option: Add an iKonvert for the AIT5000's wireless interface to also transmit other NMEA2000 data

Digital Yacht Solutions

iSeaSense – Wireless Depth Speed Temp & Wind Pack



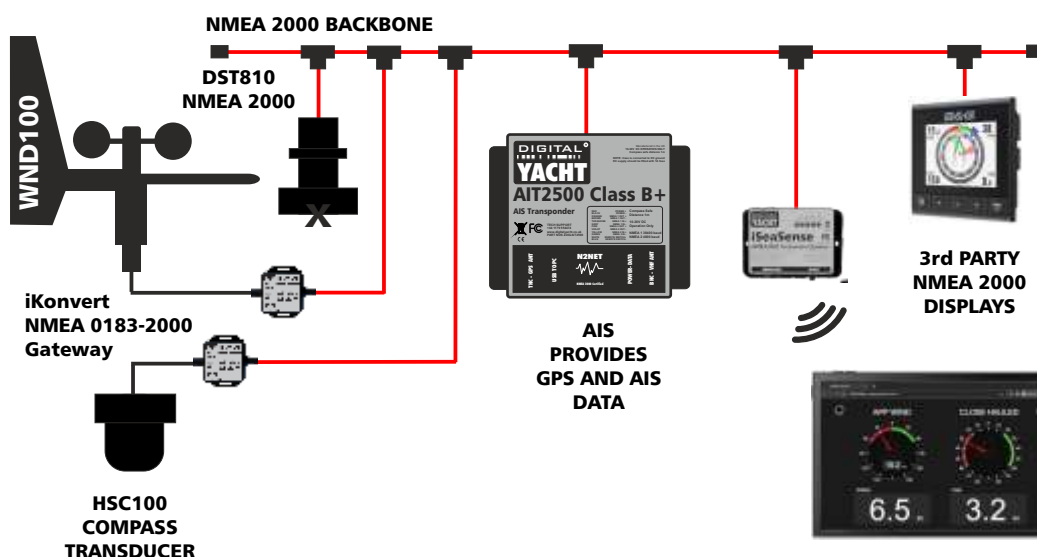
Digital Yacht iSeaSense is a new range of complete marine instrumentation packs based on NMEA 2000 and wireless connectivity – allowing for maximum flexibility and connectivity. Choose from using phones, iPads and tablets for boat data displays as well as 3rd party industry standard instruments and multi function displays.

Top quality and highly accurate sensors are used for boat depth, speed, temp, wind, compass and GPS data. Data can be shared with other devices on the NMEA 2000 network too.

iSeaSense is easy to specify. Available as two main starter packs, everything is included for an easy install and ordering. No app is needed either as the iSeaSense wireless server creates powerful graphical and numeric display pages that can be viewed via a browser on any device.

With Pack 1, depth, speed and temperature data is included with the DST sensor. A spatial sensor is also embedded for detecting pitch and roll which can be used for sophisticated speed calibration. Pack 2 also includes a wind sensor with 20m cable and a interface to "T" directly to the NMEA 2000 backbone providing wind information to the system.

Advanced iSeaSense pack with AIS, GPS and Instrumentation



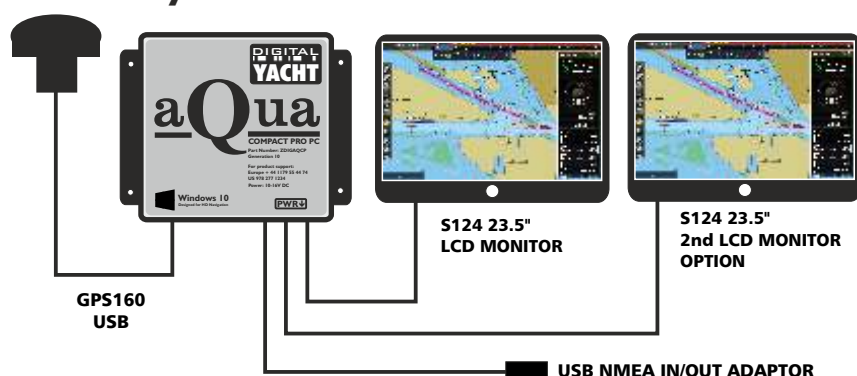
A sophisticated system with a Class B+ 5W SOTDMA AIS transponder integrated to provide AIS and GPS data as well as instrumentation.

This system is expandable using a NMEA2000 backbone and it includes the iSeaSense Wi-Fi interface. It is an easy to fit NMEA 2000 to WiFi server. It features an easy-to-use web interface. No apps are required. Simply open the browser on a connected device, navigate to iSeaSense.local and the optimised touch screen display is ready.

This Advanced iSeaSense pack has all you need for a sophisticated marine instrumentation system on board. It has instruments, including compass, speed, depth and wind, AIS and NMEA 2000 networking and interconnect cables. Add an iKonvert USB interface to the system and use an Aqua PC at the chart table or nav station for additional functionality.

Digital Yacht Solutions

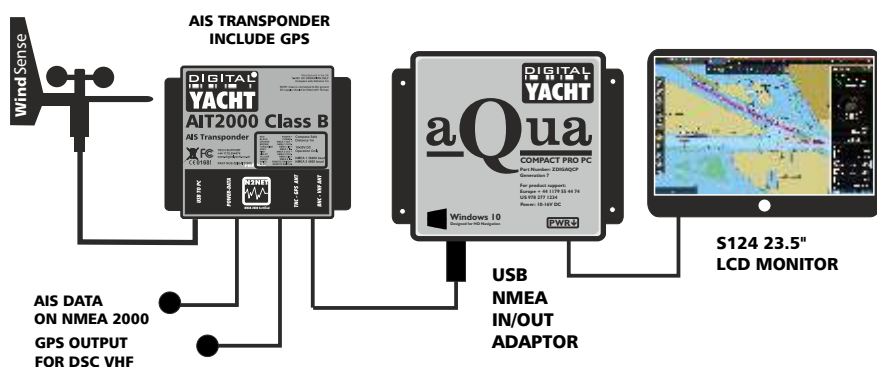
PC Nav System with TriNav GPS



Digital Yacht's latest Aqua Compact Pro PC brings affordable and reliable PC based navigation to boats. With low power, DC operation, it boasts the latest Intel 10th generation technology - built in wifi and bluetooth and a solid state hard drive with 8GB RAM.

TimeZero navigation software utilising C-Map, Navionics or MapMedia charting can be preloaded for a sophisticated yet simple to use chart plotter system with 23.5" display (17" option also available). The GPS160 TriNav sensor provides GPS, GALILEO & GLONAS positioning inputs with typical sub 1m accuracy. Additional NMEA devices can connect via the USB NMEA adaptor.

PC Nav System with GPS, Wind & AIS Class B Transponder

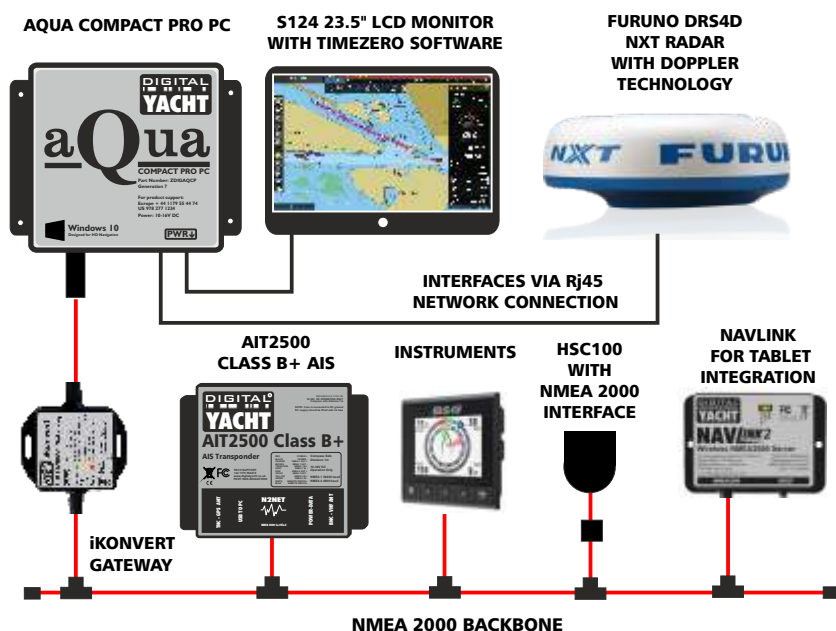


This system builds on the basic package and includes AIS (Class B transponder) plus a WND100 wind transducer integrated for wind speed and direction information.

TimeZero software offers an advanced AIS display with colour coded targets and alarms for CPA and TCPA plus instrument displays too.

The AIT2000 allows interfacing to traditional chart plotters with a NMEA 0183 and NMEA 2000 interface. There is also a GPS NMEA output for DSC VHF's. GPS positioning data comes from the AIS transponder. Second monitor option also available.

PC Nav System with Radar, NMEA2000 & Timezero



This system integrates the Aqua PC with a Furuno DRS4D NXT Radar with doppler technology, Timezero Navigator software with Radar module and a NMEA 2000 network using Digital Yacht's iKonvert USB gateway. AIS, GPS and instrument NMEA 2000 data is made available with a bi-directional interface to the PC software application.

This is a popular option - it allows a small waterproof plotter to be mounted in the cockpit or flybridge and a full function PC system below deck. NavLink provides a wireless feed of NMEA 2000 data to independent iPads or tablets. TZ Software supports cloud syncing of waypoints, route and user data so the iPad app can share data with TZ on the PC too.

The AIT2500 utilises the latest Class B+ transponder technology.

Digital Yacht Solutions

4G/5G Router, Wi-Fi Extender, StarLink integration and Remote Monitoring Solution



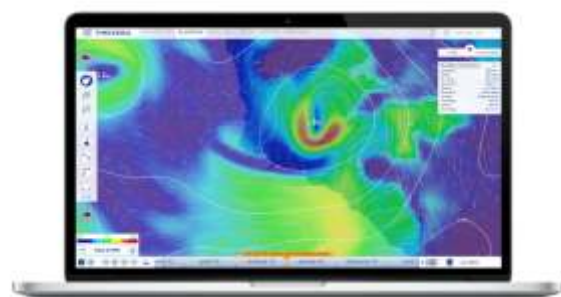
With this solution, you will obtain a fast internet access up to 25 NM via 4G and WiFi hotspot and you will receive all your navigation data under the same WiFi network. With internet connectivity on board you can download the latest weather or chart updates as well as having a mobile office on board. As well, you will receive all your navigation data in the same network to display and use in real time your navigation data on navigation apps & software.

4G Xstream is our latest, premium LTE (cellular) internet access on board product with a NMEA 2000 interface. With a CAT 6 modem, it offers fast connectivity at up to 300 MBs (network dependent). It has a built in dual band wifi router supporting multiple connections as well as dual SIM slots (with auto fail over if required). Also available as 5G Xstream with CAT 20 modem (up to 3.1GBs).

4G Xstream also has an NMEA 2000 interface so that NMEA 2000 navigation data can be made available for apps on smartphones, tablets, iPads and PCs.

This allows all NMEA 2000 data as well as internet data to be sent to popular iOS and Android apps and navigation software such as Navionics, iSailor, AquaMap, iNavX, TimeZero, OpenCPN and more.

4G Xstream has an easy to use interface and is unlocked so users are free to fit a data SIM card from any mobile provider they choose. The 4GXstream has two standard SIM slots so it is possible to fit two SIMs from two different network operators.



NavAlert allows an alarm to be set for any parameter that's available on the boat's NMEA 2000 network. That could be navigation data such as depth, heading or speed, electrical data such as voltage and engine/generator data including temperature, pressure, tank levels, fuel flow etc. Integrated into NavAlert is a custom alarm for anchor drift and there's also an anti collision alarm.

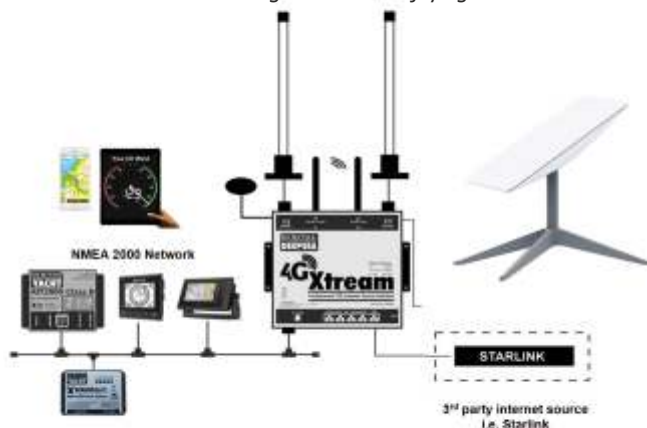
When connected to a 4G Xstream (which features a NMEA 2000 interface), alerts can also be sent via SMS to a remote phone. Simply select alert by SMS as an option on the NavAlert alarm set up menu and the integrated solution can be used for easy remote monitoring.

Geofence your boat at anchor or set an alert for high wind speed etc. Great for feeling secure that the anchor is holding well when enjoying a lunch ashore

The 4G Xstream is also available as 5G (5G Xstream) and comes with a 3rd antenna. The 4G/5G Xstream has an Ethernet port which is optimised for Starlink satellite connectivity allowing the 4G/5G Xstream to act as a sophisticated and fast router for all on board internet communications.

Replacing the Starlink router with Digital Yacht's 4G/5GXstream, to create a Starlink + Digital Yacht "hybrid" system, results in an extremely powerful IT solution that can be easily configured and controlled via Digital Yacht's web interface.

You'll benefit from a more powerful and functional network, with mobile Internet backup to guarantee you an Internet connection in all circumstances, plus all your NMEA navigation data.



Digital Deep Sea Commercial Products

CLA2000 Class A AIS Transponder for Mandatory AIS Commercial Solutions

The CLA2000 AIS Class A sets new standards of performance, functionality and reliability. As a single, fully integrated Class A transceiver, the CLA2000 is easily installed and configured with dual NMEA2000 and NMEA0183 connectivity allowing plug & play integration with other bridge systems. The hi-resolution full colour display delivers a range of powerful functionality, including full CMAP ENC charting, multiple text and graphic display modes, AIS target management, proximity alerts, MOB/SAR alert and tracking and much more. The unit is engineered and built for commercial users who rely on their AIS Class A day after day for their safety, security and operational efficiency. The waterproof display is ideal for RIB and work boat mounting at the helm.

AIS SART and AIS LifeGuard - the AIS man over board alarm for use with popular AIS PLBs

Digital Yacht has launched a potentially life-saving product called AIS LifeGuard. Each crew member needs to be carrying a personal AIS device – like the ones made by companies such as Ocean Signal, Easy, Kannad and McMurdo. Just connect the AIS LifeGuard to an on board AIS transponder or AIS receiver and you have a fully operational AIS SART man overboard system. The AIS Life Guard detects both message 1 and message 14 (these are reserved for AIS SART messaging). As soon as an AIS SART transmission is detected the AIS Life Guard will sound an internal 95db alarm and also display a red warning light. So within seconds the helmsman will be aware if a member of the crew or passenger has fallen overboard.

The AIS Life Guard is compatible with all Digital Yacht receivers and transponders and the new generation of AIS SARTS that have recently been approved for global use by the IMO.

The S1000 is an approved IMO AIS SART, suitable for vessel and liferaft deployment. It forms a vital part of mandated on board safety equipment for commercial users and leisure offshore boaters.

PilotLink2 Pilot Plug Wireless Interface



- Wireless Interface for Class A AIS Transponders
- Reads GPS and AIS data directly from the transponders Pilot Plug
- Connects to any standard "Pilot Plug" connector
- USB powered for easy portability – power from any USB source, adaptor or power pack
- Easy web interface with useful diagnostics display and Class A static, dynamic and voyage data displays
- TCP/IP and UDP protocols supported

CLA2000 Class A AIS Transponder



- Globally approved Class A AIS transponder
- High resolution, 800 x 480 pixel 5" colour display (MKD) with easy to use, fast user interface
- Integrated GPS with external antenna or utilise external NMEA feed
- 3 x NMEA 0183 interface (bi-directional for plotter, ECDIS, radar etc)
- 3 x sensor input ports (eg BlueBoard, external GNSS, gyro etc)
- NMEA 2000 interface
- Built in SD card slot
- Built in wi-fi for connection to iPads and tablets for wireless navigation

S1000 AIS SART & LifeGuard



- Full IMO Compliant, Wheel Marked AIS SART
- 50 channel GPS receiver built in
- Specialist VHF antenna technology for superior performance
- LED indications for test and activation
- When activated transmits position 8 times per minute
- Sends SART ACTIVE safety message every 4 minutes

Class A Pilot Plug USB Interface Cable



- Allows connection of a PC to a Class A Transponder to receive NMEA0183 AIS and GPS data via a USB port.
- 1.8m Cable
- Fully NMEA 0183 compatible (differential RS422)
- Conforms to the IMO SN/Circ.227
- Bidirectional data connection
- Built-in indicator lights flash to show data is being received and transmitted

OUR IDEAS FOR YOU



SAIL BOAT



MOTOR BOAT



SUPERYACHT



WORK BOAT



SPORT FISHING



COMMERCIAL
FISHING

Follow our daily newsfeed at www.digitalyacht.net



NEXT GENERATION MARINE ELECTRONICS

Find us at:

Digital Yacht

TEL +44 117 955 4474

Email: sales@digitalyacht.co.uk

www.digitalyacht.co.uk

Digital Yacht North America

TEL +1 978 277 1234

Email: sales@digitalyachtamerica.com

www.digitalyachtamerica.com

www.digitalyacht.ca

Digital Yacht Europe

TEL +44 1 223 967 210

Email: sales@digitalyacht.eu.com

www.digitalyacht.eu.com

Digital Yacht Australia

TEL +61 300 747 587

www.digitalyacht.com.au

Follow us:



Digital Yacht



@DigitalYacht



Digital Yacht



[digitalyacht](https://www.instagram.com/digitalyacht)

Designed and manufactured in

