

Sonar Server



Build Better Charts with Sonar Server & Navionics Sonar Charts Live

Woops!
It wasn't on the chart



Running aground is every skipper's nightmare. We rely on our depth sounder and also the soundings shown on charts for navigation but with many surveys carried out in the distant past, isn't it time for better charts?

Sonar Server is Digital Yacht's low cost wireless gateway from your boat's NMEA depth instrument or fish-finder to a Smartphone or tablet running the popular Navionics' charting app. The app now features the ability to redraw bathymetry based on live data streamed from your boat's system.

"Sonar Server and the Navionics' charting app with Sonar Charts Live brings a new dimension to bathymetry"

How it works...



Before: This shows the dredged channel into the popular Parkstone Bay Yacht Club. The traditional charts just show it as a channel with no depth information

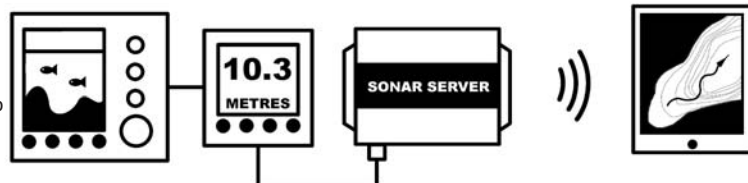
You sail: With Sonar Server installed we passed over the channel and you can see our track as the red line. In real time the charting is redrawn on the screen of the iPad/tablet allowing us to reveal hidden depth contours

After: When we return ashore and the SmartPhone or tablet has an internet connection, data is anonymously uploaded to the Navionics' server for reprocessing. A sophisticated algorithm compares and validates data and allows a new "Sonar Chart" to be created which is then available for all to download next time they update charts within the app. This process typically takes a couple of weeks. The new data clearly shows some areas on the starboard side of the channel which may cause concern. It's community boating at its best!

SonarCharts Live is the latest advance in SonarCharts technology allowing users to view sonar recordings in an exciting real-time display on the Navionics' app. The newly generated personal HD chart is then saved for private use on the device, while recorded depth data is anonymously shared with Navionics to improve SonarCharts for all boaters. All data is cross-checked with other community contributions to ensure accurate daily enhancements. SonarChart Live is truly fascinating to watch - as you move, you'll see the map expose the underwater surface and the contour details revealed. Sonar Server from Digital Yacht acts as a wireless gateway from on board electronics to the mobile device - sharing boat depth data with the app. In addition to depth information being transmitted, GPS data can also be sent allowing, for the first time, the Navionics app to utilise boat data for positioning on the chart as well as depth recording. This allows devices without a GPS, such as a "Wi-Fi Only" iPad or even an iPod Touch to utilise the charting app for real time navigation.

Simple Installation

Sonar Server connects to the boat's NMEA 0183 system using a simple 2 wire connection. It creates a wireless network on board that can typically footprint a boat up to about 25m in length. No internet connection is required on board. The Navionics' Boating app is available for iOS and Android



Find our more and order online at www.sonarserver.com